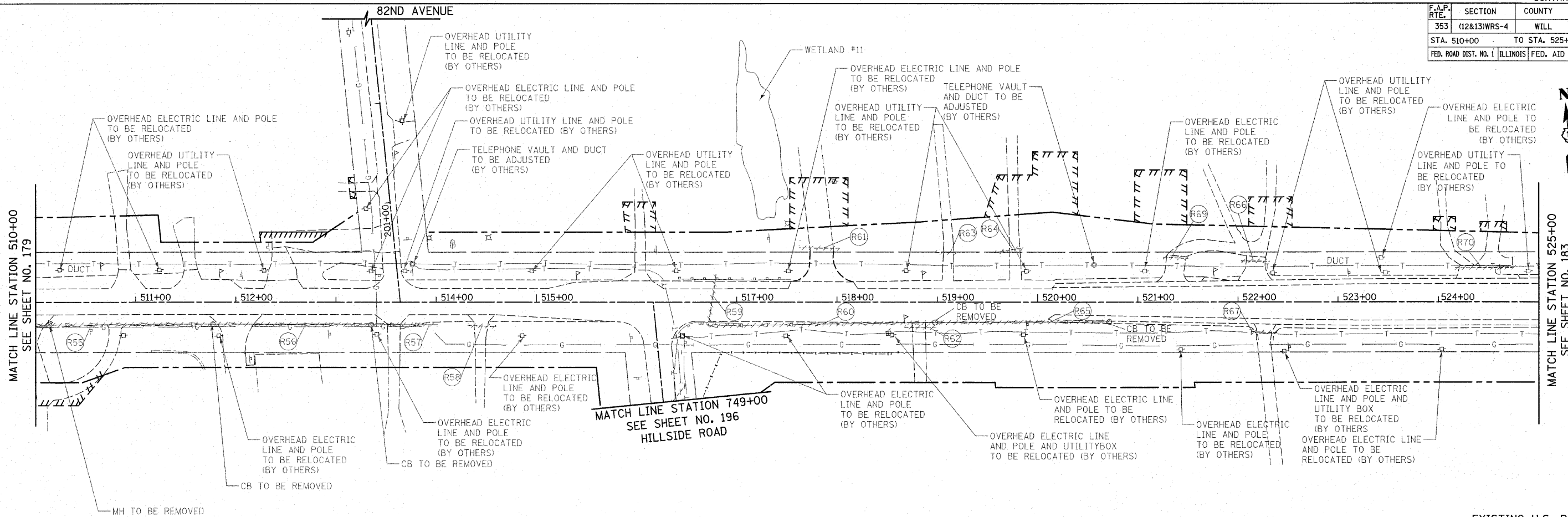
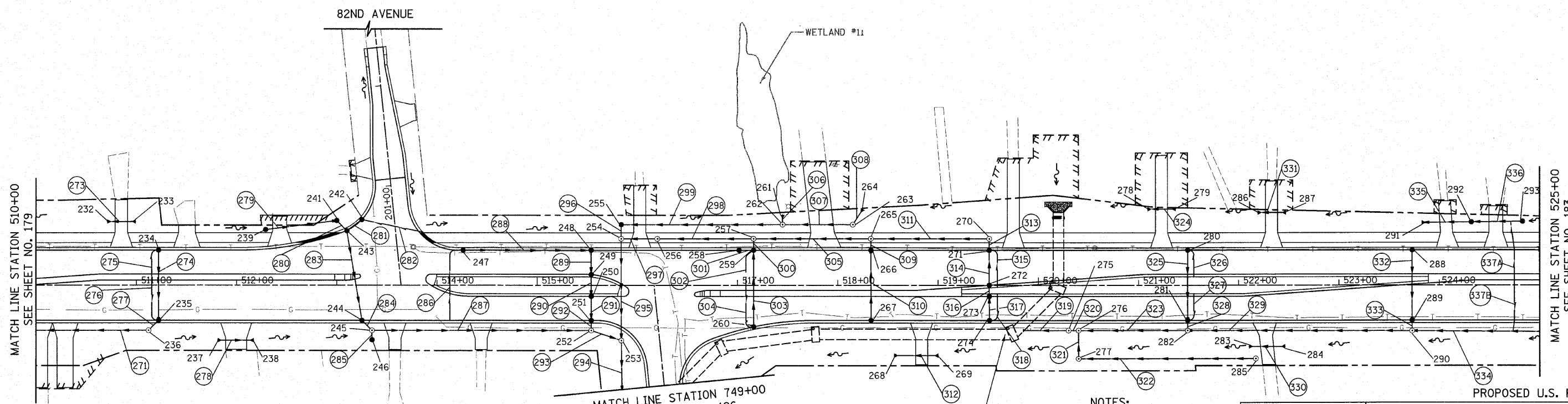


F.A.P. RTE.	SECTION	COUNTY	TOTAL SHEETS	SHEET NO.
353	(12&13)WRS-4	WILL	608	181
STA. 510+00		TO STA. 525+00		
FED. ROAD DIST. NO. 1 ILLINOIS FED. AID PROJECT				



EXISTING U.S. ROUTE 30



PROPOSED U.S. ROUTE 30

**NOTES:**

- SEE SHEET NO. 207 FOR CORRESPONDING PROFILE
- SEE SHEET NO. 463-475 FOR BOX CULVERT PLANS

REVISIONS	
NAME	DATE

ILLINOIS DEPARTMENT OF TRANSPORTATION  
**U.S. ROUTE 30  
 DRAINAGE AND UTILITY PLANS**  
 STATION 510+00 TO STATION 525+00

50 0 50  
 SCALE IN FEET

DATE 6/11/2010

DRAWN BY DJK  
 CHECKED BY JRV

9' X 5' BOX CULVERT