

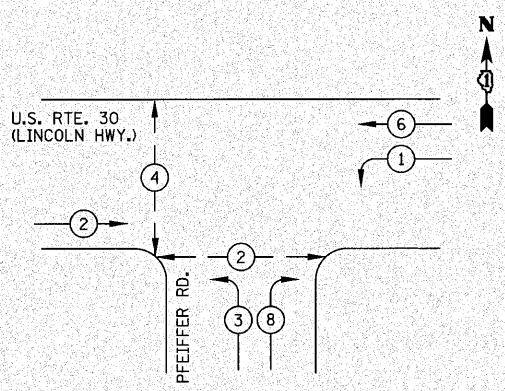
F.A.P. RTE.	SECTION	COUNTY	TOTAL SHEETS	SHEET NO.
353	(12&13)WRS-4	WILL/COOK	608	373
STA.		TO STA.		
FED. ROAD DIST. NO. 1 ILLINOIS FED. AID PROJECT				
CONTRACT NO. 62478				

### SCHEDULE OF QUANTITIES

PAY ITEM	UNIT	QUANTITY
SIGN PANEL - TYPE 1	SQ FT	15
SIGN PANEL - TYPE 2	SQ FT	15
CONDUIT IN TRENCH, 2" DIA., GALVANIZED STEEL	FOOT	650
CONDUIT IN TRENCH, 3" DIA., GALVANIZED STEEL	FOOT	129
CONDUIT IN TRENCH, 4" DIA., GALVANIZED STEEL	FOOT	38
CONDUIT PUSHED, 2" DIA., GALVANIZED STEEL	FOOT	100
CONDUIT PUSHED, 2 1/2" DIA., GALVANIZED STEEL	FOOT	26
CONDUIT PUSHED, 3" DIA., GALVANIZED STEEL	FOOT	20
CONDUIT PUSHED, 4" DIA., GALVANIZED STEEL	FOOT	216
HANDHOLE	EACH	4
HEAVY-DUTY HANDHOLE	EACH	2
DOUBLE HANDHOLE	EACH	1
TRENCH AND BACKFILL FOR ELECTRICAL WORK	FOOT	710
FULL-ACTUATED CONTROLLER AND TYPE IV CABINET, SPECIAL	EACH	1
TRANSCIEVER-FIBER OPTIC	EACH	1
ELECTRIC CABLE IN CONDUIT, SIGNAL NO. 14 2C	FOOT	436
ELECTRIC CABLE IN CONDUIT, SIGNAL NO. 14 3C	FOOT	985
ELECTRIC CABLE IN CONDUIT, SIGNAL NO. 14 5C	FOOT	1987
ELECTRIC CABLE IN CONDUIT, SIGNAL NO. 14 7C	FOOT	308
ELECTRIC CABLE IN CONDUIT, LEAD-IN, NO. 14 1 PAIR	FOOT	2002
ELECTRIC CABLE IN CONDUIT, SERVICE NO. 6 2C	FOOT	25
TRAFFIC SIGNAL POST, GALVANIZED STEEL 10 FT.	EACH	2
TRAFFIC SIGNAL POST, GALVANIZED STEEL 16 FT.	EACH	1
STEEL MAST ARM ASSEMBLY AND POLE, 32 FT.	EACH	1
STEEL MAST ARM ASSEMBLY AND POLE, 36 FT.	EACH	1
STEEL MAST ARM ASSEMBLY AND POLE, 48 FT.	EACH	1
CONCRETE FOUNDATION, TYPE A	FOOT	12
CONCRETE FOUNDATION, TYPE C	FOOT	4
CONCRETE FOUNDATION, TYPE E 30-INCH DIAMETER	FOOT	30
CONCRETE FOUNDATION, TYPE E 36-INCH DIAMETER	FOOT	15
SIGNAL HEAD, L.E.D., 1-FACE, 3-SECTION, MAST ARM MOUNTED	EACH	6
SIGNAL HEAD, L.E.D., 1-FACE, 3-SECTION, BRACKET MOUNTED	EACH	2
SIGNAL HEAD, L.E.D., 1-FACE, 5-SECTION, MAST ARM MOUNTED	EACH	1
SIGNAL HEAD, L.E.D., 2-FACE, 1-3 SECTION, 1-5 SECTION, BRACKET MOUNTED	EACH	1
PEDESTRIAN SIGNAL HEAD, L.E.D., 1-FACE, BRACKET MOUNTED WITH COUNTDOWN TIMER	EACH	4
TRAFFIC SIGNAL BACKPLATE, LOURVERED, ALUMINUM	EACH	7
INDUCTIVE LOOP DETECTOR	EACH	7
* LIGHT DETECTOR	EACH	2
* LIGHT DETECTOR AMPLIFIER	EACH	1
PEDESTRIAN PUSH-BUTTON	EACH	4
TEMPORARY TRAFFIC SIGNAL INSTALLATION	EACH	1
REMOVE EXISTING TRAFFIC SIGNAL EQUIPMENT	EACH	1
REMOVE EXISTING HANDHOLE	EACH	7
REMOVE EXISTING CONCRETE FOUNDATION	EACH	5
PREFORMED DETECTOR LOOP	FOOT	583
TEMPORARY TRAFFIC SIGNAL TIMINGS	EACH	1
SERVICE INSTALLATION-POLE MOUNTED	EACH	1
UNINTERRUPTIBLE POWER SUPPLY	EACH	1
ELECTRIC CABLE IN CONDUIT, GROUNDING, NO. 6 1C	FOOT	577
* ELECTRIC CABLE IN CONDUIT, NO. 20 3C, TWISTED, SHIELDED	FOOT	521

\* 100% COST TO FRANKFORT FIRE PROTECTION DISTRICT

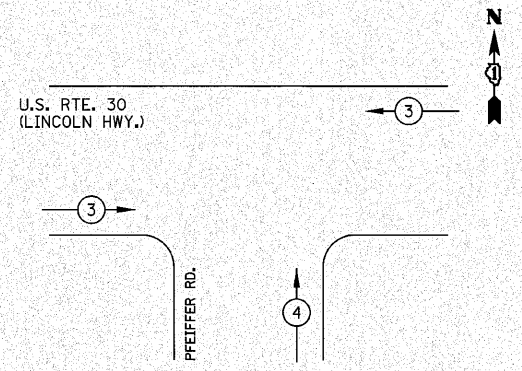
### PROPOSED CONTROLLER SEQUENCE



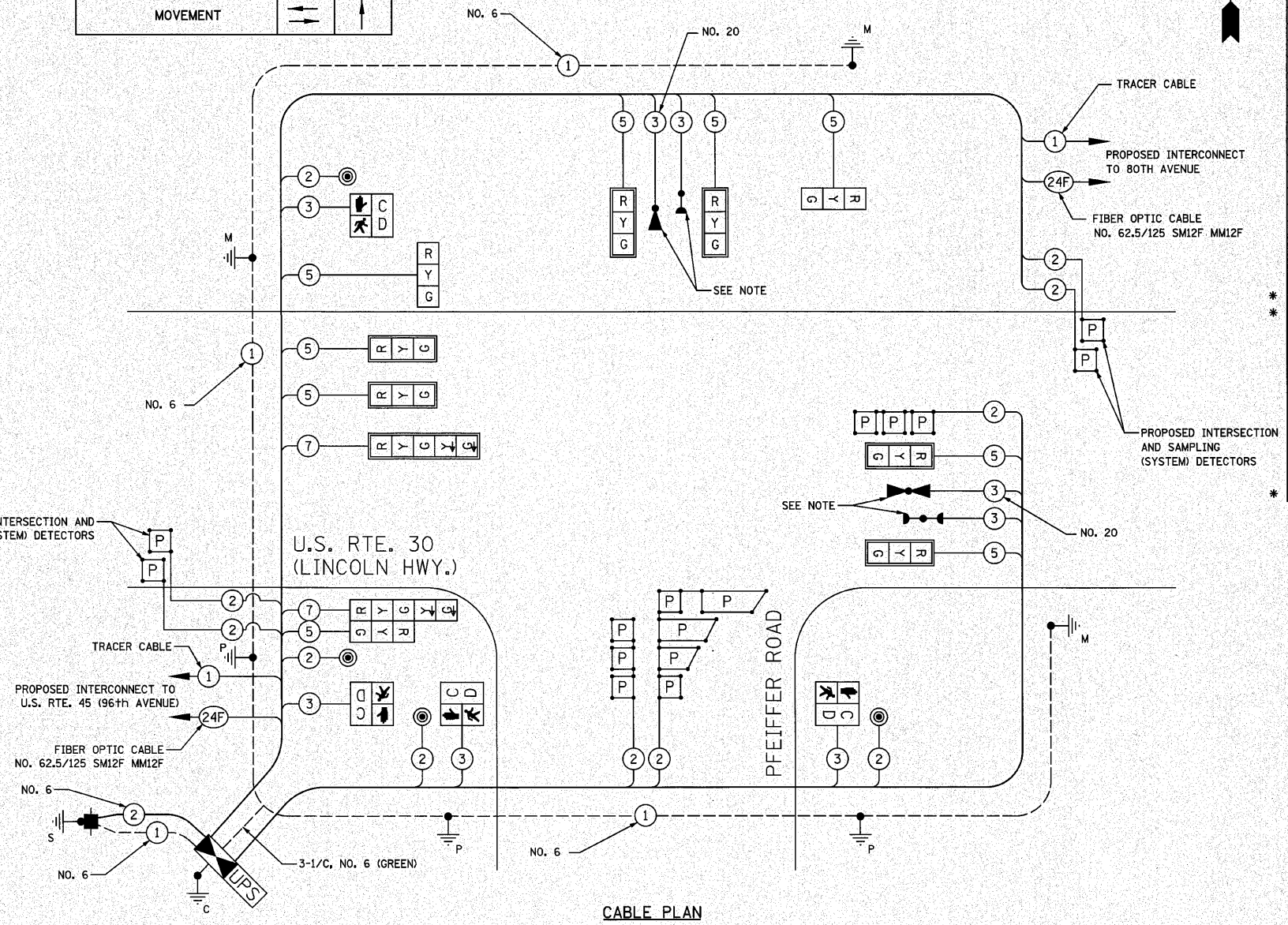
- LEGEND**
- ⊙ DUAL ENTRY PHASE
  - ⊙ SINGLE ENTRY PHASE
  - ⊙ OL OVERLAP
  - ⊙ PEDESTRIAN PHASE
  - \* NUMBER REFERS TO ASSOCIATED PHASE

### PROPOSED PHASE DESIGNATION DIAGRAM

### PROPOSED EMERGENCY VEHICLE PREEMPTION SEQUENCE



PROPOSED EMERGENCY VEHICLE PREEMPTORS		
EMERGENCY VEHICLE PREEMPTOR	3	4
MOVEMENT	←	↑



**CABLE PLAN**  
NOT TO SCALE

THE END OF THE TRACER CABLE SHALL BE CONTINUOUS AND EXTEND INTO THE CONTROLLER CABINET.

I.D.O.T. TRAFFIC SIGNAL INSTALLATION ELECTRICAL SERVICE REQUIREMENTS				TOTAL WATTAGE
TYPE	NO. LAMPS	WATTAGE INCAND. LED	% OPERATION	
SIGNAL (RED)	10	17	0.50	85
(YELLOW)	10	25	0.25	63
(GREEN)	10	15	0.25	38
ARROW	4	12	0.10	5
PED SIGNAL	4	25	1.00	100
CONTROLLER	1	100	1.00	100
ILLUM. SIGN			0.05	
FLASHER		25	0.50	
TOTAL =				391

ENERGY COSTS TO: ILLINOIS DEPARTMENT OF TRANSPORTATION  
201 W. CENTER CT.  
SCHAUMBURG, IL 60196

ENERGY SUPPLY: CONTACT: MARK ANDERSON  
PHONE: 815-724-5388  
COMPANY: COM.ED.

NOTE:  
THE TRAFFIC SIGNAL CONTROLLER EQUIPMENT FOR THIS PROJECT SHALL BE "ECONOLITE" TO MATCH THE EXISTING ADJACENT SYSTEM.

REVISIONS	
NAME	DATE

ILLINOIS DEPARTMENT OF TRANSPORTATION  
CABLE PLAN,  
PHASE DESIGNATION DIAGRAM,  
EMERGENCY PREEMPTION SEQUENCE AND  
SCHEDULE OF QUANTITIES  
U.S. RTE. 30 (LINCOLN HWY.) &  
PFEIFFER ROAD

NOT TO SCALE  
DATE 6/11/2010

DRAWN BY OJT  
DESIGNED BY BRD  
CHECKED BY JJE