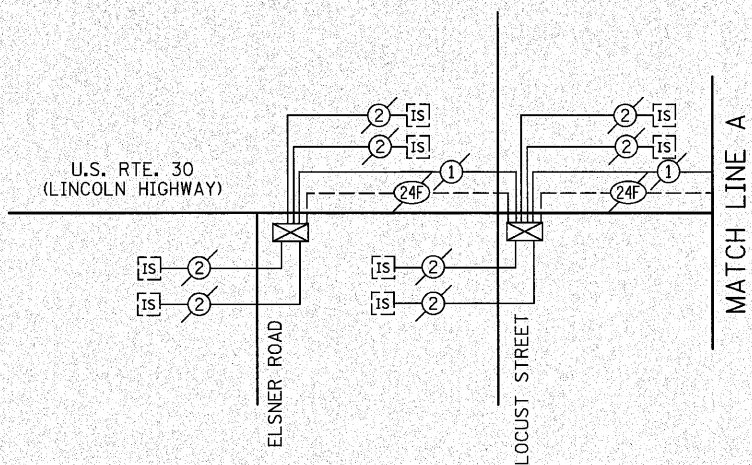
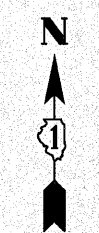
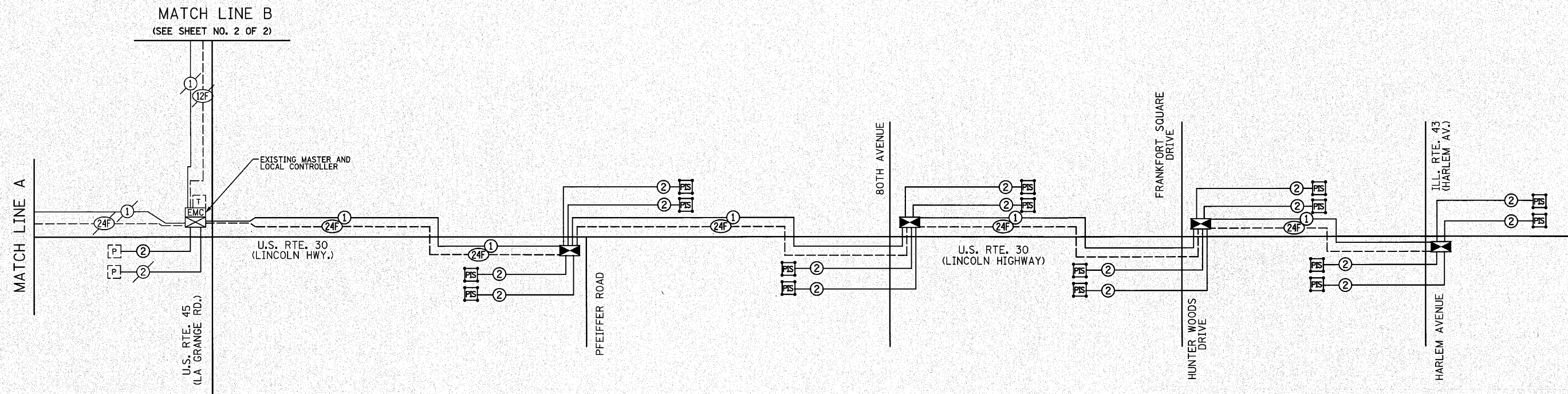


F.A.P. RTE.	SECTION	COUNTY	TOTAL SHEETS	SHEET NO.
353	(12&13)WRS-4	WILL/COOK	608	397
STA.		TO STA.		
FED. ROAD DIST. NO. 1		ILLINOIS FED. AID PROJECT		
CONTRACT NO. 62478				



INTERCONNECT SYSTEM WEST OF U.S. ROUTE 45 TO BE COMPLETED BY OTHERS UNDER IDOT CONTRACT NO. 62479

INTERCONNECT SCHEDULE OF QUANTITIES

PAY ITEM	UNIT	QUANTITY
CONDUIT IN TRENCH, 2" DIA., GALVANIZED STEEL	FOOT	12106
CONDUIT PUSHED, 2" DIA., GALVANIZED STEEL	FOOT	1829
CONDUIT ATTACHED TO STRUCTURE, 2" DIA., GALVANIZED STEEL	FOOT	188
JUNCTION BOX, STAINLESS STEEL, ATTACHED TO STRUCTURE, 16" X 12" X 8"	EACH	2
HANDHOLE	EACH	26
TRENCH AND BACKFILL FOR ELECTRICAL WORK	FOOT	12106
DRILL EXISTING HANDHOLE	EACH	1
ELECTRIC CABLE IN CONDUIT, TRACER NO. 14 1C	FOOT	17538
OPTIMIZE TRAFFIC SIGNAL SYSTEM	EACH	1
RE-OPTIMIZE TRAFFIC SIGNAL SYSTEM-LEVEL II	EACH	1
FIBER OPTIC CABLE IN CONDUIT, NO. 62.5/125 MM12F SM12F	FOOT	17627

NOTE:  
THE TRAFFIC SIGNAL CONTROLLER EQUIPMENT FOR THIS PROJECT SHALL BE "ECONOLITE" TO MATCH THE EXISTING ADJACENT SYSTEM.

REVISIONS	
NAME	DATE

ILLINOIS DEPARTMENT OF TRANSPORTATION  
**TRAFFIC SIGNAL INTERCONNECT SCHEMATIC**  
 (SHEET 1 OF 2)  
 U.S. RTE. 30 (LINCOLN HWY.)  
 MARLEY RD. TO ILL. RTE. 43 (HARLEM AV.)  
 NOT TO SCALE  
 DATE 6/11/2010  
 DRAWN BY OJT  
 DESIGNED BY BRD  
 CHECKED BY JJE