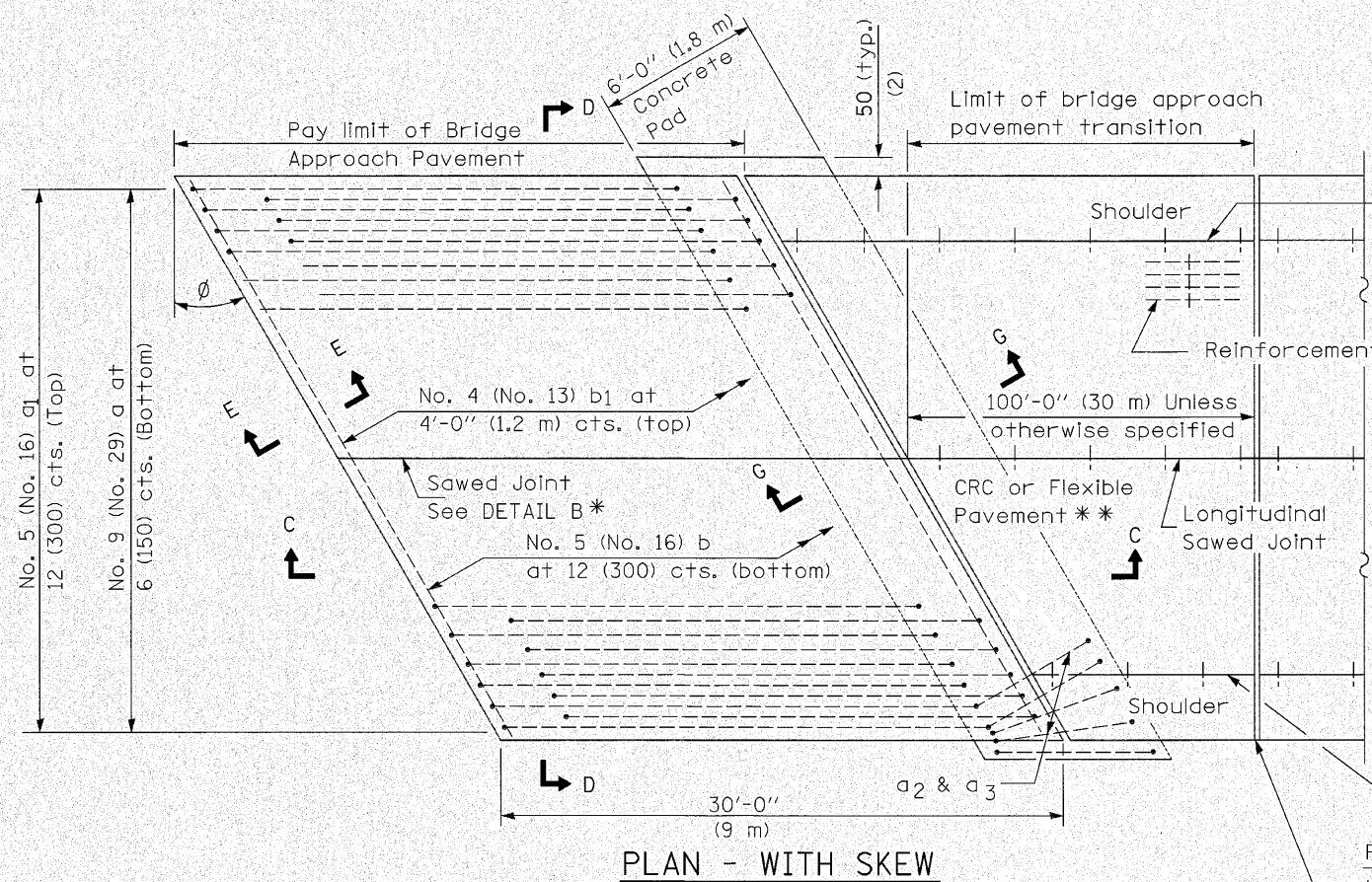


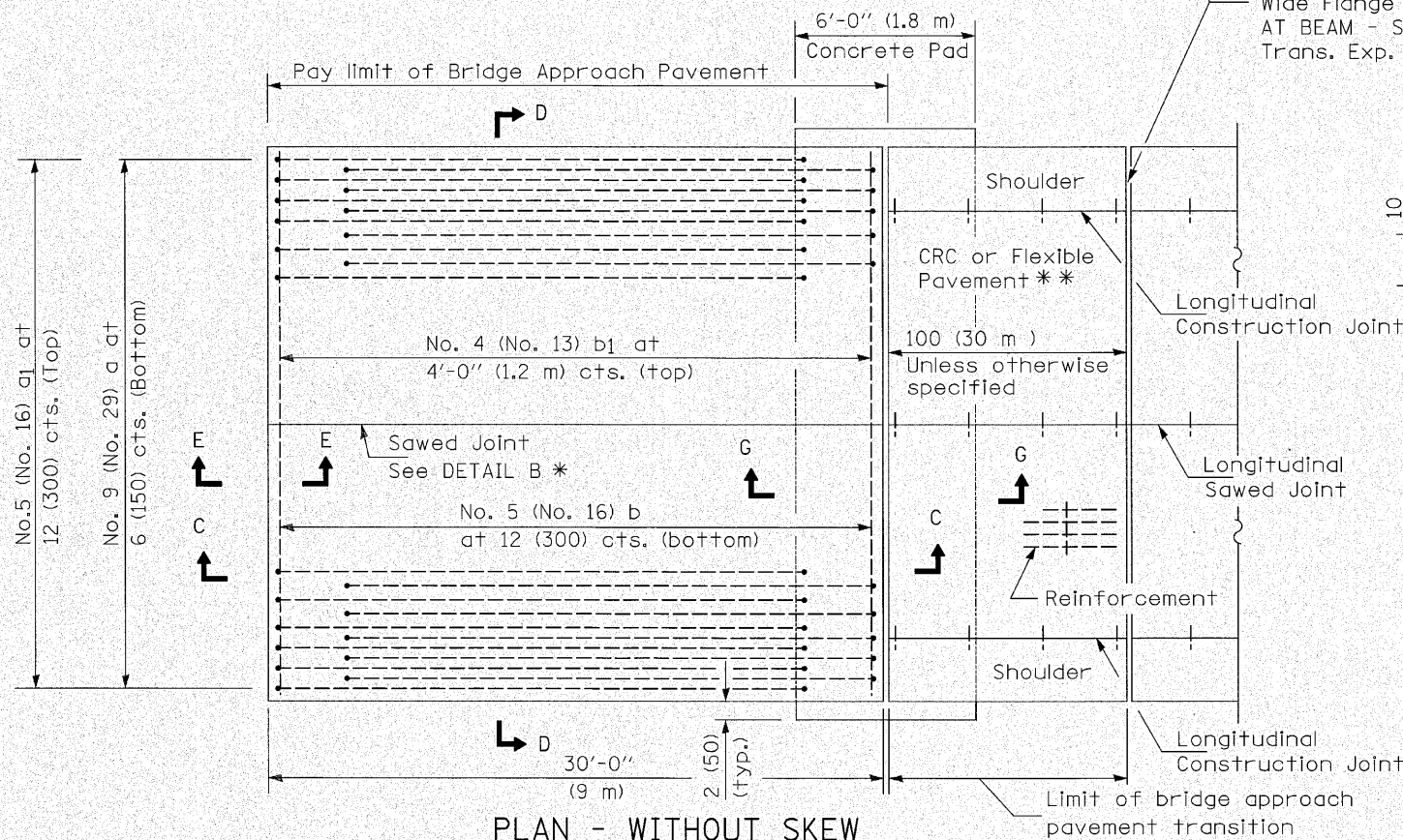
ROUTE NO.	SECTION	COUNTY	TOTAL SHEETS	SHEET NO.
353	(12&13) WRS-4	WILL	608	410
FED. ROAD DIST. NO. 1	ILLINOIS	FED. AID PROJECT-		

Contract No. 62478

NEW CONSTRUCTION

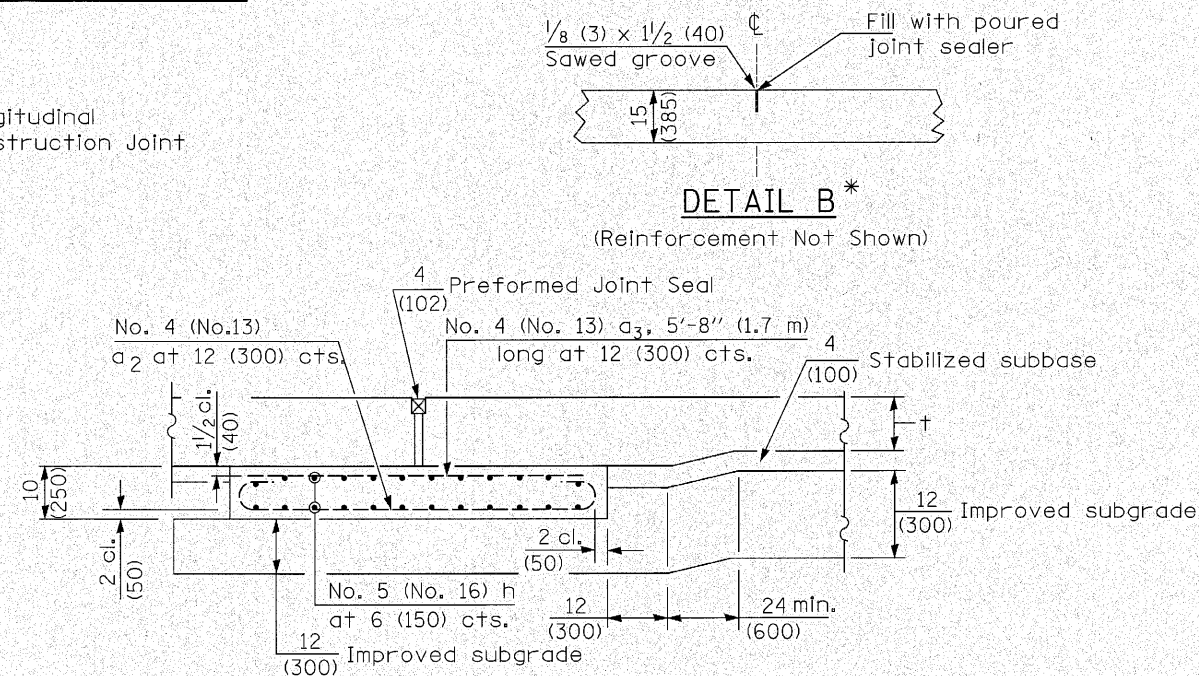


PLAN - WITH SKEW



PLAN - WITHOUT SKEW

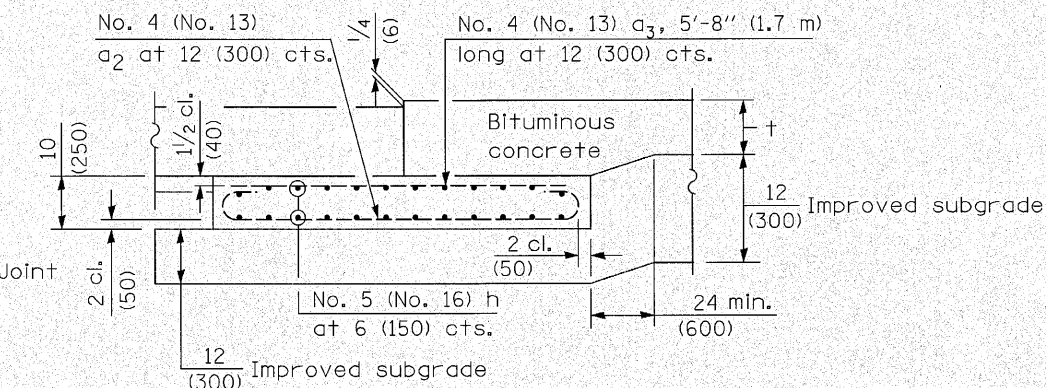
* Saw ϕ or lane edge if poured two or more lane widths at a time.
 ** Omit Reinforcement, tie bars and Long. sawed Jt. for Flexible Pavement.



SECTION G-G - RIGID PAVEMENT
(Showing reinforcement)

Rigid Pavement only:

Wide Flange Beam Terminal Joint (See DETAIL AT BEAM - Standard 421101 or 421106) or 2 (50)
 Trans. Exp. Joint as detailed on Standard 420001.



SECTION G-G - FLEXIBLE PAVEMENT
(Showing reinforcement)

GENERAL NOTES

THICKNESS-"t"=Thickness of Pavement.
 See Standard 421001 for reinforcement details not shown.
 See Standard 420001 for joint details not shown.

AP3 OF AP6

STATE OF ILLINOIS
 DEPARTMENT OF TRANSPORTATION
 BRIDGE APPROACH PAVEMENT
 GENERAL DETAILS 1

U.S. RTE. 30 OVER HICKORY CREEK
 STRUCTURE NUMBER 099-0311

SCALE:
 DATE: June 11, 2010

DRAWN BY: C. Cooney
 CHECKED BY: G. Hatlestad

All dimensions are in inches (millimeters) unless otherwise shown.