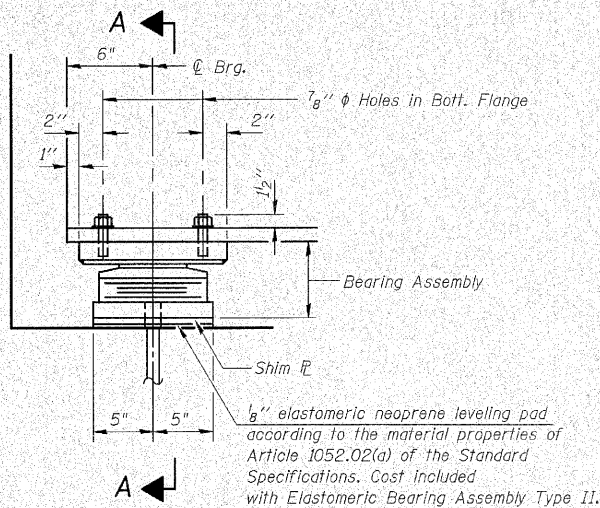


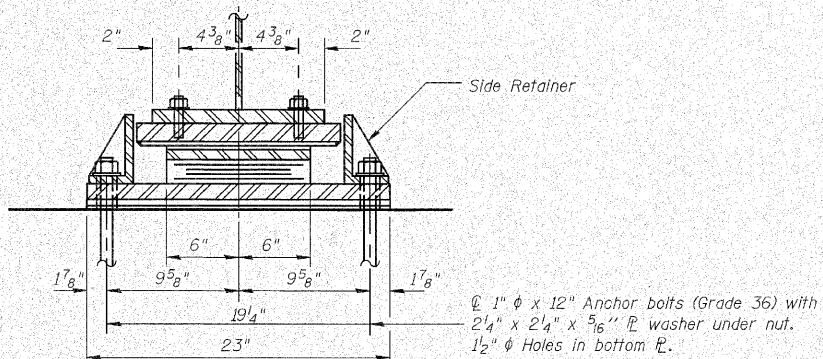
Contract No. 62478



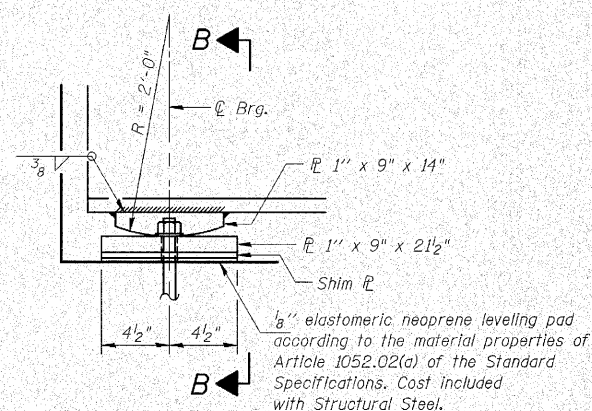
ELEVATION AT EAST ABUT.

TYPE II ELASTOMERIC EXP. BRG.

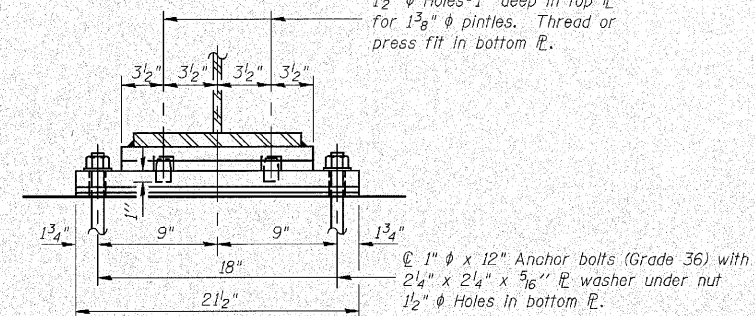
(9 Required)



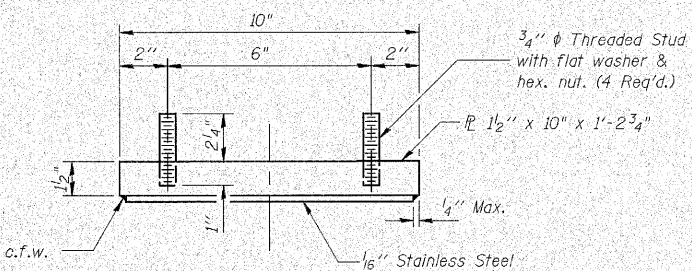
SECTION A-A



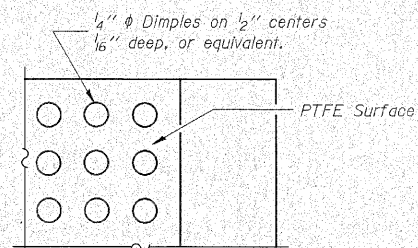
ELEVATION AT WEST ABUT.



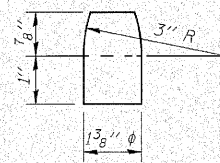
SECTION B-B



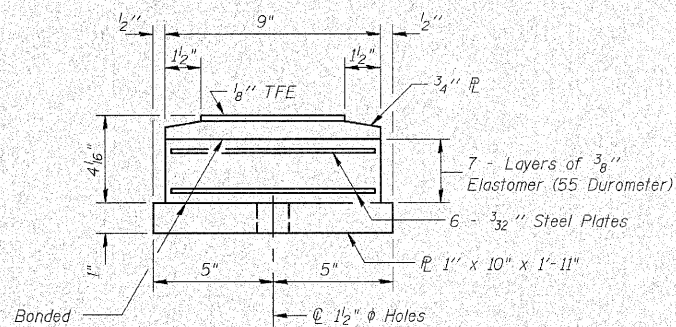
TOP BEARING ASSEMBLY



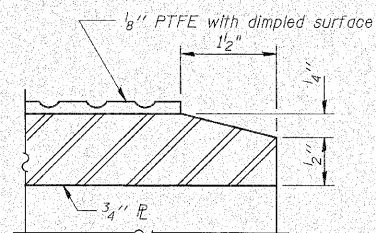
PLAN-PTFE SURFACE



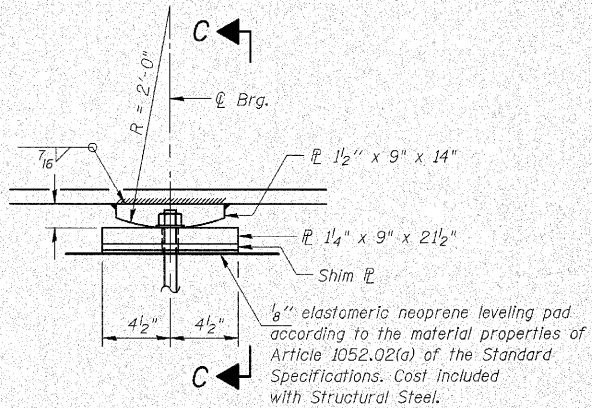
PINTLE



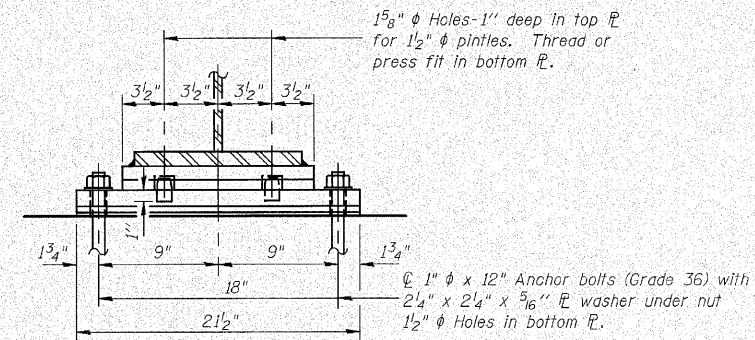
BOTTOM BEARING ASSEMBLY



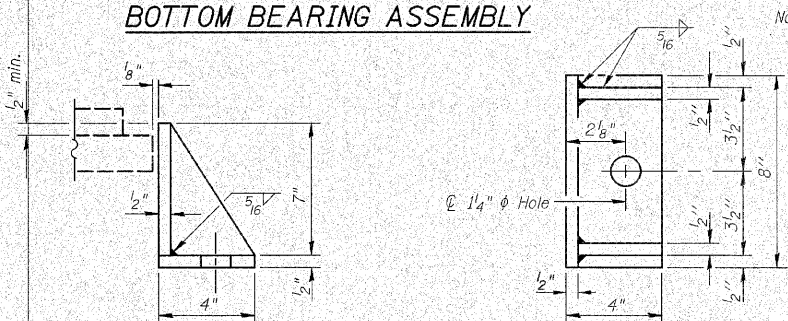
SECTION THRU PTFE



ELEVATION AT PIER



SECTION C-C

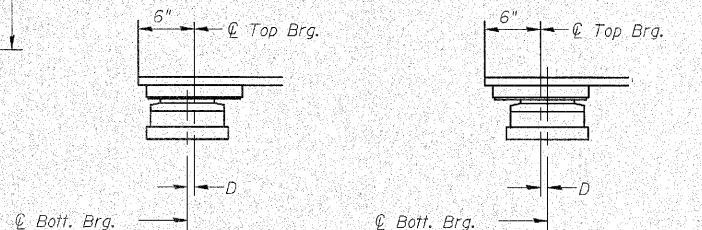


SIDE RETAINER

Equivalent rolled angle with stiffeners will be allowed in lieu of welded plates.

Note: The 1/8" PTFE sheet shall be bonded directly to the top steel plate with a two-component, medium viscosity epoxy resin, conforming to the requirements of the Federal Specification MMM-A-134, Type I. The bond agent shall be applied on the full area of the contact surfaces.

Bonding of 1/8" PTFE sheet during vulcanizing process will be permitted provided the process and method of adjusting assembly height is approved by the Engineer.



BELOW 50°F.

(Move bott. brg. away from fixed brg.)

ABOVE 50°F.

(Move bott. brg. toward fixed brg.)

SETTING ANCHOR BOLTS AT EXP. BRG.

D = 1/8" per each 100' of expansion for every 15° temp. change from the normal temp. of 50°F.

FIXED BEARING AT PIER 1 & 2

(18 Required)

BILL OF MATERIAL

| Item | Unit | Total |
|--------------------------------------|------|-------|
| Elastomeric Bearing Assembly Type II | Each | 9 |
| Anchor Bolts, 1" | Each | 72 |

S14 OF S26

STATE OF ILLINOIS
DEPARTMENT OF TRANSPORTATION
BEARING DETAILS

U.S. RTE. 30 OVER HICKORY CREEK
STATION 493+89.73
STRUCTURE NUMBER 099-0311

SCALE: None
DATE: June 11, 2010

DRAWN BY: C. Cooney
CHECKED BY: G. Hallestad