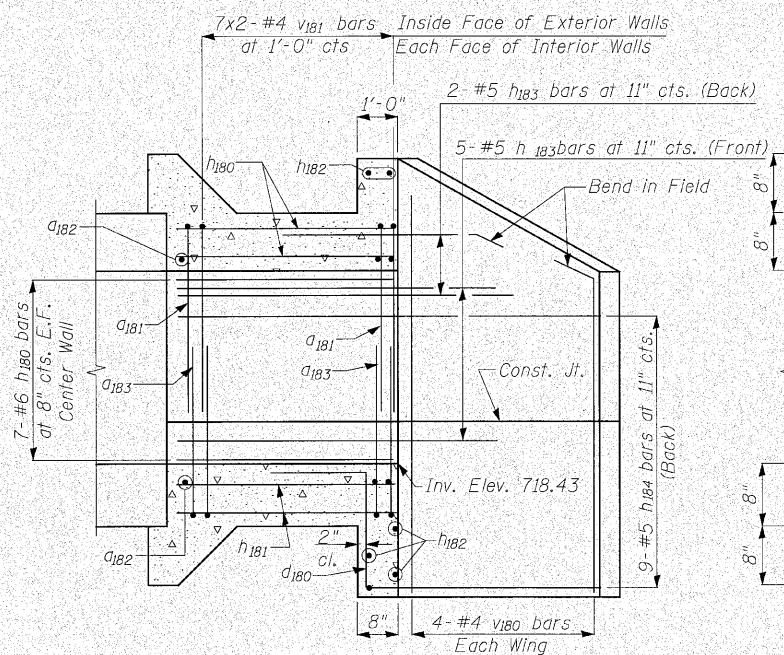
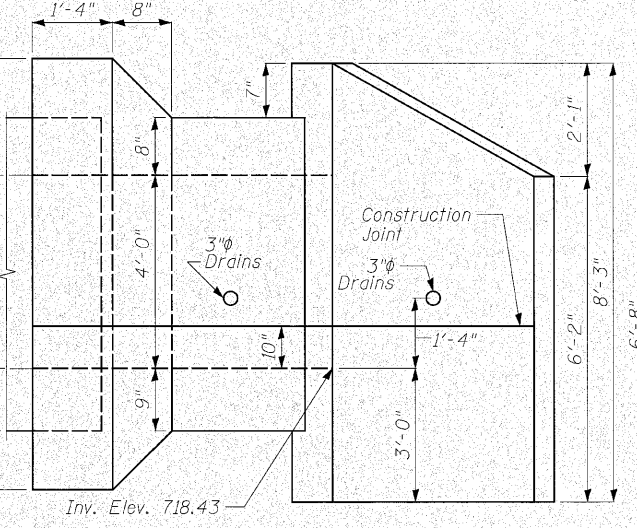


STATE OF ILLINOIS
DEPARTMENT OF TRANSPORTATION

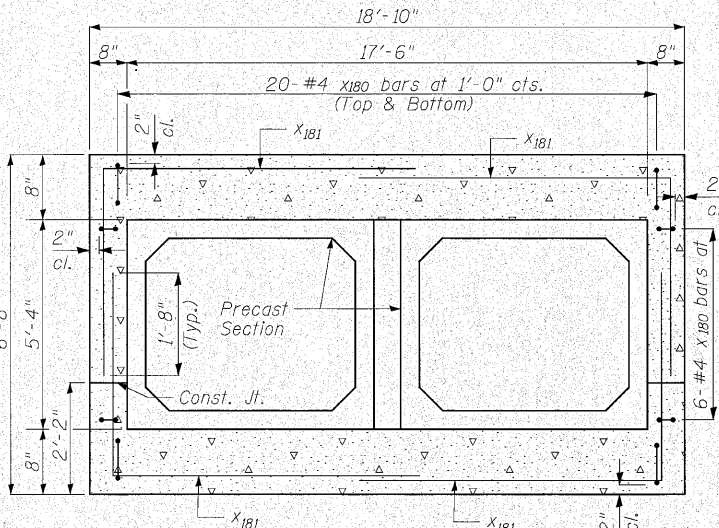
ROUTE NO.	SECTION	COUNTY	TOTAL SHEETS	SHEET NO.	SHEET NO. 9
353	(12&13)WRS-4	Will	608	448	23 SHEETS
FED. ROAD DIST. NO. 7	ILLINOIS	FED. AID PROJECT	Contract No. 62478		



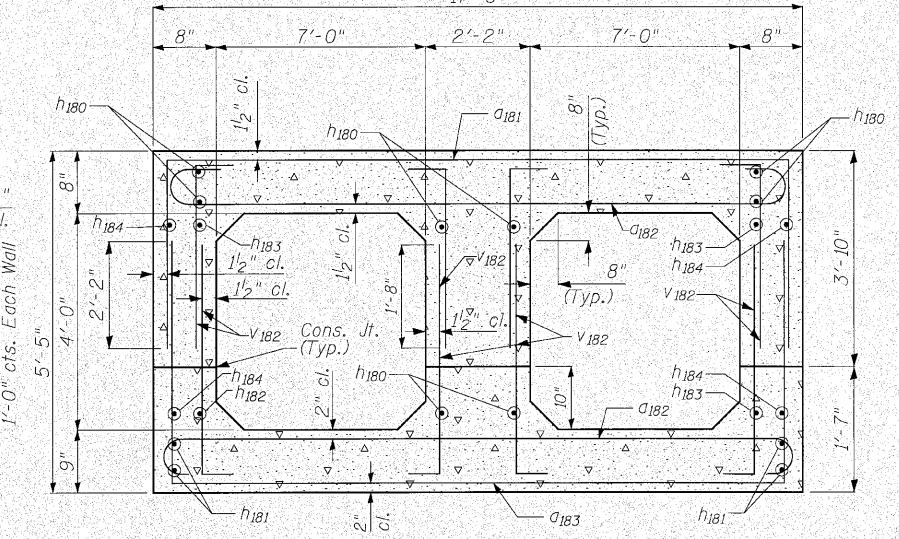
LONG SECTION
Showing Reinforcement



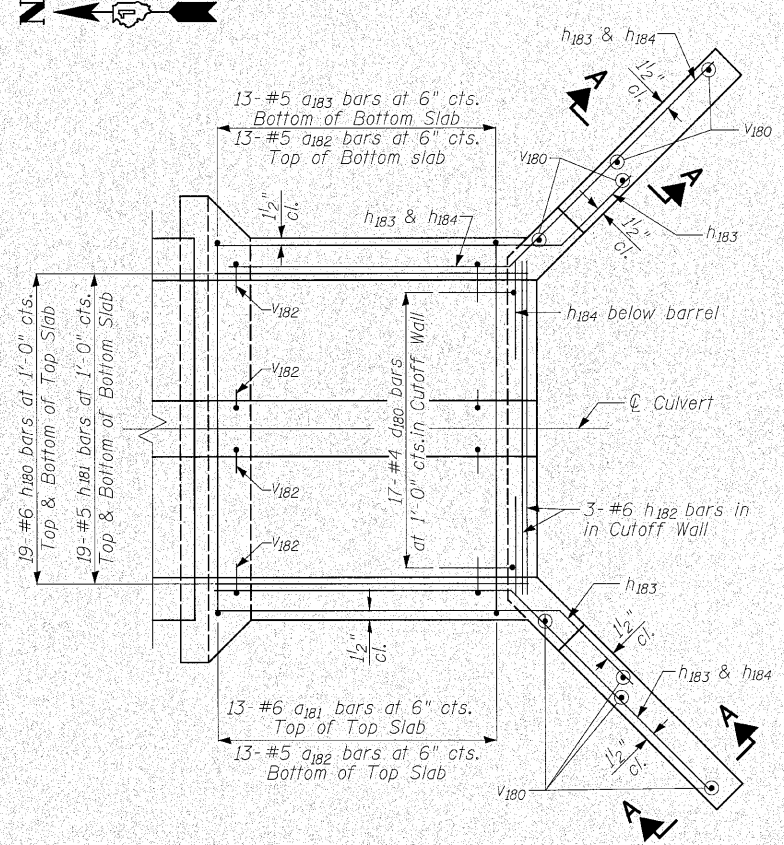
ELEVATION
Showing Dimension



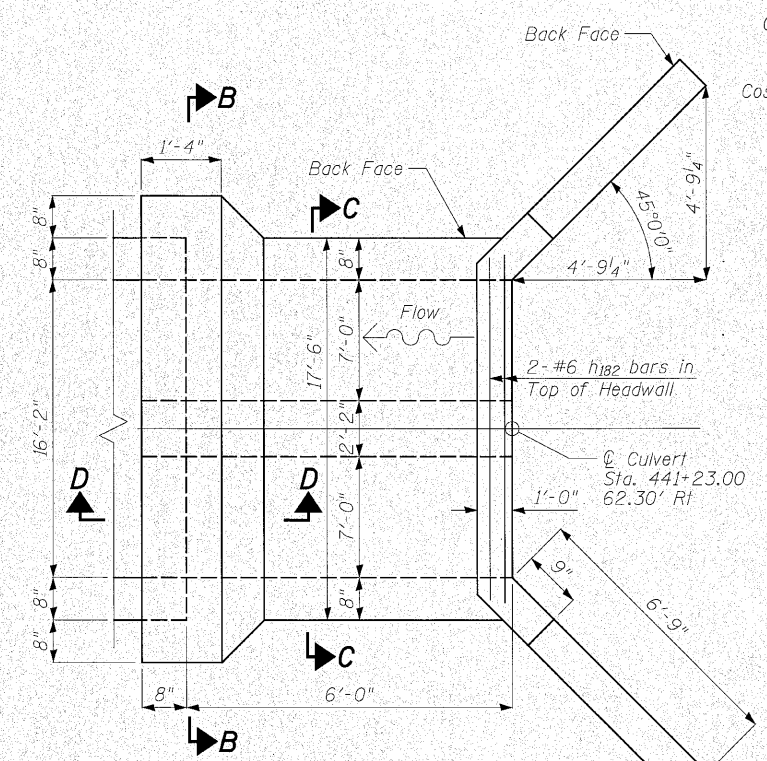
SECTION B-B



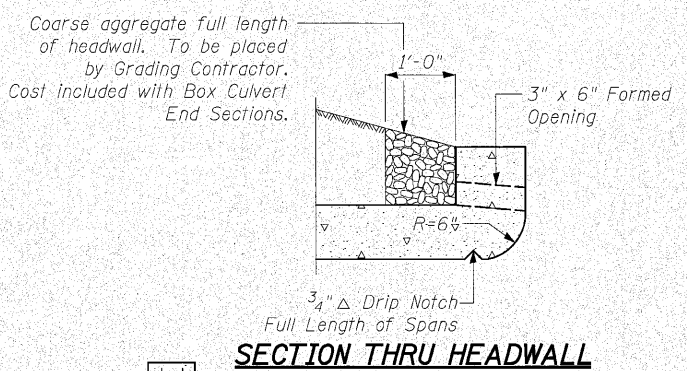
SECTION C-C



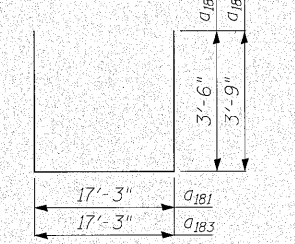
PLAN
Showing Reinforcement



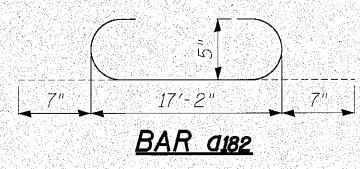
PLAN
Showing Outlines



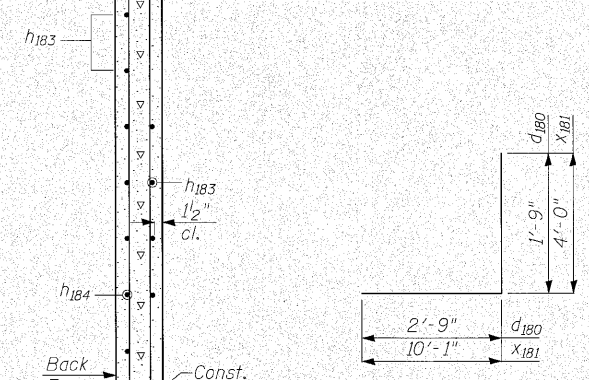
SECTION THRU HEADWALL



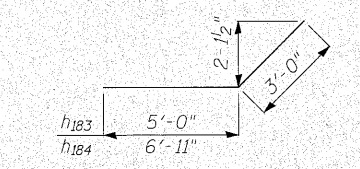
BARS a181 & a183



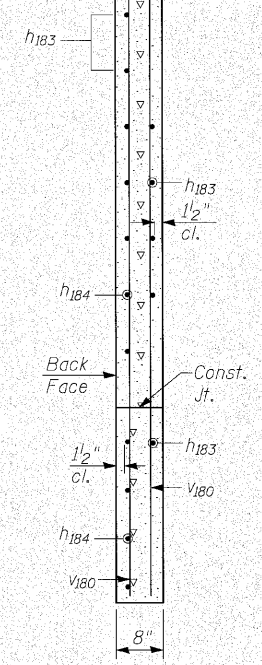
BAR a182



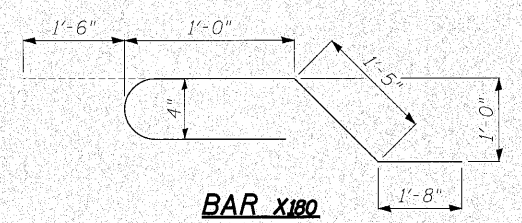
BARS d180 & x181



BARS h183 & h184



SECTION A-A



BAR x180

BILL OF MATERIAL

Bar	No.	Size	Length	Shape
a181	13	#6	24'-3"	┌
a182	26	#5	18'-4"	┌
a183	13	#5	24'-9"	┌
d180	17	#4	4'-6"	┌
h180	52	#6	5'-8"	┌
h181	38	#5	5'-8"	┌
h182	5	#6	16'-6"	┌
h183	14	#5	8'-0"	┌
h184	18	#5	9'-11"	┌
v180	8	#4	7'-11"	┌
v181	56	#4	5'-1"	┌
x180	52	#4	5'-7"	┌
x181	12	#4	14'-1"	┌
			Cu. Yd.	15.1
			Pound	2,990

Note:
Quantity of Concrete Structures and Reinforcement Bars is shown for information only.

END SECTION A
U.S. ROUTE 30 OVER
HICKORY CREEK TRIBUTARY 1
F.A.P. ROUTE 353 SEC. (12&13)WRS-4
WILL COUNTY
STATION 441+23.00
STRUCTURE NO. 099-4626

DESIGNED	SST
CHECKED	SPK
DRAWN	JHP
CHECKED	SST

INFRASTRUCTURE ENGINEERING INCORPORATED
33 West Monroe | Suite 1540 | Chicago, IL 60603
P 312.425.9560 | F 312.425.9564 | www.infrastructure-eng.com

P:\P-03\1503\Drawings\Final_Design\441+23.00\Drawings\Sheets\culv441-sh10ES.A.dwg 6/9/2010 1:39:49 PM