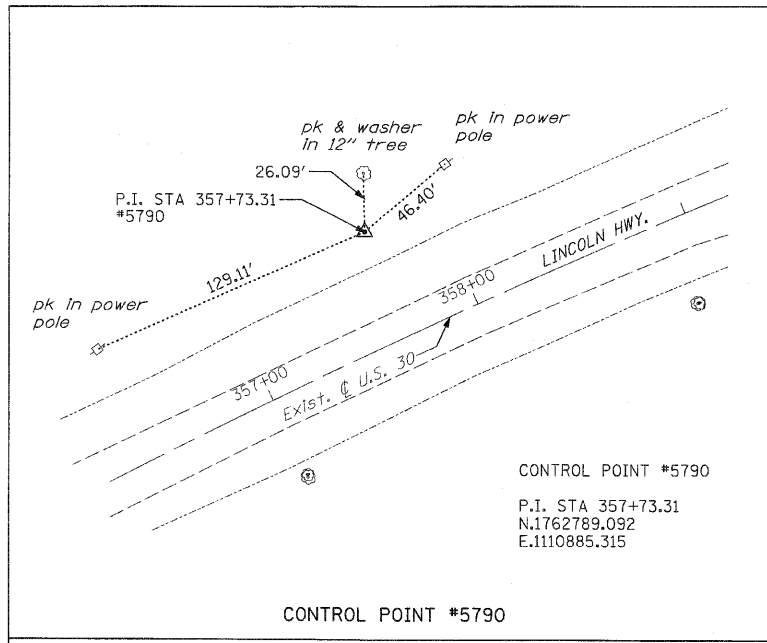
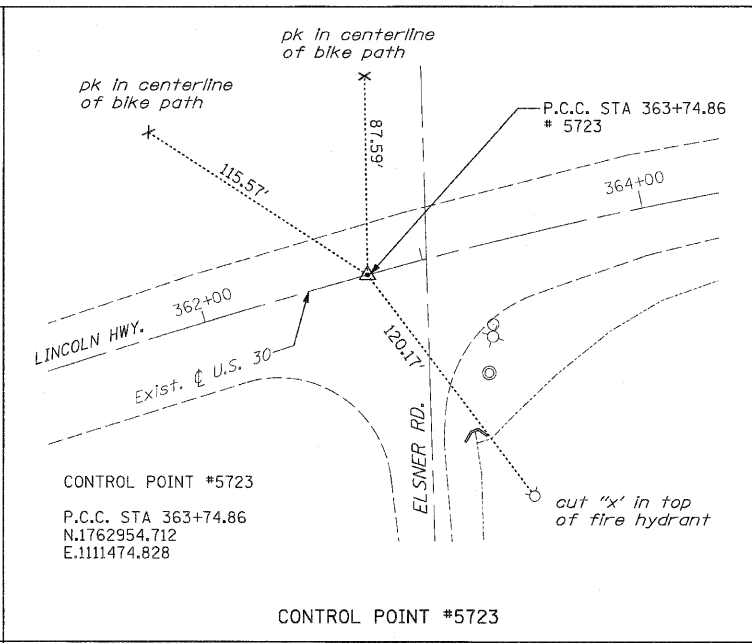


F.A.P. RTE.	SECTION	COUNTY	TOTAL SHEETS	SHEET NO
353	(12&13)WRS-3	WILL	1235	67
STA.	TO STA.			
FED. ROAD DIST. NO.	ILLINOIS	FED. AID PROJECT		



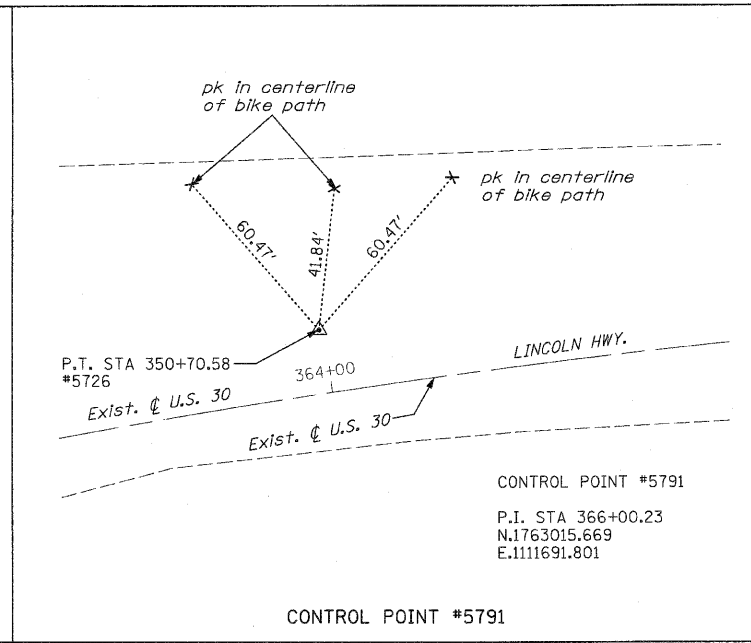
CONTROL POINT #5790
P.I. STA 357+73.31
N.1762789.092
E.1110885.315

CONTROL POINT #5790



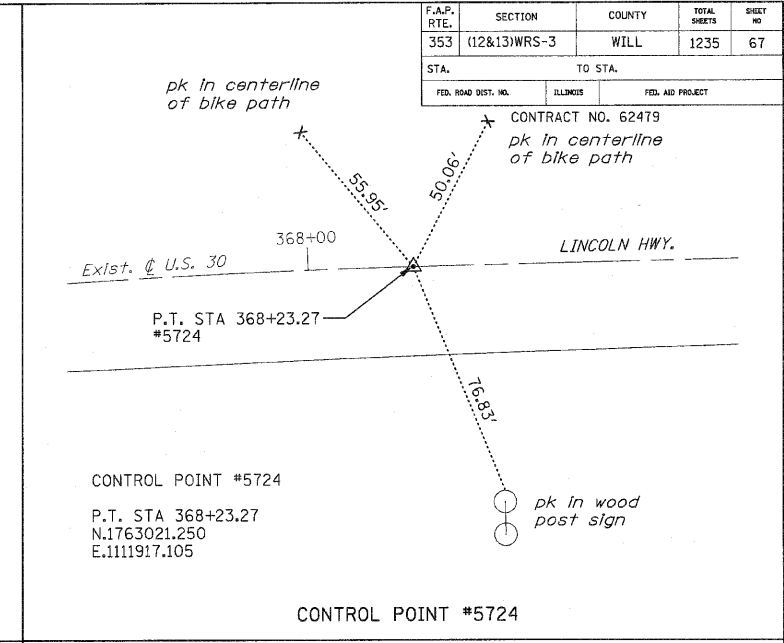
CONTROL POINT #5723
P.C.C. STA 363+74.86
N.1762954.712
E.1111474.828

CONTROL POINT #5723



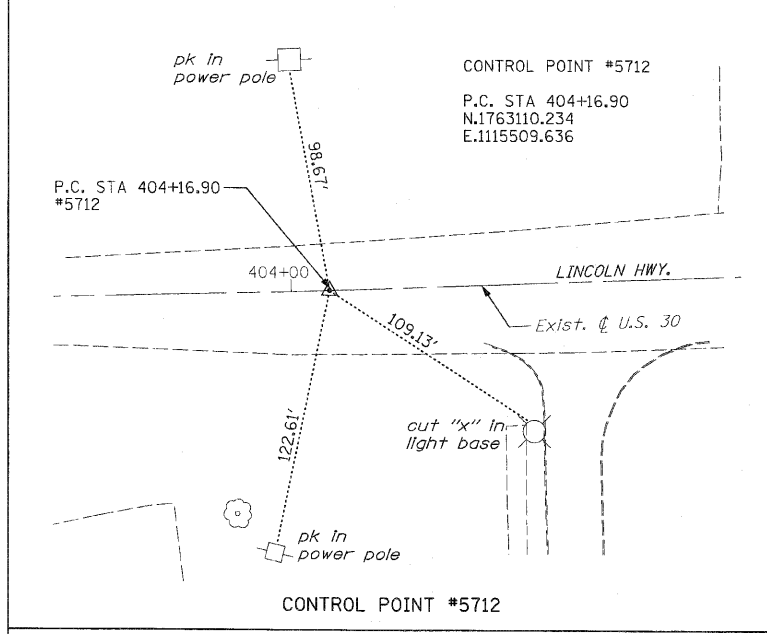
CONTROL POINT #5791
P.I. STA 366+00.23
N.1763015.669
E.1111691.801

CONTROL POINT #5791



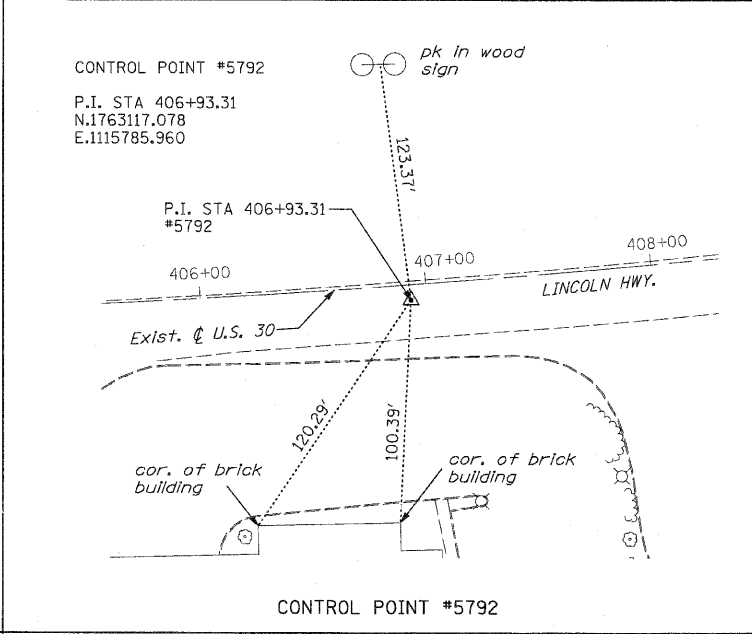
CONTROL POINT #5724
P.T. STA 368+23.27
N.1763021.250
E.1111917.105

CONTROL POINT #5724



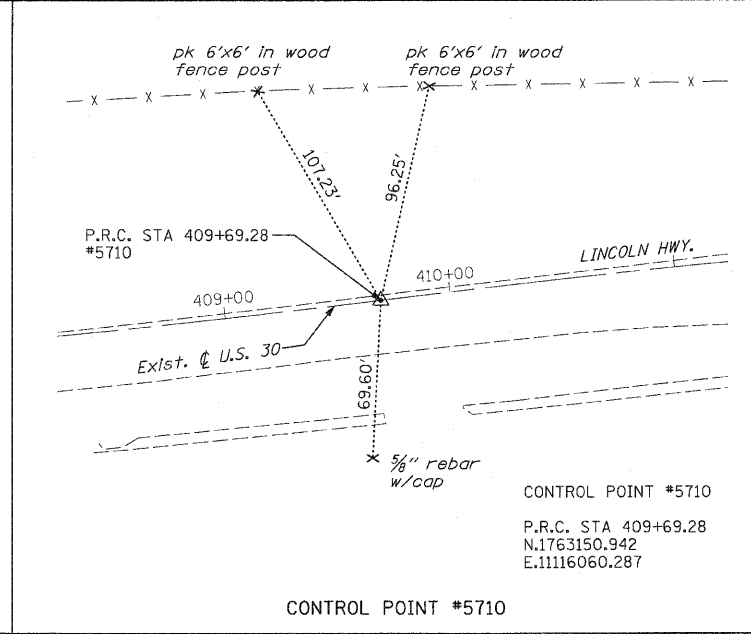
CONTROL POINT #5712
P.C. STA 404+16.90
N.1763110.234
E.1115509.636

CONTROL POINT #5712



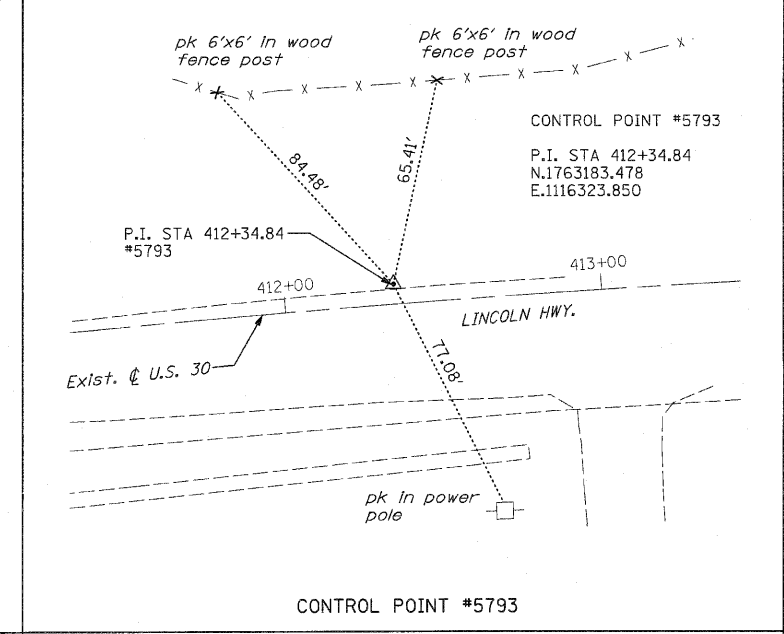
CONTROL POINT #5792
P.I. STA 406+93.31
N.1763117.078
E.1115785.960

CONTROL POINT #5792



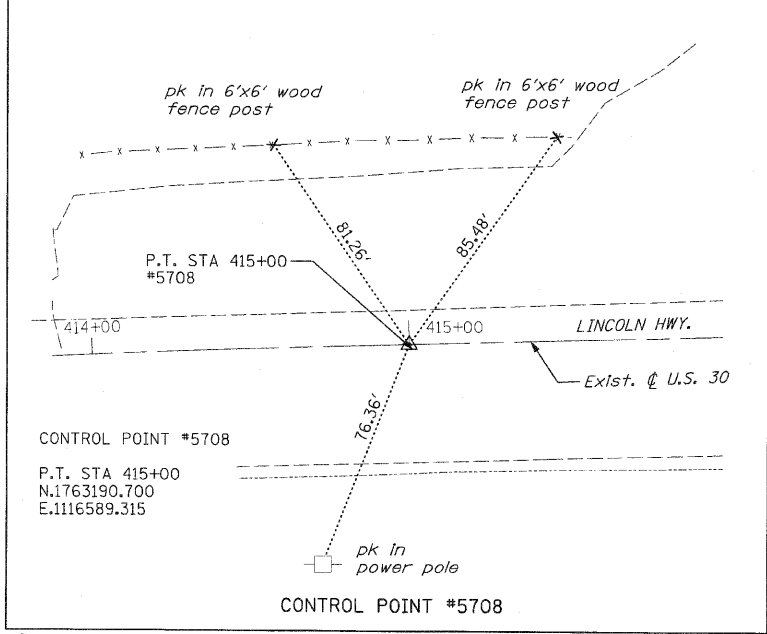
CONTROL POINT #5710
P.R.C. STA 409+69.28
N.1763150.942
E.11116060.287

CONTROL POINT #5710



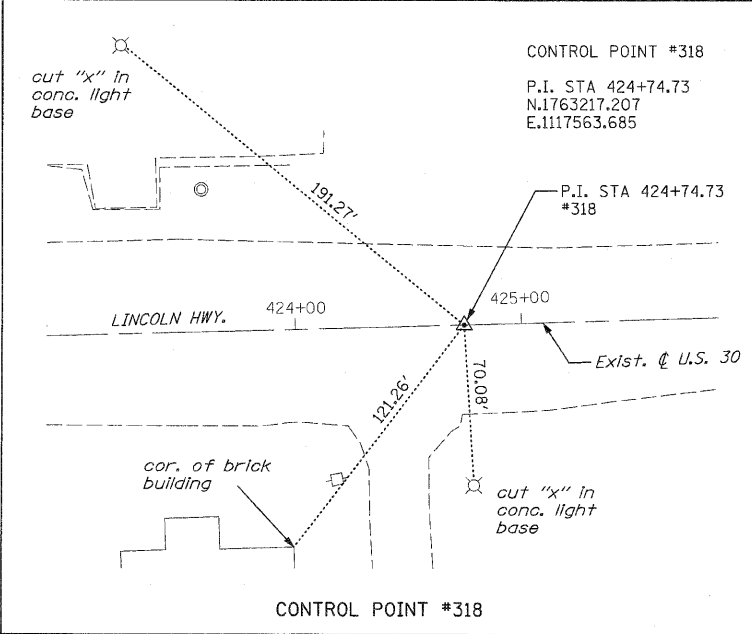
CONTROL POINT #5793
P.I. STA 412+34.84
N.1763183.478
E.1116323.850

CONTROL POINT #5793



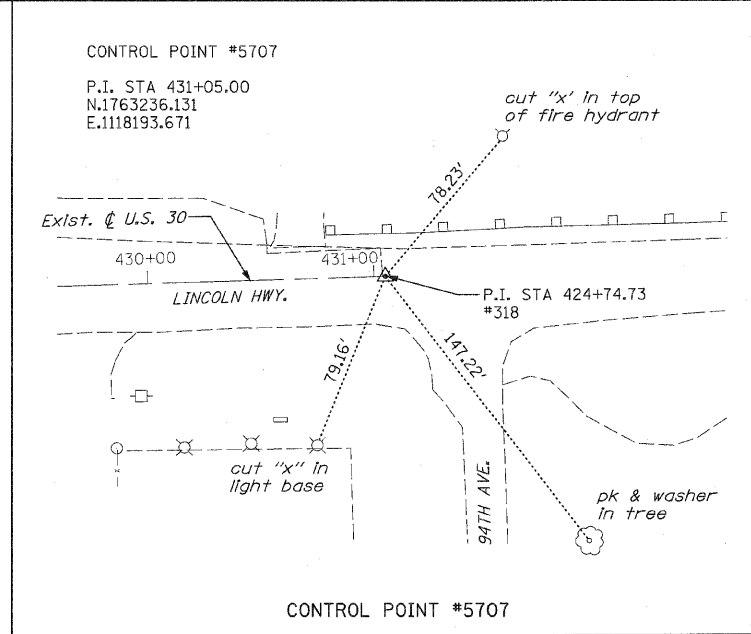
CONTROL POINT #5708
P.T. STA 415+00
N.1763190.700
E.1116589.315

CONTROL POINT #5708



CONTROL POINT #318
P.I. STA 424+74.73
N.1763217.207
E.1117563.685

CONTROL POINT #318



CONTROL POINT #5707
P.I. STA 431+05.00
N.1763236.131
E.1118193.671

CONTROL POINT #5707



REVISIONS	
NAME	DATE

ILLINOIS DEPARTMENT OF TRANSPORTATION
CONTROL TIES
U.S. RTE. 30 (LINCOLN HIGHWAY)
SCALE: 1" = 100'
DATE: / /
DRAWN BY: BAE
CHECKED BY: GB