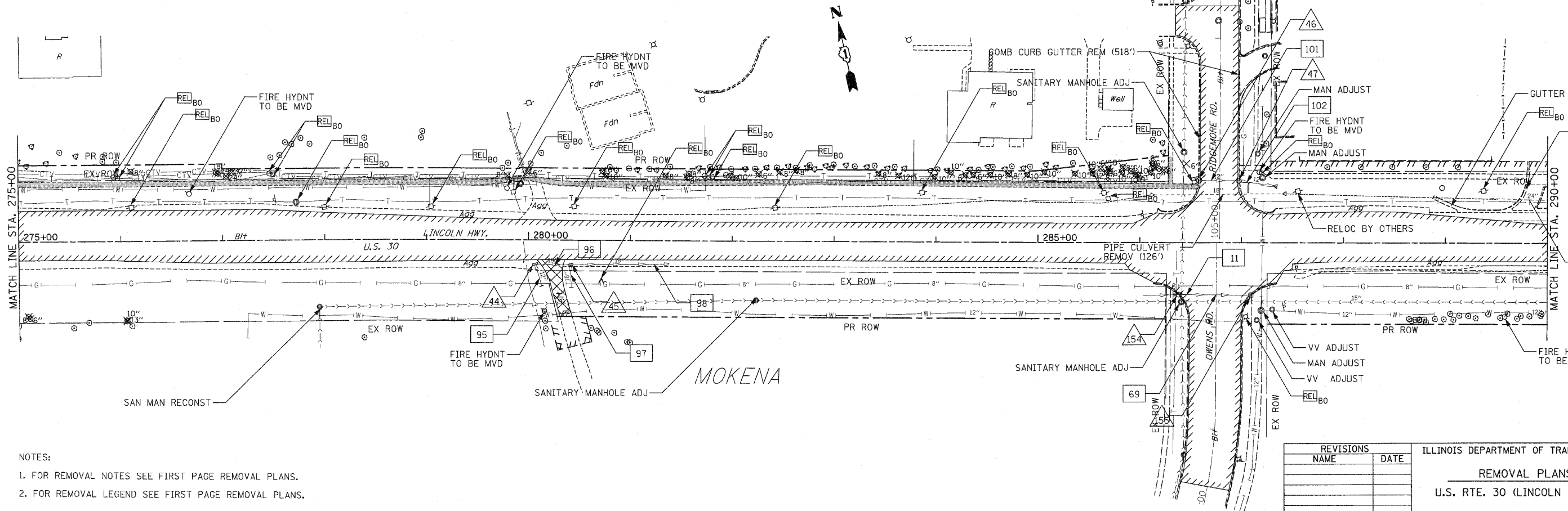
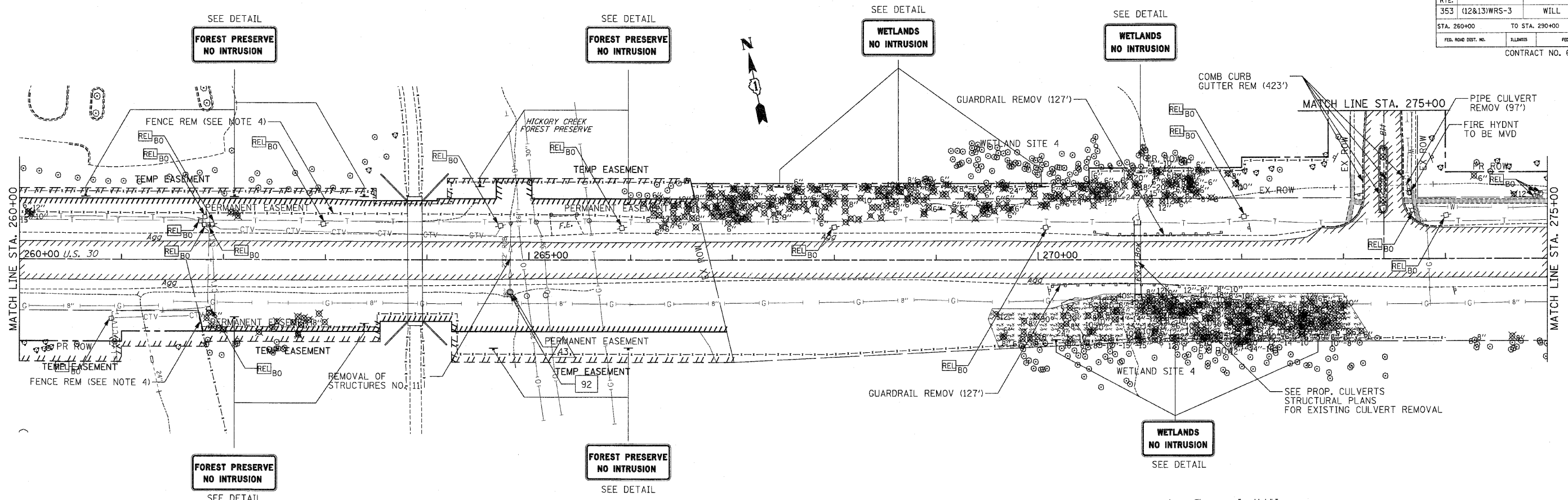


F.A.P. RTE.	SECTION	COUNTY	TOTAL SHEETS	SHEET NO.
353	(12&13)WRS-3	WILL	1235	73
STA. 260+00		TO STA. 290+00		
FED. ROAD DIST. NO.	ILLINOIS	FED. AID PROJECT		
CONTRACT NO. 62479				



- NOTES:
- FOR REMOVAL NOTES SEE FIRST PAGE REMOVAL PLANS.
 - FOR REMOVAL LEGEND SEE FIRST PAGE REMOVAL PLANS.

REVISIONS		ILLINOIS DEPARTMENT OF TRANSPORTATION REMOVAL PLANS U.S. RTE. 30 (LINCOLN HIGHWAY) STA. 260+00 TO STA. 290+00 SCALE: 1" = 50' DRAWN BY: BAE DATE: 10/12/2010 CHECKED BY: GB
NAME	DATE	