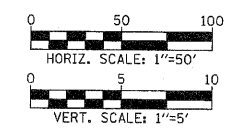
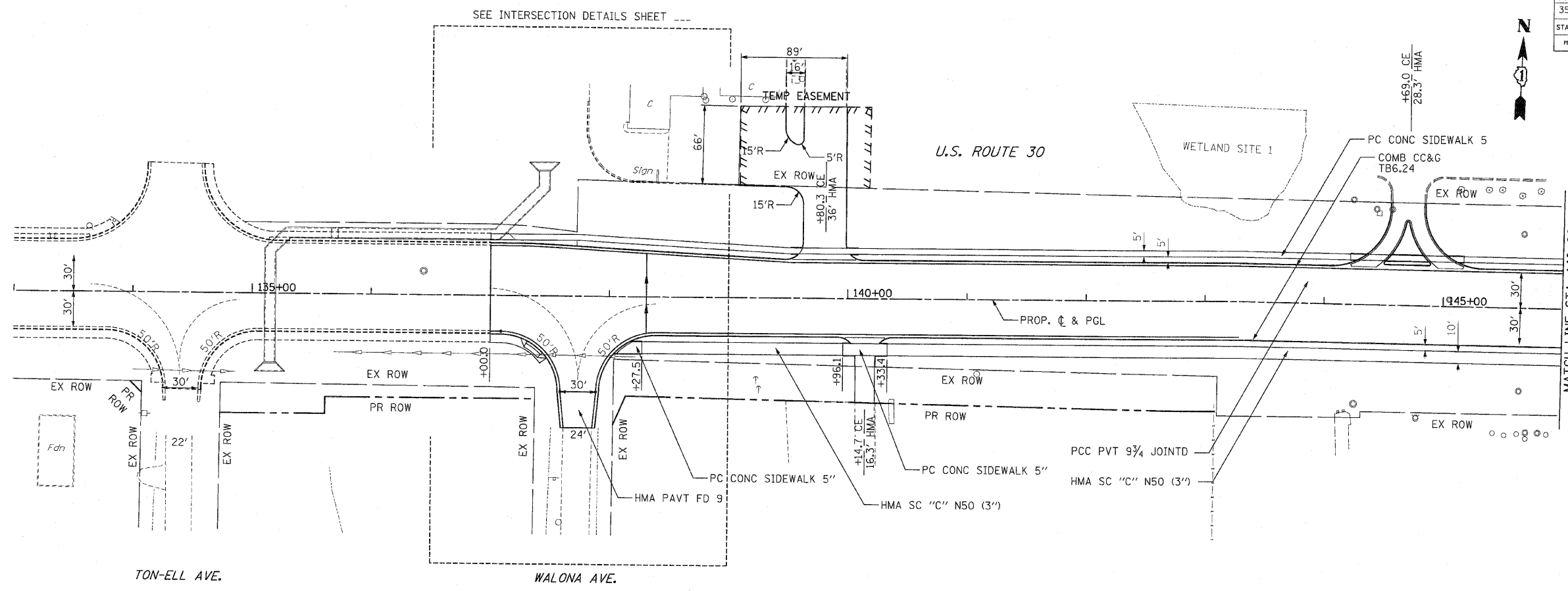
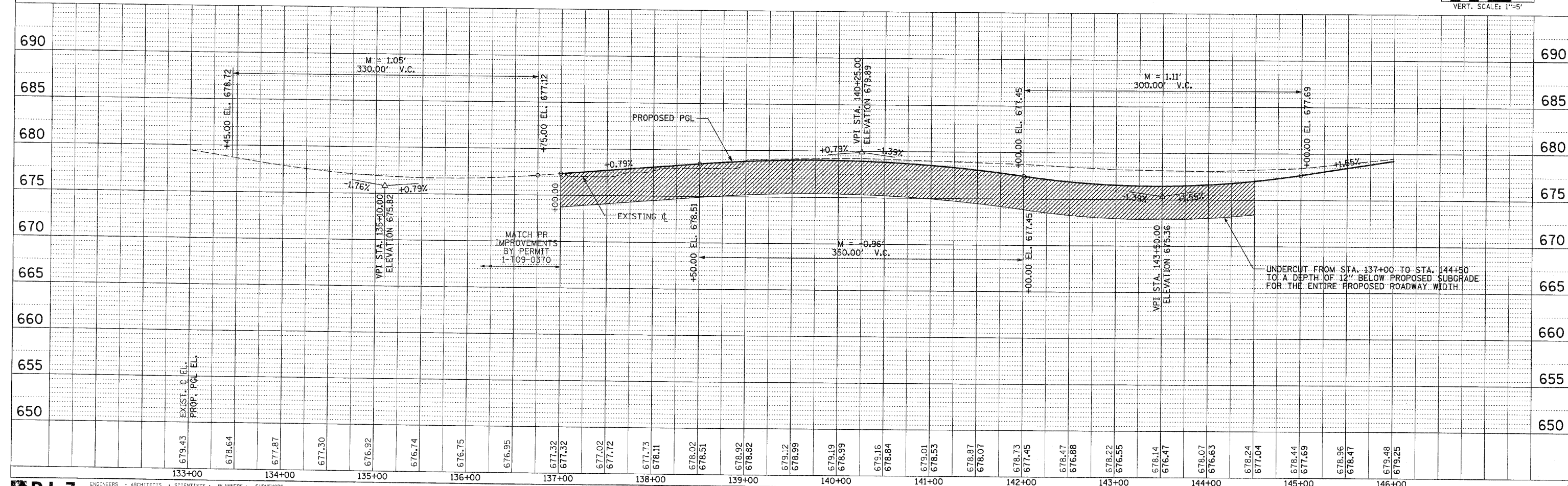


F.A.P. RTE.	SECTION	COUNTY	TOTAL SHEETS	SHEET NO.
353	(12&13)WRS-3	WILL	1235	84
STA. 133+00		TO STA. 146+00		
FED. ROAD DIST. NO.	BLINDS	FED. AID PROJECT		
		CONTRACT NO. 62479		



NOTE: SEE PLAT OF HIGHWAYS FOR ROW INFORMATION.



679.43	678.64	677.87	677.30	676.92	676.74	676.75	676.95	677.32	677.32	677.02	677.72	677.73	678.11	678.02	678.51	678.92	678.92	679.12	678.99	679.19	678.99	679.16	678.84	679.01	678.53	678.87	678.07	678.73	677.45	678.47	676.88	678.22	676.55	678.14	676.47	678.07	676.63	678.24	677.04	678.44	677.69	678.96	678.47	679.48	679.25		
133+00	134+00	135+00	136+00	137+00	138+00	139+00	140+00	141+00	142+00	143+00	144+00	145+00	146+00																																		

DLZ ENGINEERS - ARCHITECTS - SCIENTISTS - PLANNERS - SURVEYORS
 85 W. ALDRICH ROAD, SUITE 220 ANGLINGTON HEIGHTS, IL 60005 TEL: 1947 645-0840