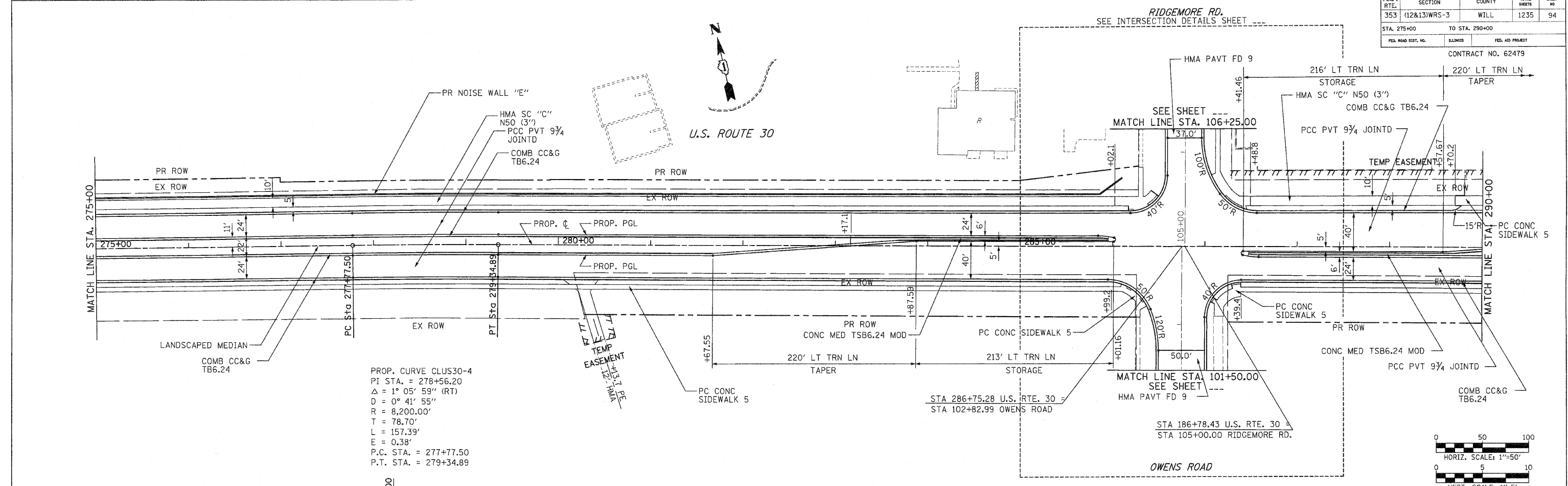


F.A.P. RTE.	SECTION	COUNTY	TOTAL SHEETS	SHEET NO.
353	(12&13)WRS-3	WILL	1235	94
STA. 275+00		TO STA. 290+00		
FED. ROAD DIST. NO.	BLANKETS	FED. AID PROJECT		

CONTRACT NO. 62479



PROP. CURVE CLUS30-4
 PI STA. = 278+56.20
 $\Delta = 1^\circ 05' 59''$ (RT)
 $D = 0^\circ 41' 55''$
 $R = 8,200.00'$
 $T = 78.70'$
 $L = 157.39'$
 $E = 0.38'$
 P.C. STA. = 277+77.50
 P.T. STA. = 279+34.89

