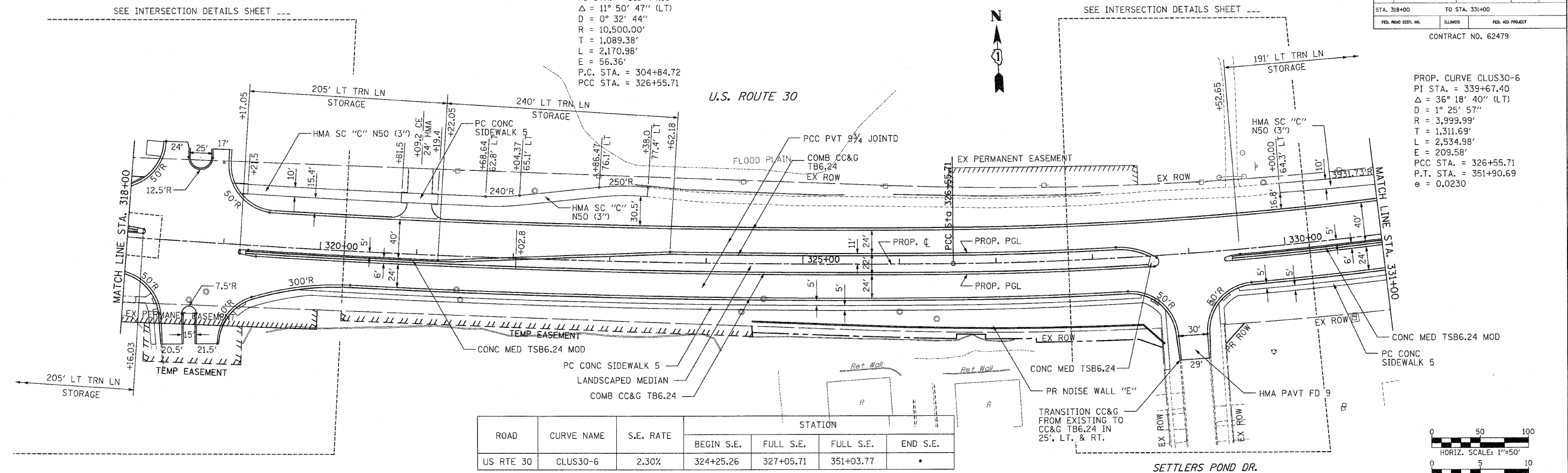


F.A.P. RTE.	SECTION	COUNTY	TOTAL SHEETS	SHEET NO.
353	(12&13)WRS-3	WILL	1235	97
STA. 318+00		TO STA. 331+00		
FED. ROAD EST. NO.	ILLINOIS	FED. AID PROJECT		

CONTRACT NO. 62479

PROP. CURVE CLUS30-5  
 PI STA. = 315+74.10  
 $\Delta = 11^\circ 50' 47''$  (LT)  
 $D = 0^\circ 32' 44''$   
 $R = 10,500.00'$   
 $T = 1,089.38'$   
 $L = 2,170.98'$   
 $E = 56.36'$   
 $P.C. STA. = 304+84.72$   
 $P.C.C. STA. = 326+55.71$

PROP. CURVE CLUS30-6  
 PI STA. = 339+67.40  
 $\Delta = 36^\circ 18' 40''$  (LT)  
 $D = 1^\circ 25' 57''$   
 $R = 3,999.99'$   
 $T = 1,311.69'$   
 $L = 2,534.98'$   
 $E = 209.58'$   
 $P.C. STA. = 326+55.71$   
 $P.T. STA. = 351+90.69$   
 $e = 0.0230$



ROAD	CURVE NAME	S.E. RATE	STATION			
			BEGIN S.E.	FULL S.E.	FULL S.E.	END S.E.
US RTE 30	CLUS30-6	2.30%	324+25.26	327+05.71	351+03.77	*

\* FULL S.E. CURVE CLUS30-6 TRANSITIONS DIRECTLY TO FULL S.E. OF CURVE CLUS30-7.

