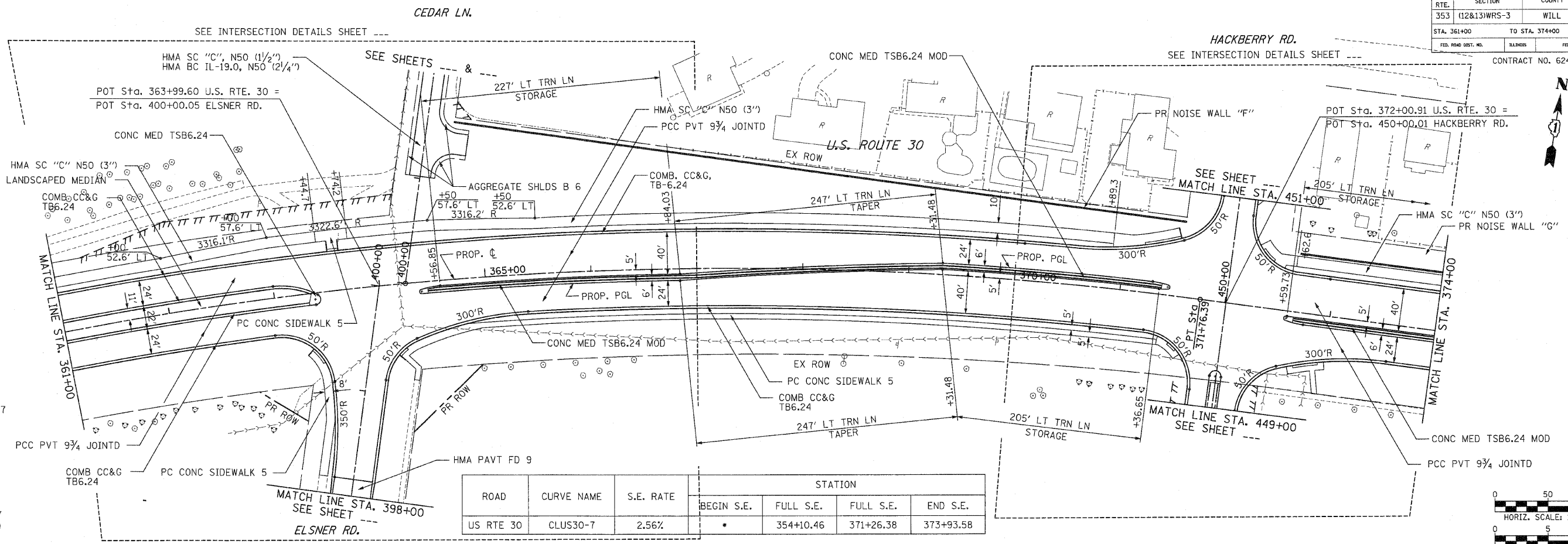


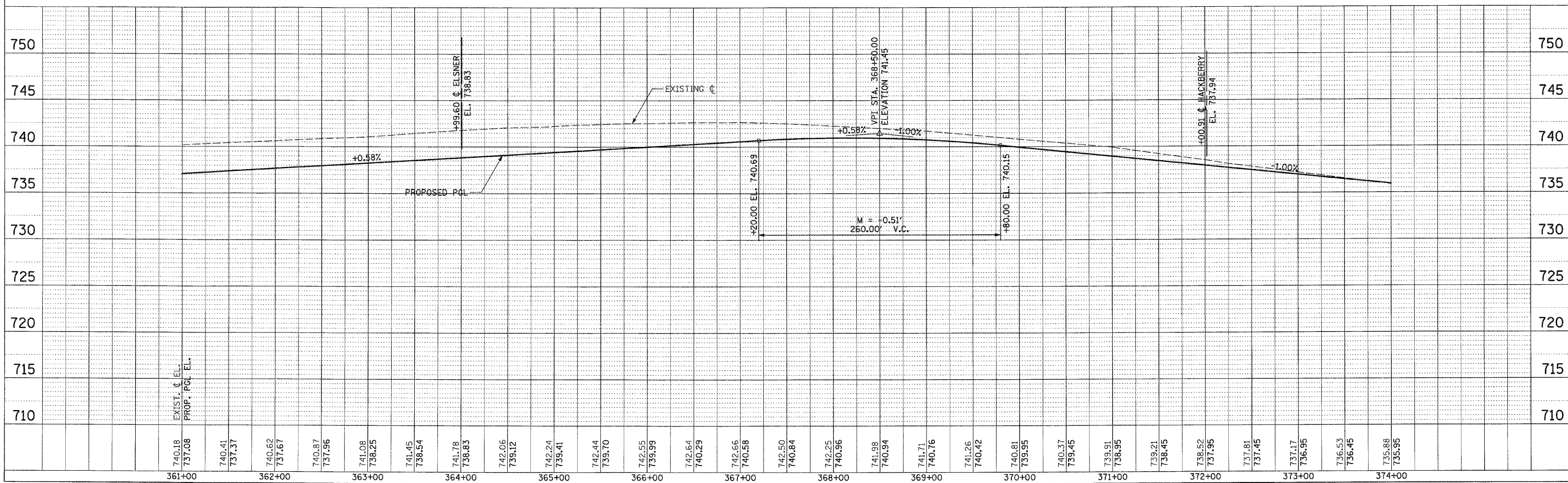
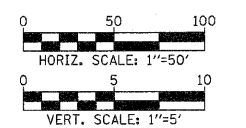
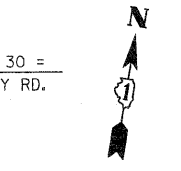
F.A.P. RTE.	SECTION	COUNTY	TOTAL SHEETS	SHEET NO
353	(12&13)WRS-3	WILL	1235	100
STA. 361+00		TO STA. 374+00		
FED. ROAD DIST. NO.	BLINDS	FED. AID PROJECT		
		CONTRACT NO. 62479		



PROP. CURVE CLUS30-7
 PI STA. = 362+63.70
 $\Delta = 32^\circ 58' 26''$ (RT)
 $D = 1^\circ 45' 17''$
 $R = 3,265.00'$
 $T = 966.33'$
 $L = 1,879.01'$
 $E = 140.00'$
 $e = 0.0256$
 P.C. STA. = 352+97.37
 P.T. STA. = 371+76.39

ROAD	CURVE NAME	S.E. RATE	STATION			
			BEGIN S.E.	FULL S.E.	FULL S.E.	END S.E.
US RTE 30	CLUS30-7	2.56%	*	354+10.46	371+26.38	373+93.58

* FULL S.E. CURVE CLUS30-6 TRANSITIONS DIRECTLY TO FULL S.E. OF CURVE CLUS30-7.



740.18	740.41	740.62	740.87	741.08	741.45	741.78	742.06	742.24	742.44	742.55	742.64	742.66	742.50	742.25	741.98	741.71	741.26	740.81	740.37	739.91	739.21	738.52	737.81	737.17	736.53	735.88
737.08	737.37	737.67	737.96	738.25	738.54	738.83	739.12	739.41	739.70	739.99	740.29	740.58	740.84	740.96	740.94	740.76	740.42	739.95	739.45	738.95	738.45	737.95	737.45	736.95	736.45	735.95
361+00	362+00	363+00	364+00	365+00	366+00	367+00	368+00	369+00	370+00	371+00	372+00	373+00	374+00													