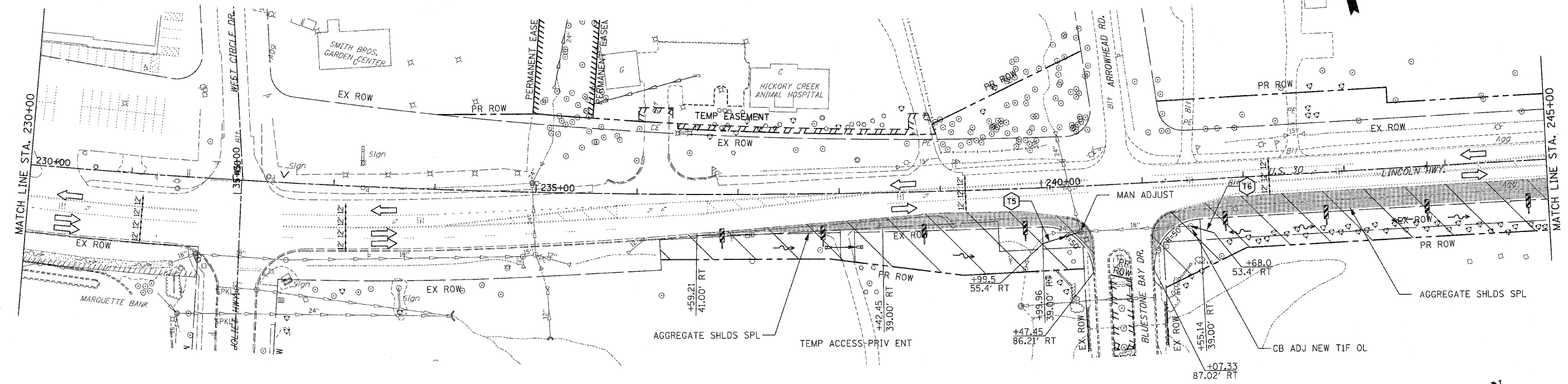
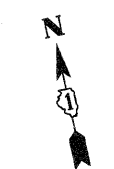
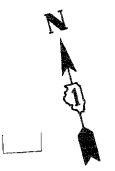
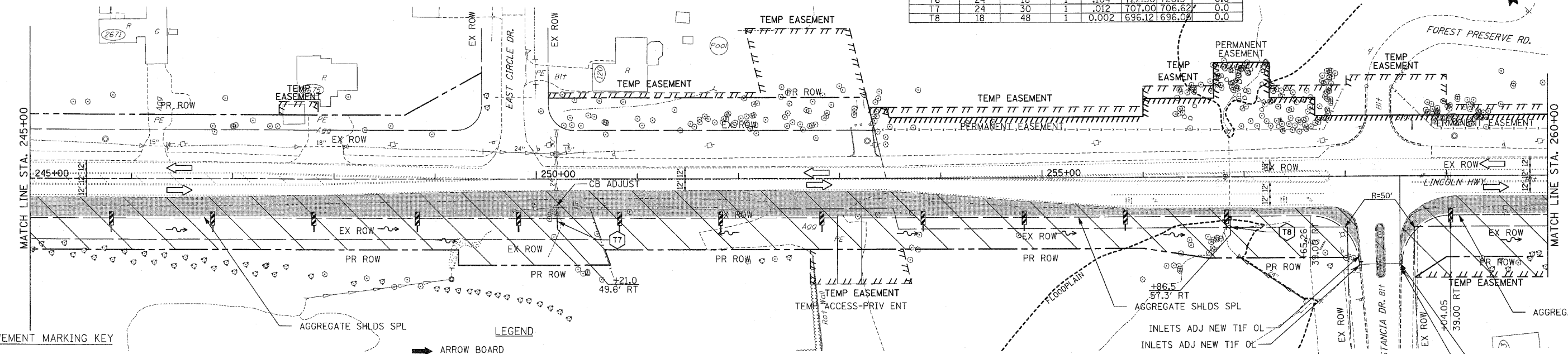


F.A.P. RTE.	SECTION	COUNTY	TOTAL SHEETS	SHEET NO
353	(12&13)WRS-3	WILL	1235	123
STA. 230+00		TO STA. 260+00		
FED. ROAD DIST. NO.	ILLINKS	FED. AID PROJECT		

CONTRACT NO. 62479



PIPE NO.	PIPE LENGTH	PIPE DIAMETER	PIPE TYPE	SLOPE (FT/FT)	INVERT U.S.	INVERT D.S.	TRENCH BACKFILL
T5	39	24	2	.076	720.30	717.33	1.9
T6	24	18	1	.104	722.50	720.5	0.0
T7	24	30	1	.012	707.00	706.62	0.0
T8	18	48	1	0.002	696.12	696.08	0.0



PAVEMENT MARKING KEY

- 1 4" SOLID - WHITE
- 2 12" SOLID - YELLOW
- 3 4" SOLID - YELLOW @ 11" c-c
- 4 24" STOP BAR - WHITE
- 5 12" SOLID - WHITE
- 6 6" SOLID - WHITE
- 7 6"-6 1/2" DASH-WHITE
- 8 4" SOLID - YELLOW
- 9 4" 30"/10' DASH WHITE

LEGEND

- ARROW BOARD
- TEMPORARY PAVEMENT
- TEMPORARY PAVEMENT CONSTRUCTED IN EARLIER STAGE
- CONSTRUCTION ZONE
- TYPE III BARRICADE WITH FLASHING LIGHTS
- TYPE II BARRICADE
- DRUM OR VERTICAL BARRICADE
- DIRECTION INDICATOR BARRICADE WITH STEADY BURN MONODIRECTIONAL LIGHT
- FLASHING LIGHT
- XX TEMPORARY STRUCTURE NUMBER
- XX TEMPORARY PIPE NUMBER

REVISIONS	
NAME	DATE

ILLINOIS DEPARTMENT OF TRANSPORTATION
MAINTENANCE OF TRAFFIC
 PRE-STAGE 1
 U.S. RTE. 30 (LINCOLN HIGHWAY)
 STA. 230+00 TO STA. 260+00
 SCALE : 1" = 50'
 DATE : / /
 DRAWN BY : BAE
 CHECKED BY : GB