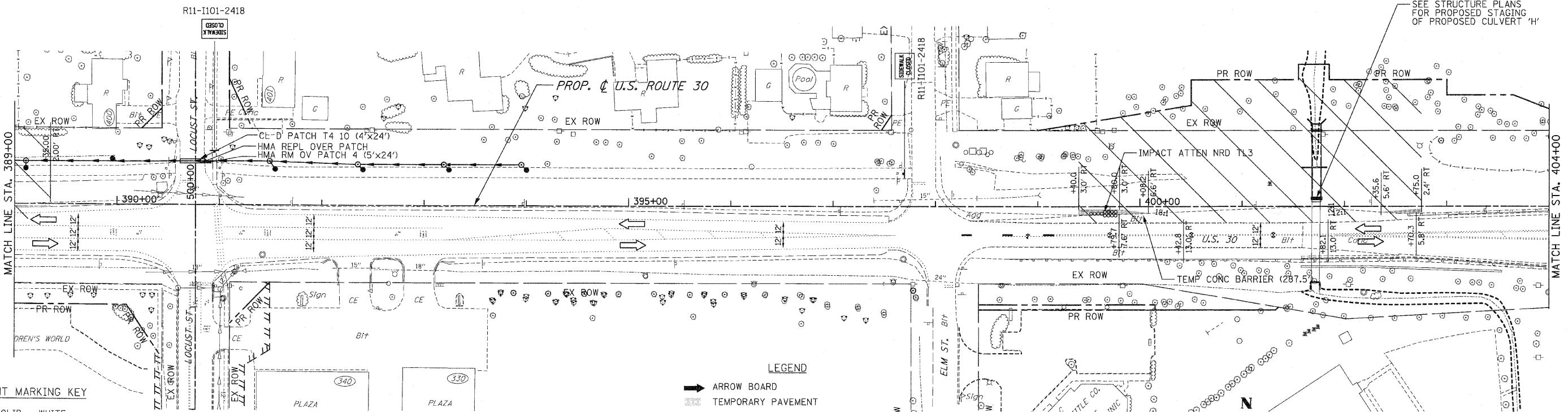
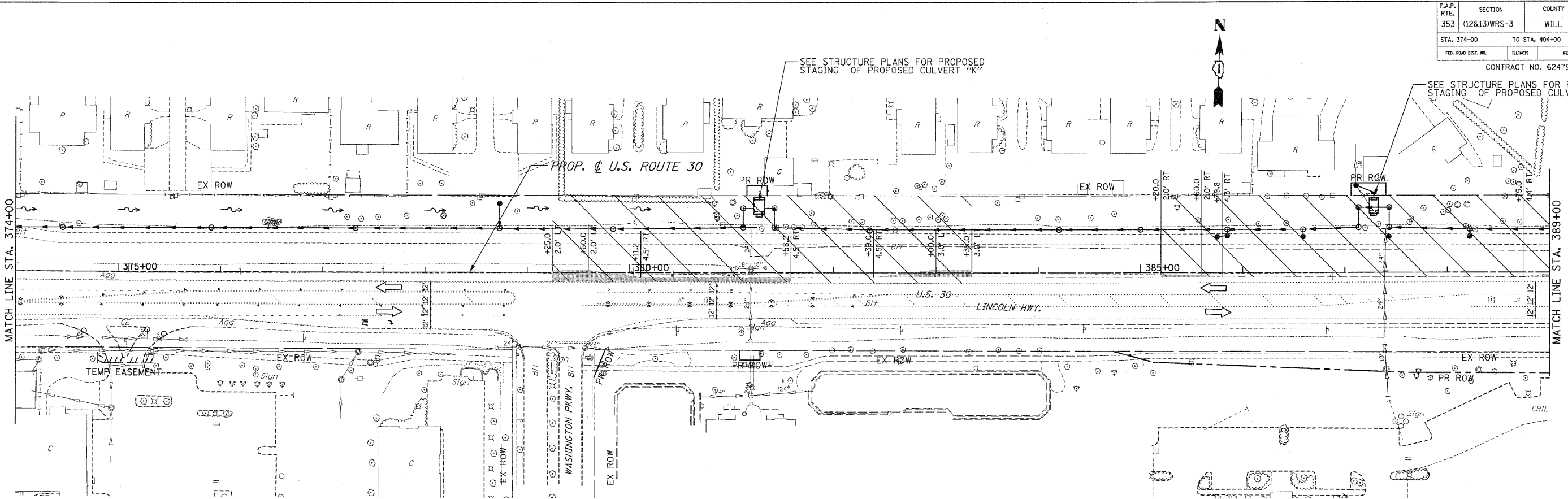


F.A.P. RTE.	SECTION	COUNTY	TOTAL SHEETS	SHEET NO
353	(12&13)WRS-3	WILL	1235	128
STA. 374+00		TO STA. 404+00		
FED. ROAD DIST. NO.	ILLINOIS	FED. AID PROJECT		

CONTRACT NO. 62479



PAVEMENT MARKING KEY

1	4" SOLID - WHITE
2	12" SOLID - YELLOW
3	4" SOLID - YELLOW @ 11" C-C
4	24" STOP BAR - WHITE
5	12" SOLID - WHITE
6	6" SOLID - WHITE
7	6"-6 1/2" DASH-WHITE
8	4" SOLID - YELLOW
9	4" 30'/10' DASH WHITE

LEGEND

	ARROW BOARD
	TEMPORARY PAVEMENT
	TEMPORARY PAVEMENT CONSTRUCTED IN EARLIER STAGE
	CONSTRUCTION ZONE
	TYPE III BARRICADE WITH FLASHING LIGHTS
	TYPE II BARRICADE
	DRUM OR VERTICAL BARRICADE
	DIRECTION INDICATOR BARRICADE WITH STEADY BURN MONODIRECTIONAL LIGHT
	FLASHING LIGHT

	TEMPORARY STRUCTURE NUMBER
	TEMPORARY PIPE NUMBER

REVISIONS	
NAME	DATE

ILLINOIS DEPARTMENT OF TRANSPORTATION
MAINTENANCE OF TRAFFIC
 PRE-STAGE 1
 U.S. RTE. 30 (LINCOLN HIGHWAY)
 STA. 374+00 TO STA. 404+00
 SCALE : 1" = 50'
 DATE : / /
 DRAWN BY : BAE
 CHECKED BY : GB