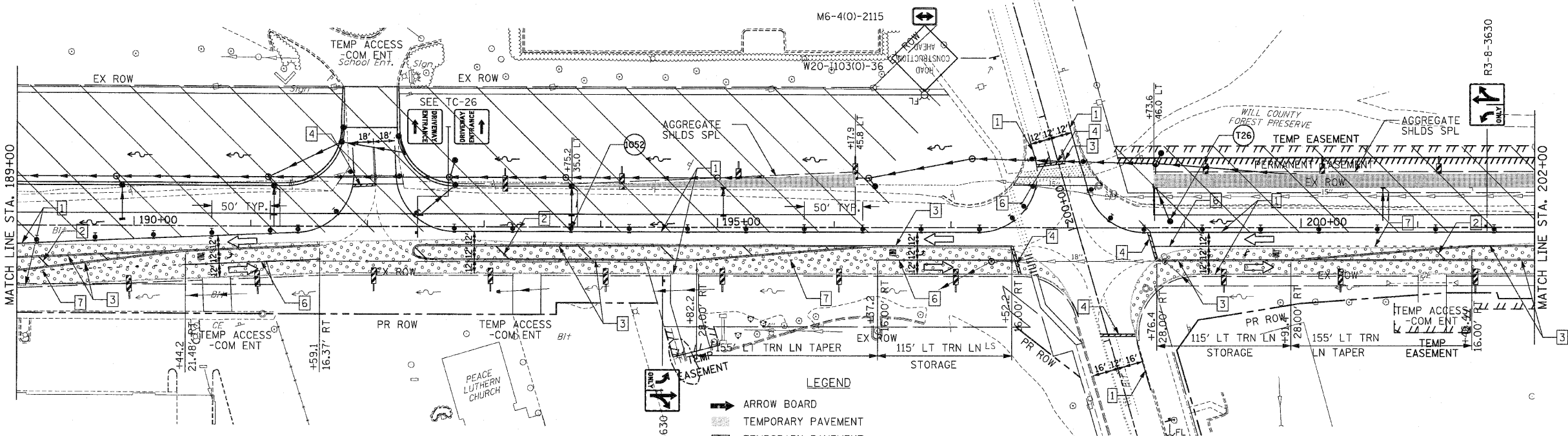
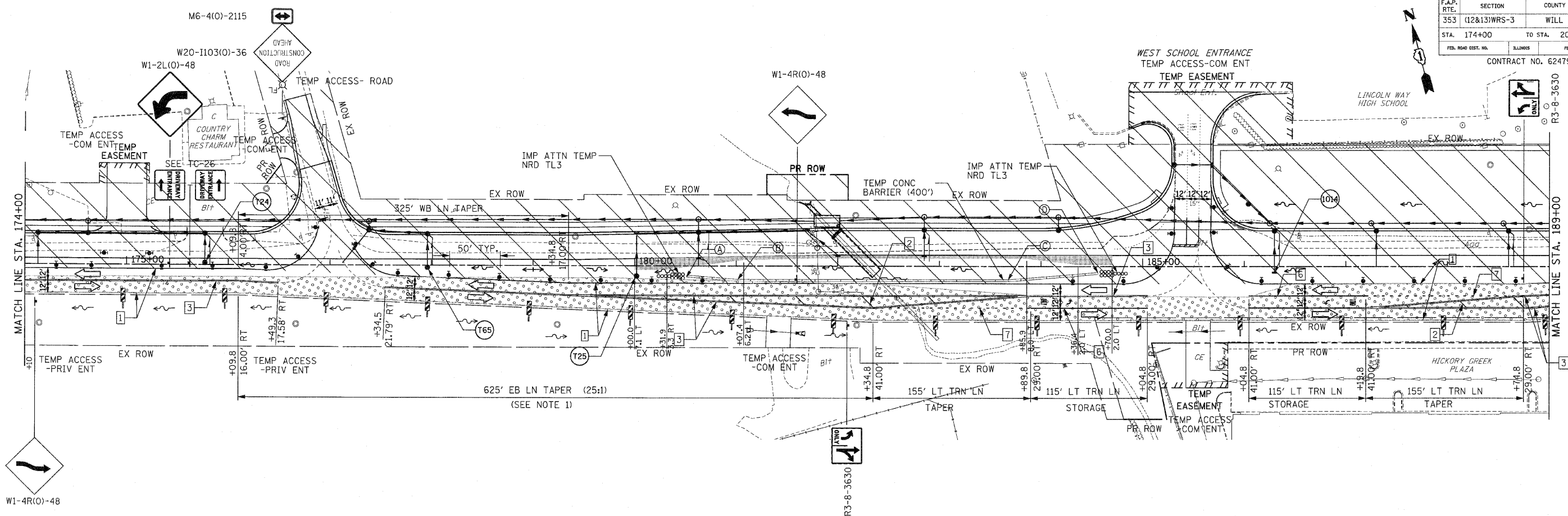


F.A.P. RTE.	SECTION	COUNTY	TOTAL SHEETS	SHEET NO.
353	(12&13)WRS-3	WILL	1235	134
STA. 174+00	TO STA. 202+00			
FED. ROAD DIST. NO.	ILLINOIS	FED. AID PROJECT		
CONTRACT NO. 62479				



- PAVEMENT MARKING KEY**
- 1 4" SOLID - WHITE
 - 2 12" SOLID - YELLOW
 - 3 4" SOLID - YELLOW @ 11" C-C
 - 4 24" STOP BAR - WHITE
 - 5 12" SOLID - WHITE
 - 6 6" SOLID - WHITE
 - 7 6"-6'/2" DASH-WHITE
 - 8 4" SOLID - YELLOW
 - 9 4" 30'/10" DASH WHITE

- NOTES:**
- STATION AND OFFSET GIVEN TO OUTSIDE EDGE OF TRAVELED WAY.
 - STATION AND OFFSET GIVEN TO EB EDGE OF TRAVELED WAY.

TEMPORARY CONCRETE BARRIER LAYOUT (TO FF)

LOCATION	STATION	OFFSET
A	180+51.15	10.79' RT
B	181+01.64	15.00' RT
C	183+67.58	15.00' RT
D	184+55.94	7.64' RT

- LEGEND**
- ARROW BOARD
 - TEMPORARY PAVEMENT
 - TEMPORARY PAVEMENT CONSTRUCTED IN EARLIER STAGE
 - CONSTRUCTION ZONE
 - TYPE III BARRICADE WITH FLASHING LIGHTS
 - TYPE II BARRICADE
 - DRUM OR VERTICAL BARRICADE
 - DIRECTION INDICATOR BARRICADE WITH STEADY BURN MONODIRECTIONAL LIGHT
 - FLASHING LIGHT

- XX TEMPORARY STRUCTURE NUMBER
- XX TEMPORARY PIPE NUMBER

REVISIONS	
NAME	DATE

ILLINOIS DEPARTMENT OF TRANSPORTATION
MAINTENANCE OF TRAFFIC
 STAGE 1
 U.S. RTE. 30 (LINCOLN HIGHWAY)
 STA. 174+00 TO STA. 202+00
 SCALE: 1" = 50'
 DATE: / / DRAWN BY: BAE
 CHECKED BY: GB