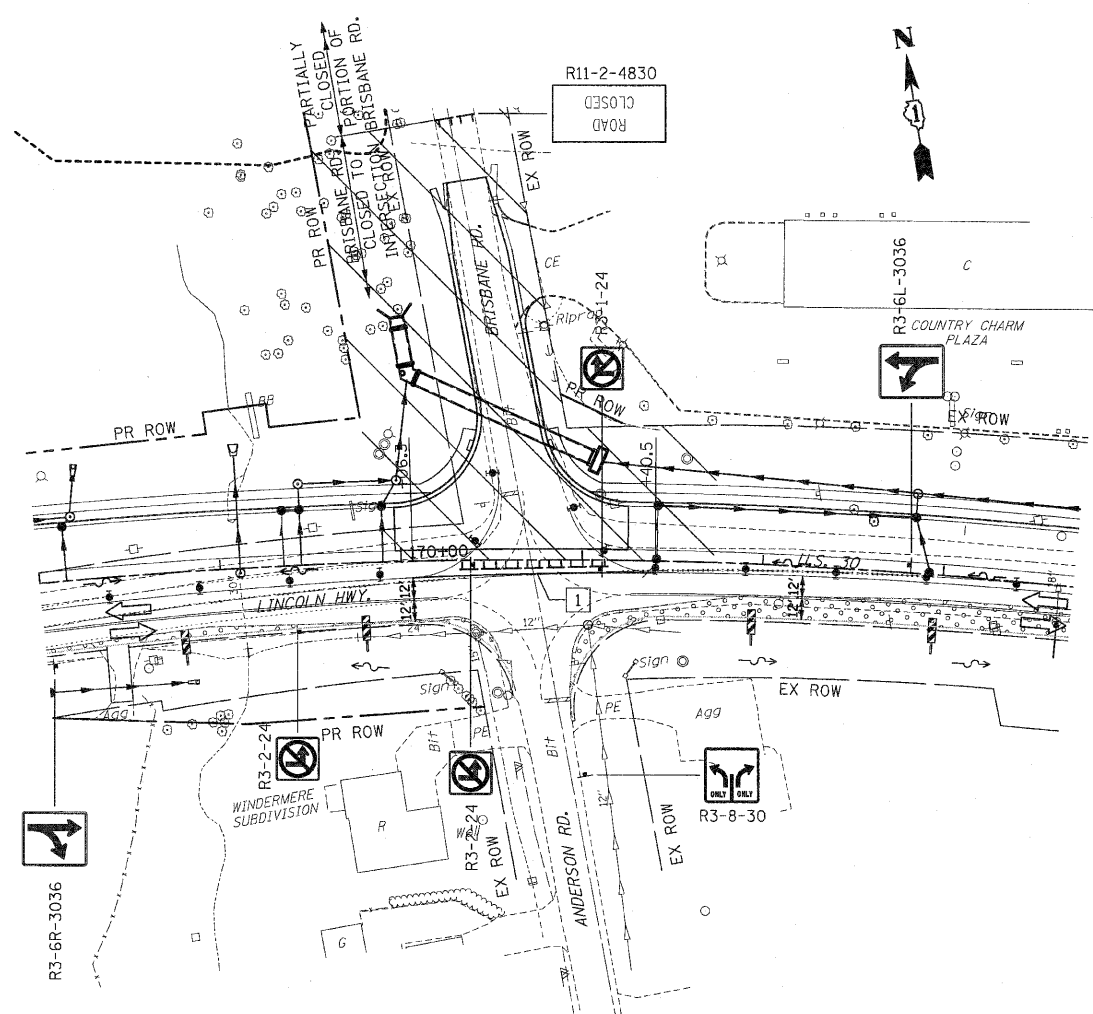
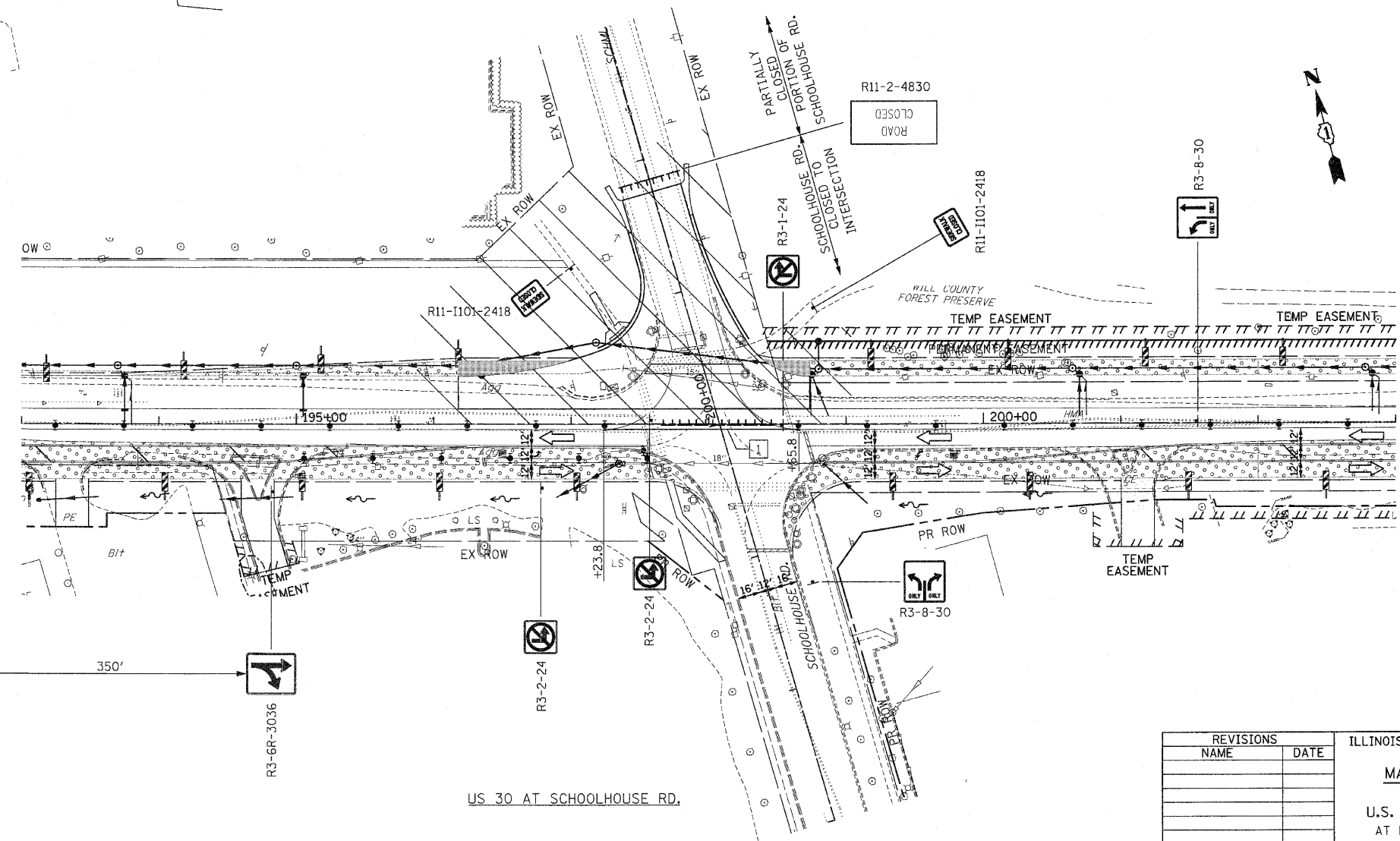


F.A.P. RTE.	SECTION	COUNTY	TOTAL SHEETS	SHEET NO
353	(12&13)WRS-3	WILL	1235	146
STA.		TO STA.		
FED. ROAD DIST. NO.	BLINKS	FED. AID PROJECT		

CONTRACT NO. 62479



US 30 AT BRISBANE RD.



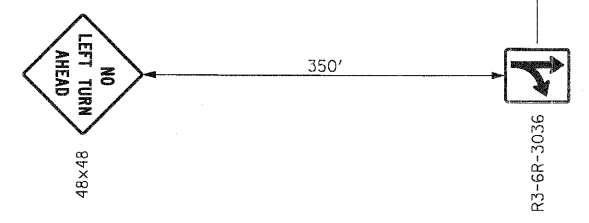
US 30 AT SCHOOLHOUSE RD.

PAVEMENT MARKING KEY

- 1 4" SOLID - WHITE
- 2 12" SOLID - YELLOW
- 3 4" SOLID - YELLOW @ 11" C-C
- 4 24" STOP BAR - WHITE
- 5 12" SOLID - WHITE
- 6 6" SOLID - WHITE
- 7 6"-6'/2' DASH-WHITE
- 8 4" SOLID - YELLOW
- 9 4" 30'/10' DASH WHITE

LEGEND

- ARROW BOARD
- TEMPORARY PAVEMENT
- TEMPORARY PAVEMENT CONSTRUCTED IN EARLIER STAGE
- CONSTRUCTION ZONE
- TYPE III BARRICADE WITH FLASHING LIGHTS
- TYPE II BARRICADE
- DRUM OR VERTICAL BARRICADE
- DIRECTION INDICATOR BARRICADE WITH STEADY BURN MONODIRECTIONAL LIGHT
- FLASHING LIGHT



REVISIONS	
NAME	DATE

ILLINOIS DEPARTMENT OF TRANSPORTATION
MAINTENANCE OF TRAFFIC
 STAGE 1A
 U.S. RTE. 30 (LINCOLN HIGHWAY)
 AT BRISBANE RD, SCHOOLHOUSE RD
 SCALE : 1" = 50'
 DATE : / /
 DRAWN BY : BAE
 CHECKED BY : GB