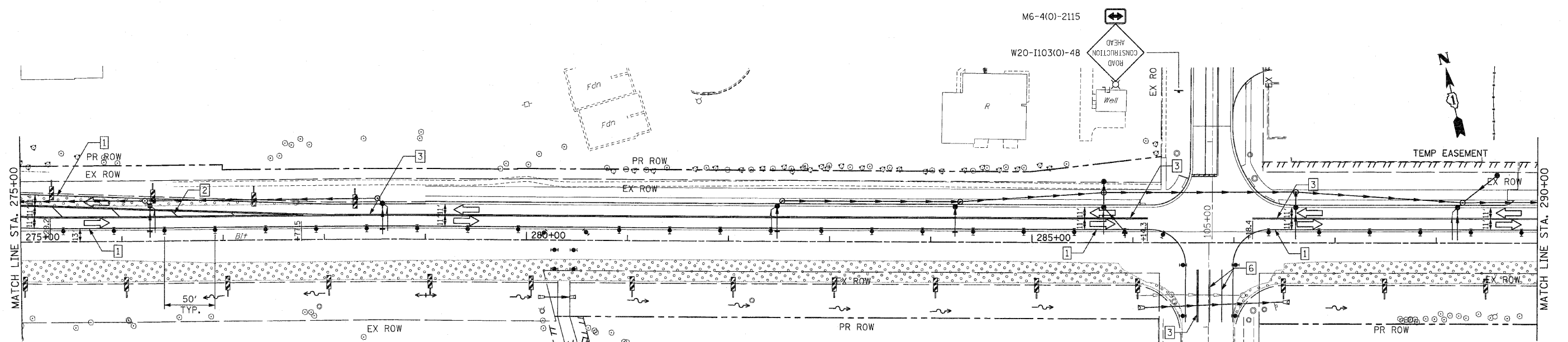
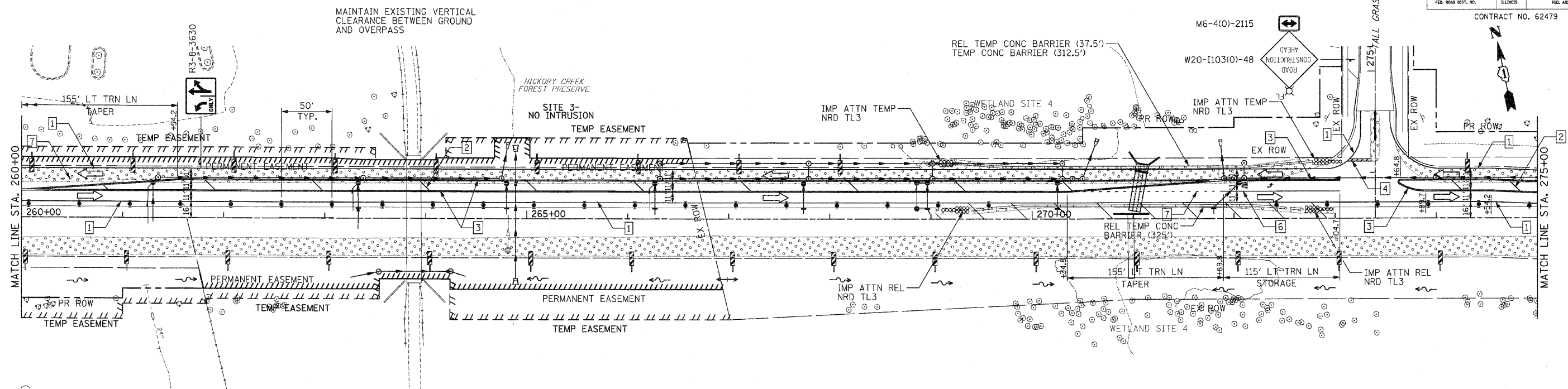


F.A.P. RTE.	SECTION	COUNTY	TOTAL SHEETS	SHEET NO.
353	(12&13)WRS-3	WILL	1235	156
STA. 260+00	TO STA. 290+00			
FED. ROAD DIST. NO.	ILLINOIS	FED. AID PROJECT		
CONTRACT NO. 62479				



**PAVEMENT MARKING KEY**

- 1 4" SOLID - WHITE
- 2 12" SOLID - YELLOW
- 3 4" SOLID - YELLOW @ 11" C-C
- 4 24" STOP BAR - WHITE
- 5 12" SOLID - WHITE
- 6 6" SOLID - WHITE
- 7 6"-6 1/2" DASH-WHITE
- 8 4" SOLID - YELLOW
- 9 4" 30'/10' DASH WHITE

- LEGEND**
- ARROW BOARD
  - ▨ TEMPORARY PAVEMENT
  - ▩ TEMPORARY PAVEMENT CONSTRUCTED IN EARLIER STAGE
  - ▧ CONSTRUCTION ZONE
  - 1 TYPE III BARRICADE WITH FLASHING LIGHTS
  - 2 TYPE II BARRICADE
  - 3 DRUM OR VERTICAL BARRICADE
  - 4 DIRECTION INDICATOR BARRICADE WITH STEADY BURN MONODIRECTIONAL LIGHT
  - 5 FLASHING LIGHT

REVISIONS	
NAME	DATE

ILLINOIS DEPARTMENT OF TRANSPORTATION  
**MAINTENANCE OF TRAFFIC**  
 PRE-STAGE 2  
 U.S. RTE. 30 (LINCOLN HIGHWAY)  
 STA. 260+00 TO STA. 290+00  
 SCALE : 1" = 50'  
 DATE : / / DRAWN BY : BAE  
 CHECKED BY : GB