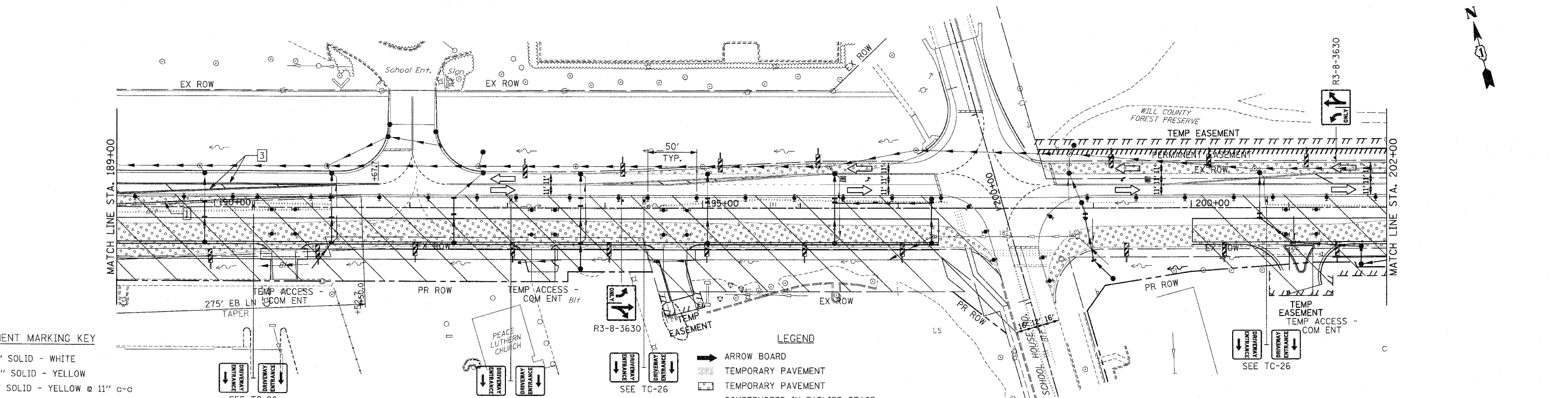
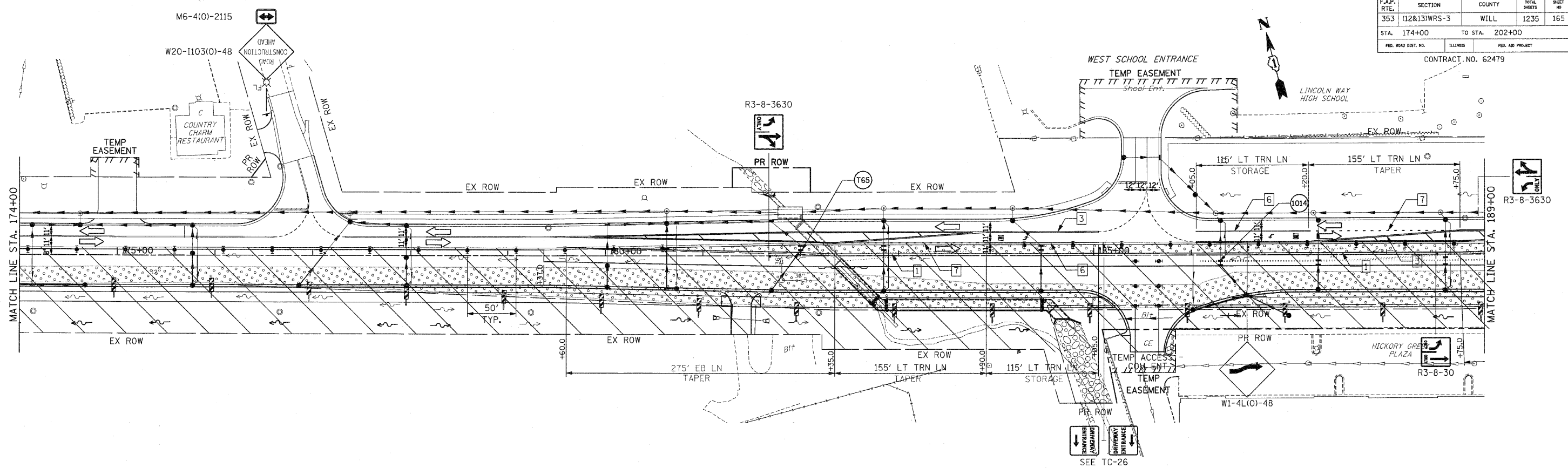


F.A.P. RTE.	SECTION	COUNTY	TOTAL SHEETS	SHEET NO.
353	(12&13)WRS-3	WILL	1235	165
STA. 174+00	TO STA. 202+00			
FED. ROAD DIST. NO.	ILLINOIS	FED. AID PROJECT		

CONTRACT NO. 62479



PAVEMENT MARKING KEY

1	4" SOLID - WHITE
2	12" SOLID - YELLOW
3	4" SOLID - YELLOW @ 11" o-o
4	24" STOP BAR - WHITE
5	12" SOLID - WHITE
6	6" SOLID - WHITE
7	6"-6'/2' DASH-WHITE
8	4" SOLID - YELLOW
9	4" 30'/10' DASH WHITE

LEGEND

[Symbol]	ARROW BOARD
[Symbol]	TEMPORARY PAVEMENT
[Symbol]	TEMPORARY PAVEMENT CONSTRUCTED IN EARLIER STAGE
[Symbol]	CONSTRUCTION ZONE
[Symbol]	TYPE III BARRICADE WITH FLASHING LIGHTS
[Symbol]	TYPE II BARRICADE
[Symbol]	DRUM OR VERTICAL BARRICADE
[Symbol]	DIRECTION INDICATOR BARRICADE WITH STEADY BURN MONODIRECTIONAL LIGHT
[Symbol]	FLASHING LIGHT
[Symbol]	TEMPORARY STRUCTURE NUMBER

REVISIONS		ILLINOIS DEPARTMENT OF TRANSPORTATION MAINTENANCE OF TRAFFIC STAGE 2 U.S. RTE. 30 (LINCOLN HIGHWAY) STA. 174+00 TO STA. 202+00 SCALE: 1" = 50' DATE: / /
NAME	DATE	
		DRAWN BY: BAE CHECKED BY: GB