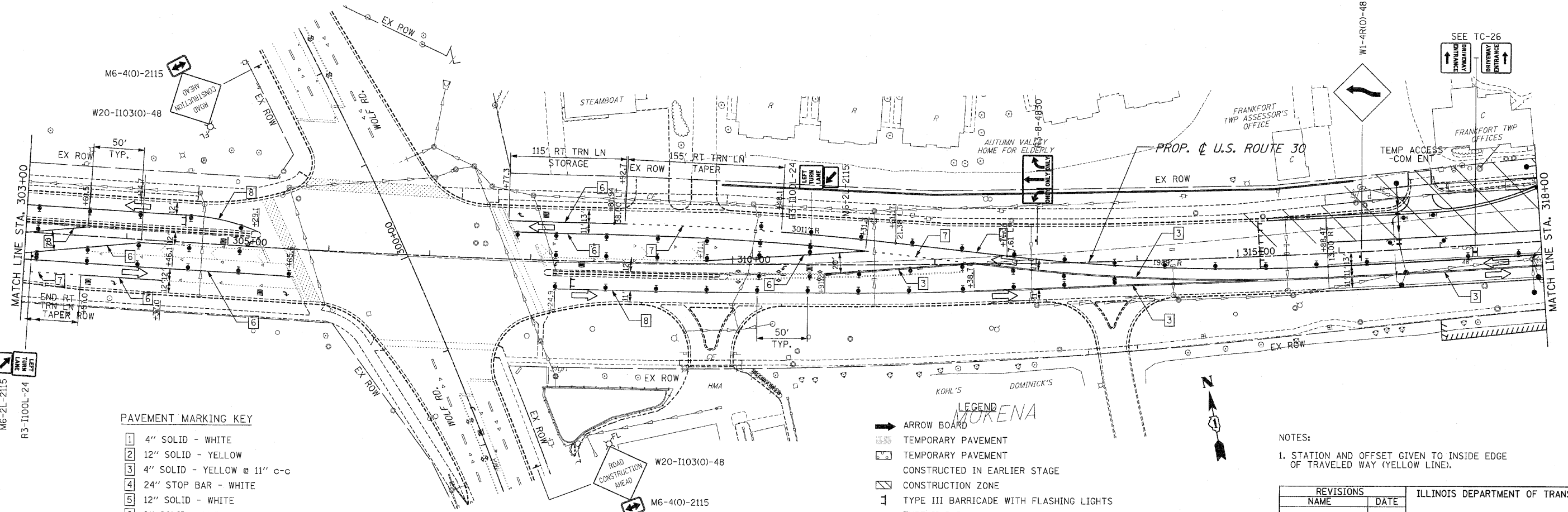
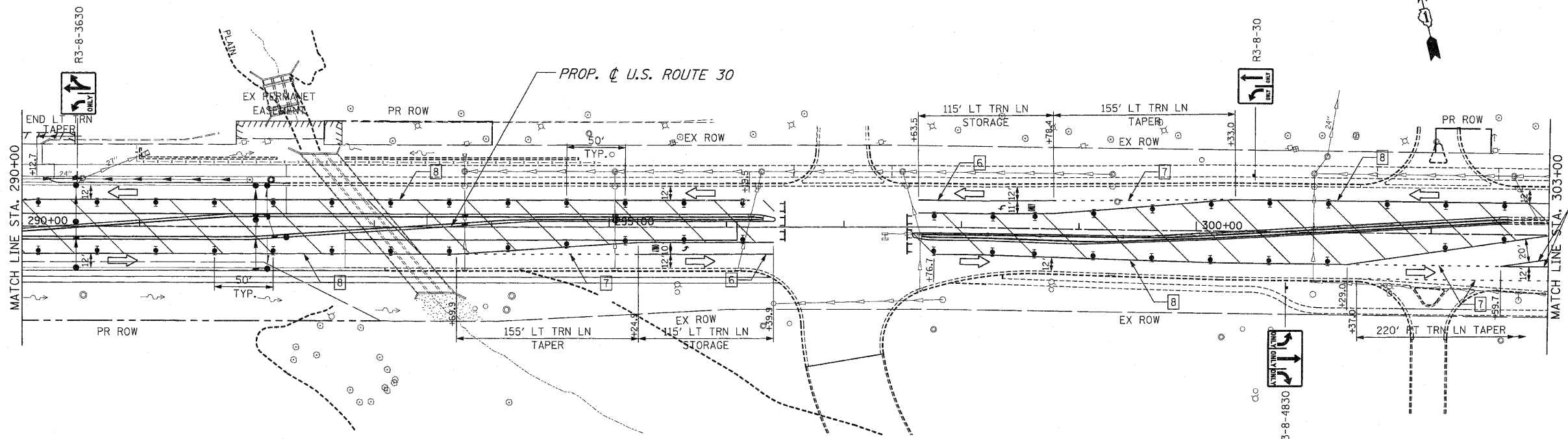


F.A.P. RTE.	SECTION	COUNTY	TOTAL SHEETS	SHEET NO.
353	(12&13)WRS-3	WILL	1235	184
STA. 290+00		TO STA. 318+00		
FED. ROAD DIST. NO.	ILLINOIS	FED. AID PROJECT		

CONTRACT NO. 62479



**PAVEMENT MARKING KEY**

1	4" SOLID - WHITE
2	12" SOLID - YELLOW
3	4" SOLID - YELLOW @ 11" C-C
4	24" STOP BAR - WHITE
5	12" SOLID - WHITE
6	6" SOLID - WHITE
7	6"-6'/2" DASH-WHITE
8	4" SOLID - YELLOW
9	4" 30'/10" DASH WHITE

- LEGEND**
- ➔ ARROW BOARD
  - ▨ TEMPORARY PAVEMENT
  - ▨ TEMPORARY PAVEMENT CONSTRUCTED IN EARLIER STAGE
  - ▨ CONSTRUCTION ZONE
  - ⊥ TYPE III BARRICADE WITH FLASHING LIGHTS
  - ⊥ TYPE II BARRICADE
  - ⊥ DRUM OR VERTICAL BARRICADE
  - ⊥ DIRECTION INDICATOR BARRICADE WITH STEADY BURN MONODIRECTIONAL LIGHT
  - ⊥ FLASHING LIGHT

**NOTES:**  
 1. STATION AND OFFSET GIVEN TO INSIDE EDGE OF TRAVELED WAY (YELLOW LINE).

REVISIONS		ILLINOIS DEPARTMENT OF TRANSPORTATION
NAME	DATE	
		<b>MAINTENANCE OF TRAFFIC</b> STAGE 3 U.S. RTE. 30 (LINCOLN HIGHWAY) STA. 290+00 TO STA. 318+00 SCALE : 1" = 50' DATE : / / DRAWN BY : BAE CHECKED BY : GB