

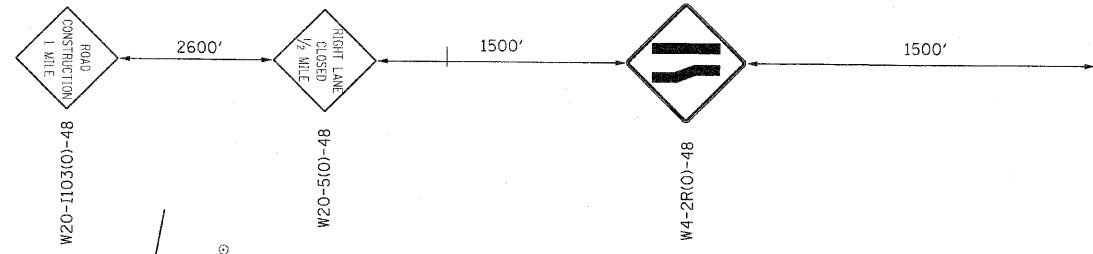
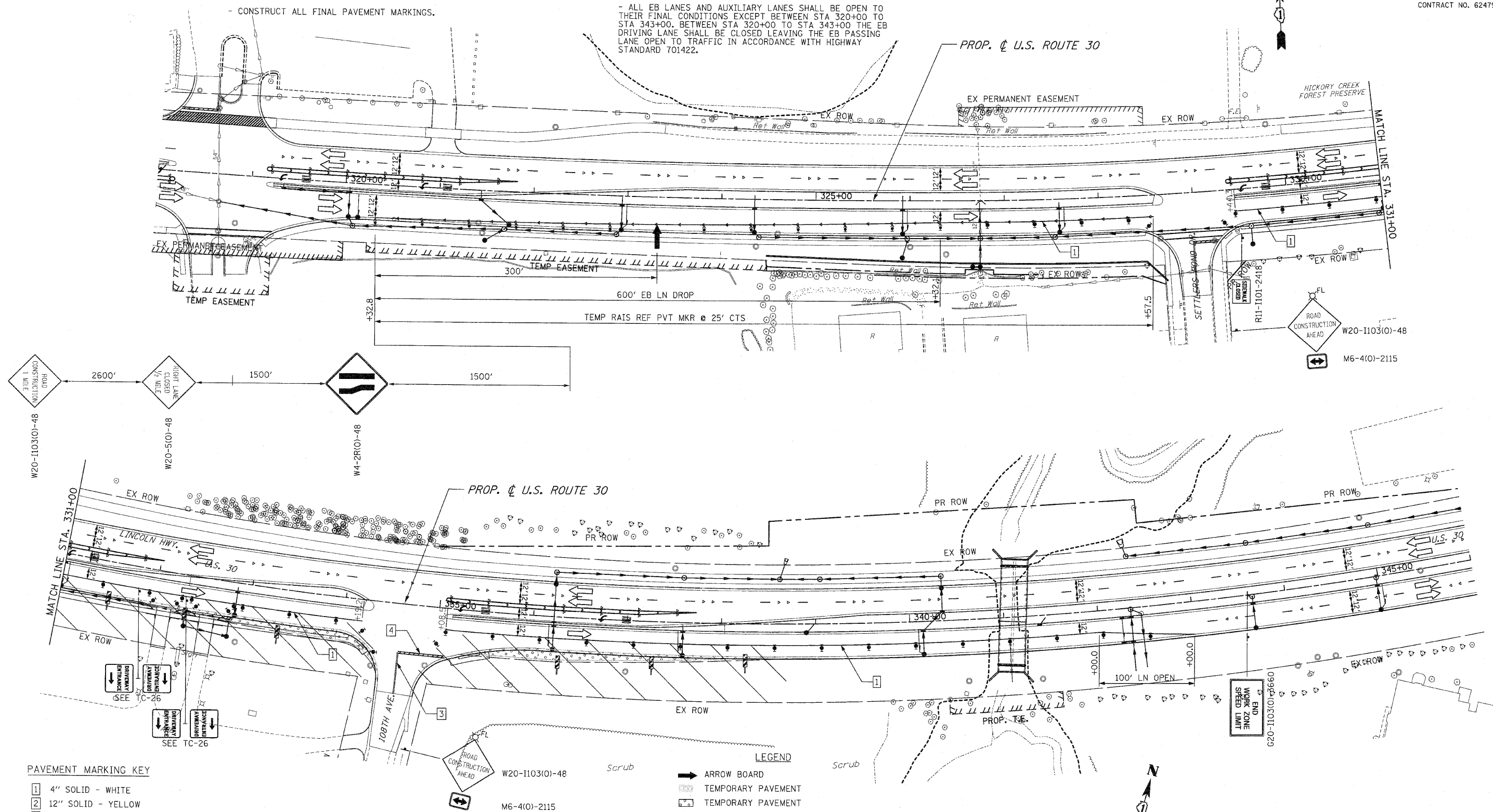
F.A.P. RTE.	SECTION	COUNTY	TOTAL SHEETS	SHEET NO.
353	(12&13)WRS-3	WILL.	1235	200
STA. 318+00 TO STA. 346+00		ILLINOIS		
FED. ROAD DIST. NO.		FED. AID PROJECT		CONTRACT NO. 62479

STAGE 4A CONSTRUCTION

- CONSTRUCT CURB AND GUTTER, SIDEWALK AND DRIVES WHERE TEMPORARY PAVEMENT FOR STAGE 3 TRAFFIC IS LOCATED BETWEEN SETTLERS POND DR. AND CULVERT "G".
 - CONSTRUCT ALL FINAL PAVEMENT MARKINGS.

STAGE 4A TRAFFIC

- ALL WB LANES AND AUXILIARY LANES SHALL BE OPEN TO THEIR FINAL CONDITIONS.
 - ALL EB LANES AND AUXILIARY LANES SHALL BE OPEN TO THEIR FINAL CONDITIONS EXCEPT BETWEEN STA 320+00 TO STA 343+00. BETWEEN STA 320+00 TO STA 343+00 THE EB DRIVING LANE SHALL BE CLOSED LEAVING THE EB PASSING LANE OPEN TO TRAFFIC IN ACCORDANCE WITH HIGHWAY STANDARD 701422.



PAVEMENT MARKING KEY

1	4" SOLID - WHITE
2	12" SOLID - YELLOW
3	4" SOLID - YELLOW @ 11" c-c
4	24" STOP BAR - WHITE
5	12" SOLID - WHITE
6	6" SOLID - WHITE
7	6"-6 1/2' DASH-WHITE
8	4" SOLID - YELLOW
9	4" 30'/10' DASH WHITE

LEGEND

→	ARROW BOARD
▨	TEMPORARY PAVEMENT
▩	TEMPORARY PAVEMENT CONSTRUCTED IN EARLIER STAGE
▭	CONSTRUCTION ZONE
⌈	TYPE III BARRICADE WITH FLASHING LIGHTS
⌋	TYPE II BARRICADE
⊞	DRUM OR VERTICAL BARRICADE
→	DIRECTION INDICATOR BARRICADE WITH STEADY BURN MONODIRECTIONAL LIGHT
⊞	FLASHING LIGHT

REVISIONS

NAME	DATE

ILLINOIS DEPARTMENT OF TRANSPORTATION
MAINTENANCE OF TRAFFIC
 STAGE 4A
 U.S. RTE. 30 (LINCOLN HWY)
 STA. 318+00 TO STA. 346+00
 SCALE : 1" = 50' DRAWN BY : BAE
 DATE : 10/12/2010 CHECKED BY : GB