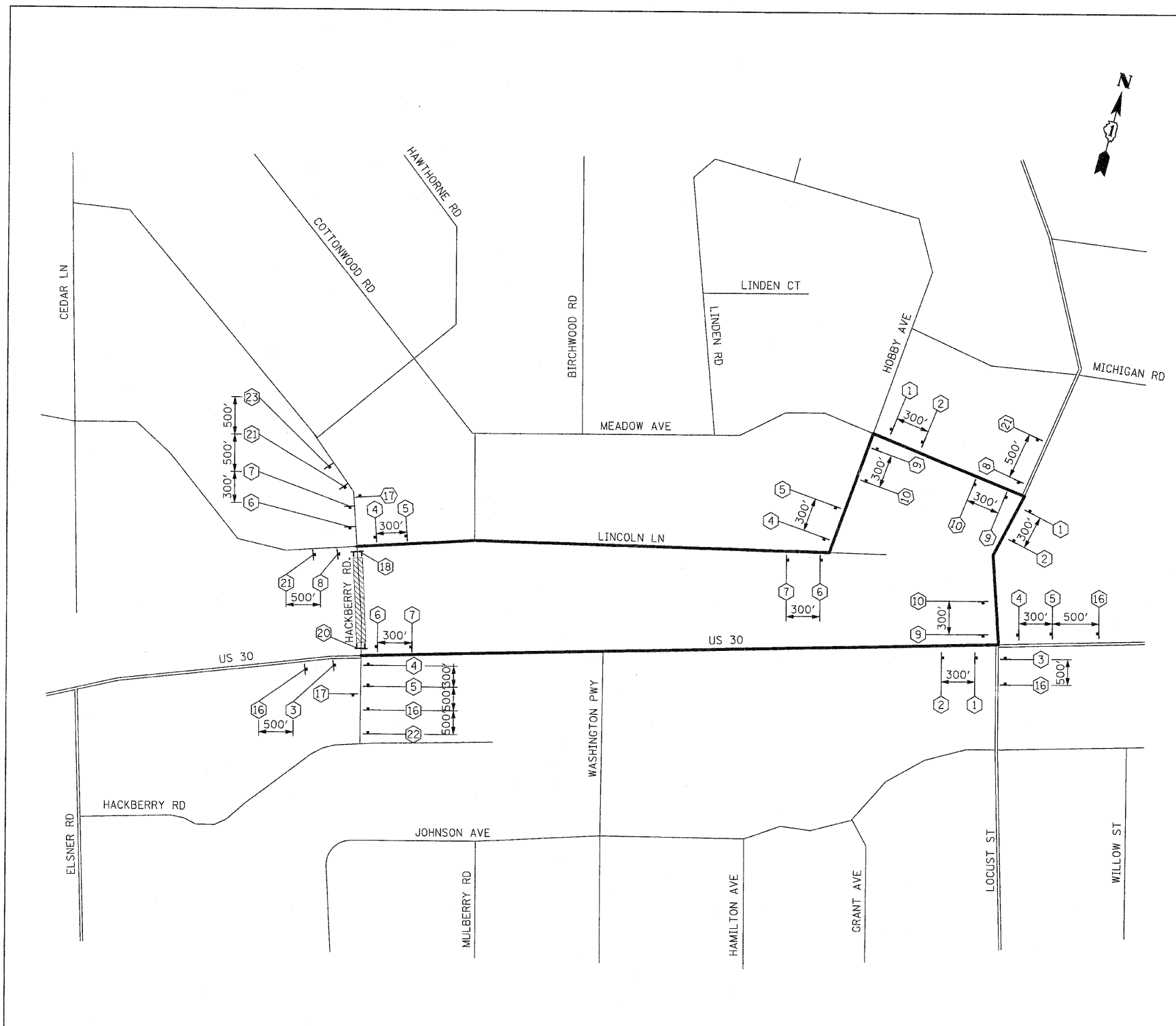


F.A.P. RTE.	SECTION	COUNTY	TOTAL SHEETS	SHEET NO.
353	(12&13)WRS-3	WILL	1235	222
STA.	TO STA.		CONTRACT NO. 62479	
FED. ROAD DIST. NO.	ILLINOIS	FED. AID PROJECT		

**SIGN LEGEND**

1	M4-8-2412 M3-1-2412 SEE DETAIL M6-1L-2115	10	M4-8-2412 M3-3-2412 SEE DETAIL M5-1R-2115	17	M4-8A-2418
2	M4-8-2412 M3-1-2412 SEE DETAIL M5-1L-2115	11	W20-3-4848	18	R11-4-6030 M4-10L-4818 MIN. 5 EACH
3	M4-8-2412 M3-1-2412 SEE DETAIL M6-3-2115	12	W20-3-4848	19	R11-2-4830 MIN. 5 EACH
4	M4-8-2412 M3-1-2412 SEE DETAIL M6-1R-2115	13	W20-3-4848	20	R11-4-6030 M4-10R-4818 MIN. 5 EACH
5	M4-8-2412 M3-1-2412 SEE DETAIL M5-1R-2115	14	W20-2-4848	21	W20-2-4848
6	M4-8-2412 M3-3-2412 SEE DETAIL M6-1L-2115	15	W20-3-4848		W20-2-4848
7	M4-8-2412 M3-3-2412 SEE DETAIL M5-1L-2115	16	W20-2-4848		W20-2-4848
8	M4-8-2412 M3-3-2412 SEE DETAIL M6-3-2115	22	W20-3-4848		W20-3-4848
9	M4-8-2412 M3-3-2412 SEE DETAIL M6-1R-2115		W20-3-4848		W20-3-4848



**LEGEND**

- DETOUR ROUTE
- PARTIALLY CLOSED ROADWAY
- COMPLETELY CLOSED ROADWAY
- MAJOR STREET
- MINOR STREET
- TYPE A MONODIRECTIONAL FLASHING LIGHT
- TYPE III BARRICADE
- SIGN

**SIGN DETAIL**

4" BLACK LETTERS ON ORANGE REFLECTIVE BACKGROUND - 36" x 18"

REVISIONS		ILLINOIS DEPARTMENT OF TRANSPORTATION
NAME	DATE	
		<b>DETOUR PLAN STAGE 1</b> <b>HACKBERRY RD.</b>  SCALE : 1" = NTS    DRAWN BY : BEC DATE : / /            CHECKED BY : GB