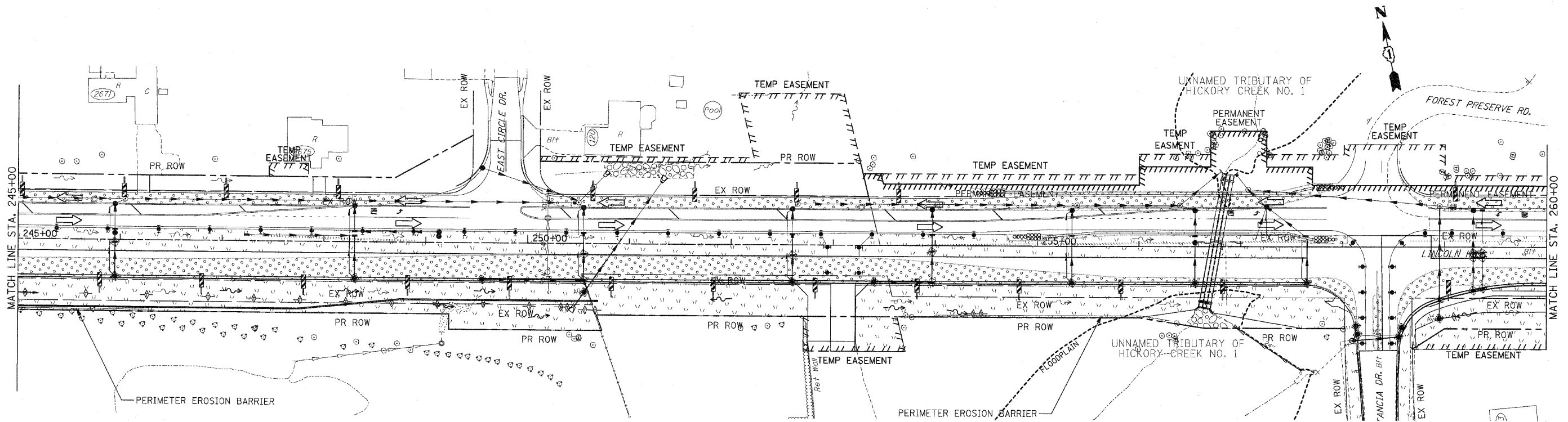
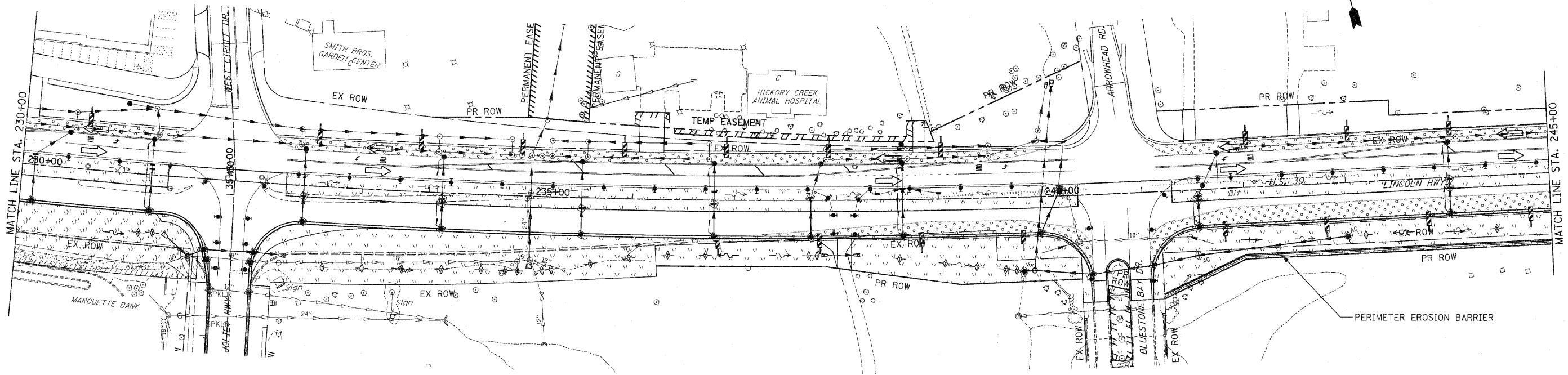


|                     |              |                  |              |           |
|---------------------|--------------|------------------|--------------|-----------|
| F.A.P. RTE.         | SECTION      | COUNTY           | TOTAL SHEETS | SHEET NO. |
| 353                 | (12&13)WRS-3 | WILL             | 1235         | 261       |
| STA. 230+00         |              | TO STA. 260+00   |              |           |
| FED. ROAD DIST. NO. | ILLINOIS     | FED. AID PROJECT |              |           |

CONTRACT NO. 62479



NOTES:

1. DRAINAGE STRUCTURE INLET FILTERS ARE TO BE PROVIDED AND MAINTAINED FOR ALL INLETS, CATCH BASINS AND DRAINAGE STRUCTURES. PAY ITEMS AND SPECIAL PROVISIONS HAVE BEEN INCLUDED FOR THIS WORK.
2. EROSION CONTROL BLANKET SHALL BE USED AT ALL LOCATIONS WHERE TEMPORARY SEEDING IS USED.

EROSION CONTROL SYMBOLS

|  |  |
|--|--|
|  | PERIMETER EROSION BARRIER                        |
|  | TEMPORARY FENCE                                  |
|  | ABOVE GRADE INLET FILTER                         |
|  | INLET FILTER                                     |
|  | TEMPORARY DITCH CHECK                            |
|  | RIPRAP   |
|  | TEMPORARY SEEDING AND EROSION CONTROL BLANKET    |
|  | CONSTRUCTION WORK ZONE                           |
|  | TEMPORARY PAVEMENT                               |
|  | TEMPORARY PAVEMENT CONSTRUCTED IN EARLIER STAGES |

| REVISIONS |      |
|-----------|------|
| NAME      | DATE |
|           |      |
|           |      |
|           |      |
|           |      |
|           |      |

ILLINOIS DEPARTMENT OF TRANSPORTATION  
**EROSION CONTROL PLANS**  
 STAGE 2  
 U.S. RTE. 30 (LINCOLN HIGHWAY)  
 STA. 230+00 TO STA. 260+00  
 SCALE : 1" = 50'  
 DATE : / / DRAWN BY : BAE  
 CHECKED BY : GB