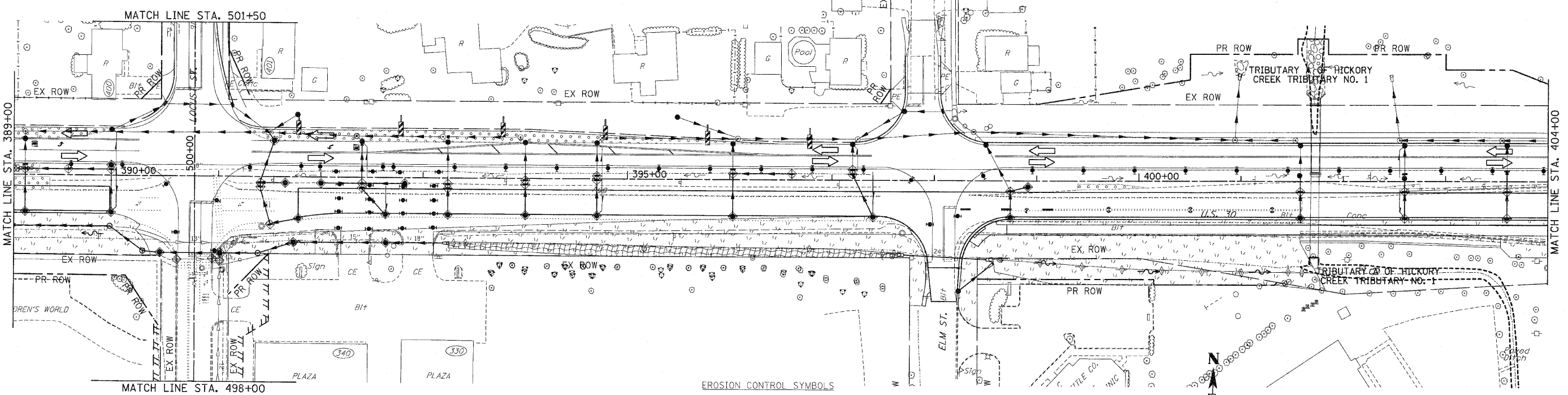
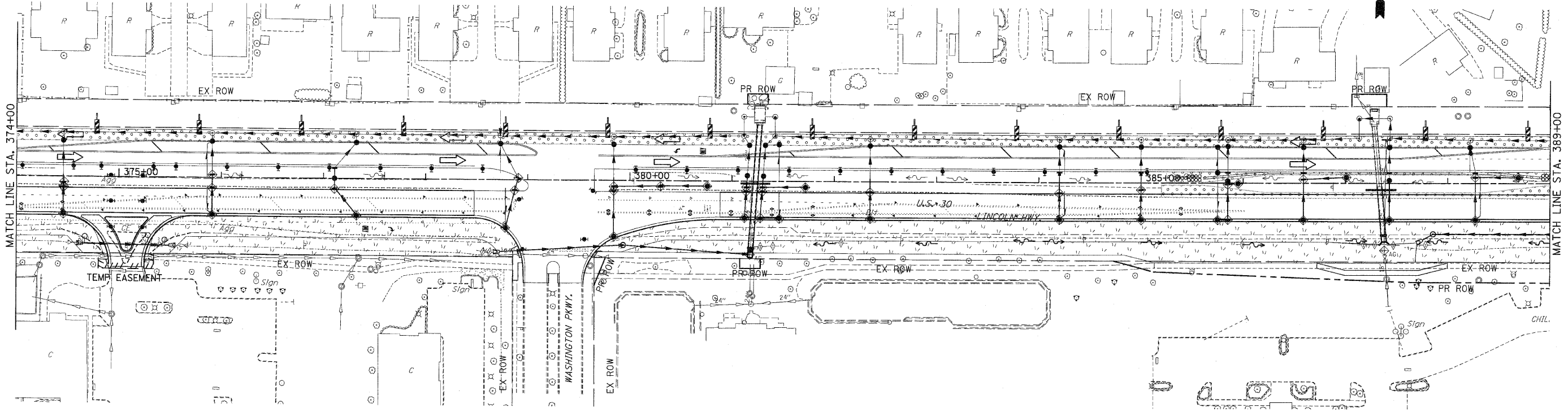


F.A.P. RTE.	SECTION	COUNTY	TOTAL SHEETS	SHEET NO.
353	(12&13)WRS-3	WILL	1235	266
STA. 374+00	TO STA. 404+00			
FED. ROAD DIST. NO.	ALIGNMS	FED. AID PROJECT		
		CONTRACT NO. 62479		



- EROSION CONTROL SYMBOLS**
- PERIMETER EROSION BARRIER
 - TEMPORARY FENCE
 - ABOVE GRADE INLET FILTER
 - INLET FILTER
 - TEMPORARY DITCH CHECK
 - RIPRAP
 - TEMPORARY SEEDING AND EROSION CONTROL BLANKET
 - CONSTRUCTION WORK ZONE
 - TEMPORARY PAVEMENT
 - TEMPORARY PAVEMENT CONSTRUCTED IN EARLIER STAGES

- NOTES:**
- DRAINAGE STRUCTURE INLET FILTERS ARE TO BE PROVIDED AND MAINTAINED FOR ALL INLETS, CATCH BASINS AND DRAINAGE STRUCTURES. PAY ITEMS AND SPECIAL PROVISIONS HAVE BEEN INCLUDED FOR THIS WORK.
 - EROSION CONTROL BLANKET SHALL BE USED AT ALL LOCATIONS WHERE TEMPORARY SEEDING IS USED.

REVISIONS		ILLINOIS DEPARTMENT OF TRANSPORTATION
NAME	DATE	
		EROSION CONTROL PLANS STAGE 2 U.S. RTE. 30 (LINCOLN HIGHWAY) STA. 374+00 TO STA. 404+00 SCALE : 1" = 50' DATE : / /