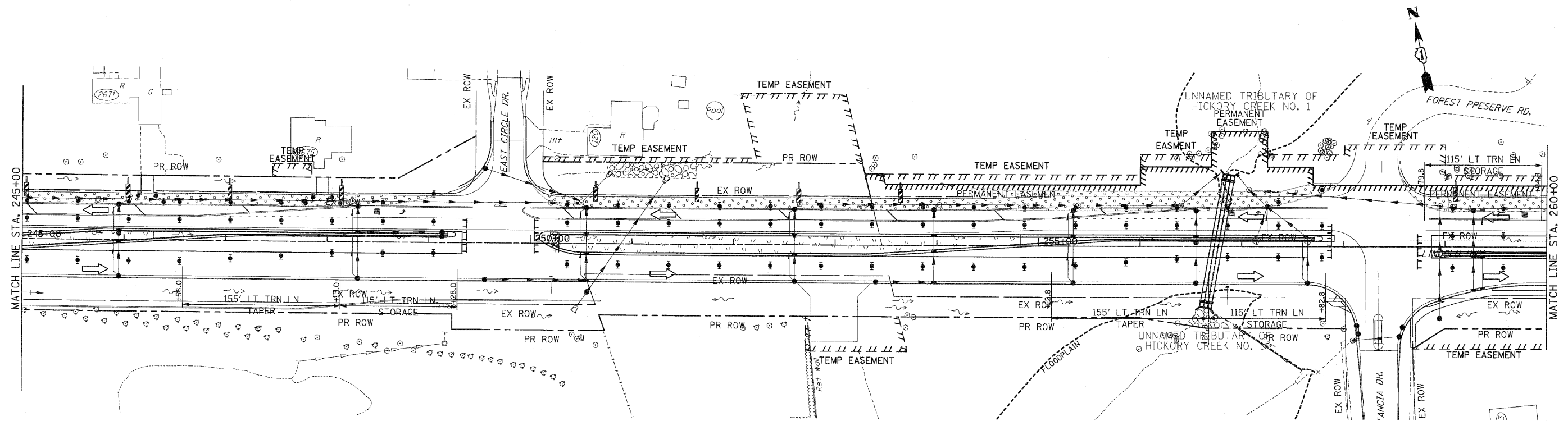
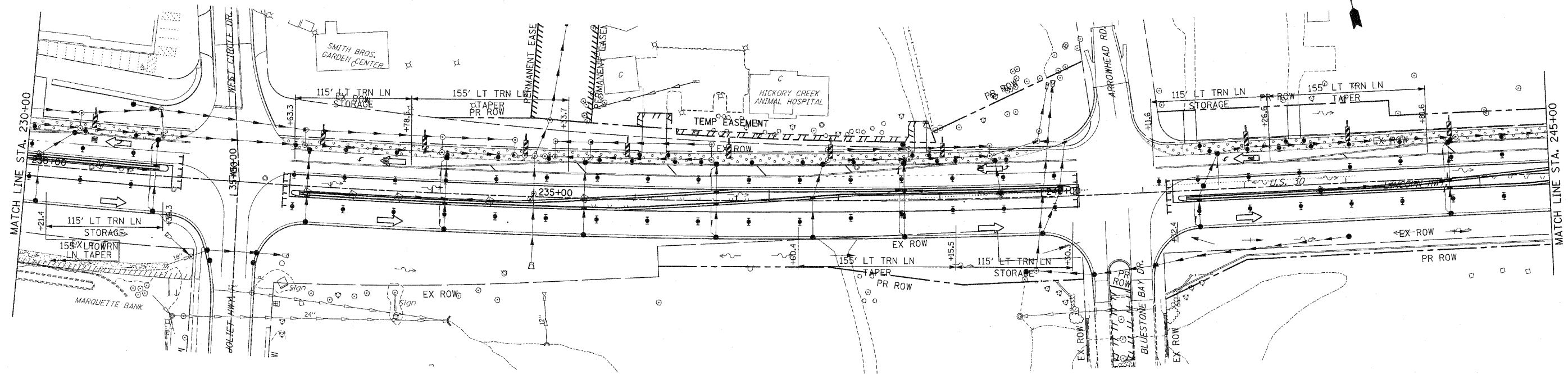


F.A.P. RTE.	SECTION	COUNTY	TOTAL SHEETS	SHEET NO.
353	(12&13)WRS-3	WILL	1235	274
STA. 230+00	TO STA. 260+00			
FED. ROAD DIST. NO.	ILLINOIS	FED. AID PROJECT		

CONTRACT NO. 62479



- NOTES:
- DRAINAGE STRUCTURE INLET FILTERS ARE TO BE PROVIDED AND MAINTAINED FOR ALL INLETS, CATCH BASINS AND DRAINAGE STRUCTURES. PAY ITEMS AND SPECIAL PROVISIONS HAVE BEEN INCLUDED FOR THIS WORK.
 - EROSION CONTROL BLANKET SHALL BE USED AT ALL LOCATIONS WHERE TEMPORARY SEEDING IS USED.

EROSION CONTROL SYMBOLS

	PERIMETER EROSION BARRIER
	TEMPORARY FENCE
	ABOVE GRADE INLET FILTER
	INLET FILTER
	TEMPORARY DITCH CHECK
	RIPRAP
	TEMPORARY SEEDING AND EROSION CONTROL BLANKET
	CONSTRUCTION WORK ZONE
	TEMPORARY PAVEMENT
	TEMPORARY PAVEMENT CONSTRUCTED IN EARLIER STAGES

REVISIONS	
NAME	DATE

ILLINOIS DEPARTMENT OF TRANSPORTATION

EROSION CONTROL PLANS

STAGE 3

U.S. RTE. 30 (LINCOLN HIGHWAY)

STA. 230+00 TO STA. 260+00

SCALE : 1" = 50'

DATE : / /

DRAWN BY : BAE

CHECKED BY : GB