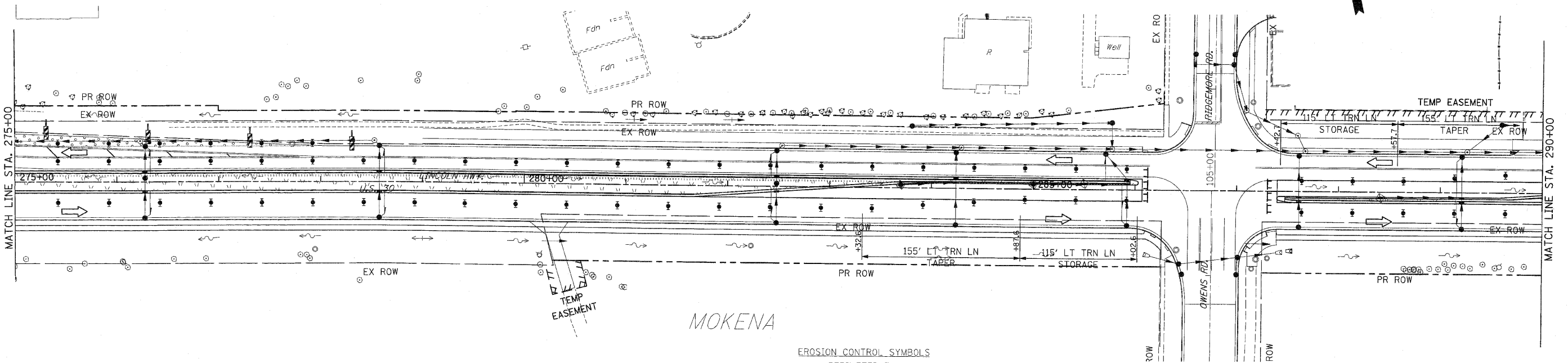
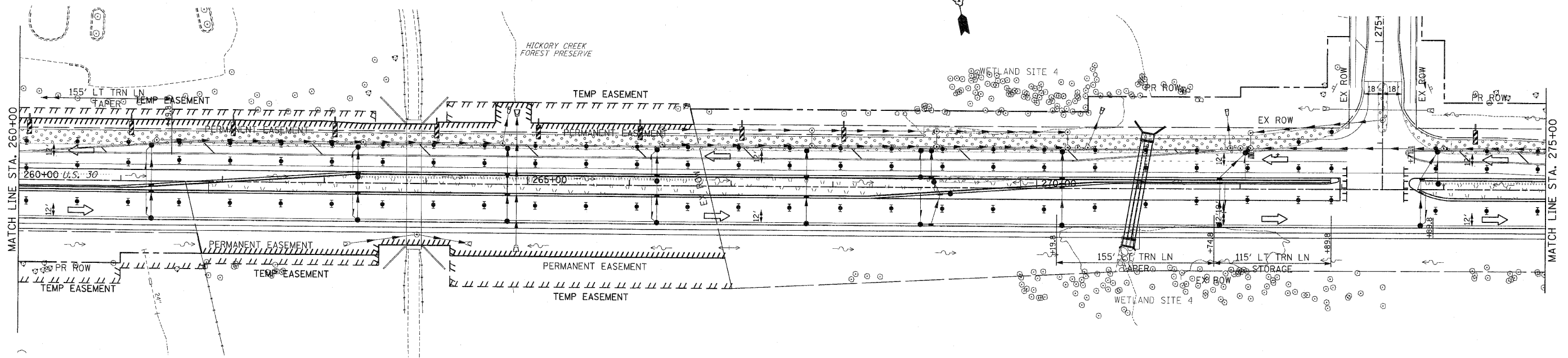


F.A.P. RTE.	SECTION	COUNTY	TOTAL SHEETS	SHEET NO.
353	(12&13)WRS-3	WILL	1235	275
STA. 260+00	TO STA. 290+00			
FED. ROAD DIST. NO.	ILLINOIS	FED. AID PROJECT		

CONTRACT NO. 62479



NOTES:

1. DRAINAGE STRUCTURE INLET FILTERS ARE TO BE PROVIDED AND MAINTAINED FOR ALL INLETS, CATCH BASINS AND DRAINAGE STRUCTURES. PAY ITEMS AND SPECIAL PROVISIONS HAVE BEEN INCLUDED FOR THIS WORK.
2. EROSION CONTROL BLANKET SHALL BE USED AT ALL LOCATIONS WHERE TEMPORARY SEEDING IS USED.

EROSION CONTROL SYMBOLS

- PERIMETER EROSION BARRIER
- TEMPORARY FENCE
- ABOVE GRADE INLET FILTER
- INLET FILTER
- TEMPORARY DITCH CHECK
- RIPRAP
- TEMPORARY SEEDING AND EROSION CONTROL BLANKET
- CONSTRUCTION WORK ZONE
- TEMPORARY PAVEMENT
- TEMPORARY PAVEMENT CONSTRUCTED IN EARLIER STAGES

REVISIONS		ILLINOIS DEPARTMENT OF TRANSPORTATION
NAME	DATE	
		EROSION CONTROL PLANS STAGE 3 U.S. RTE. 30 (LINCOLN HIGHWAY) STA. 260+00 TO STA. 290+00 SCALE : 1" = 50' DATE : / /

SCALE : 1" = 50'
DATE : / /
DRAWN BY : BAE
CHECKED BY : GB