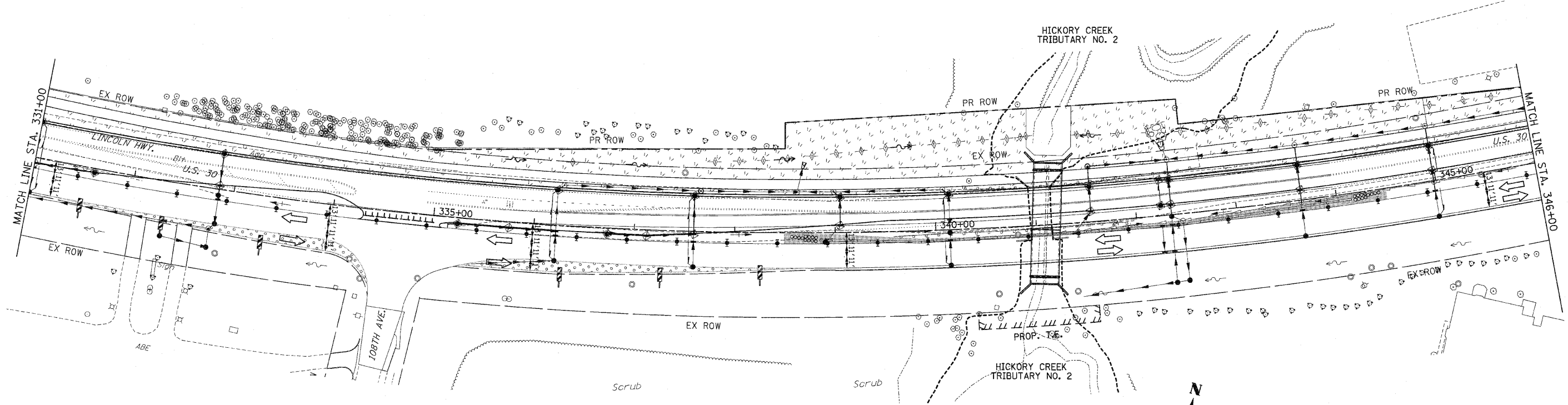
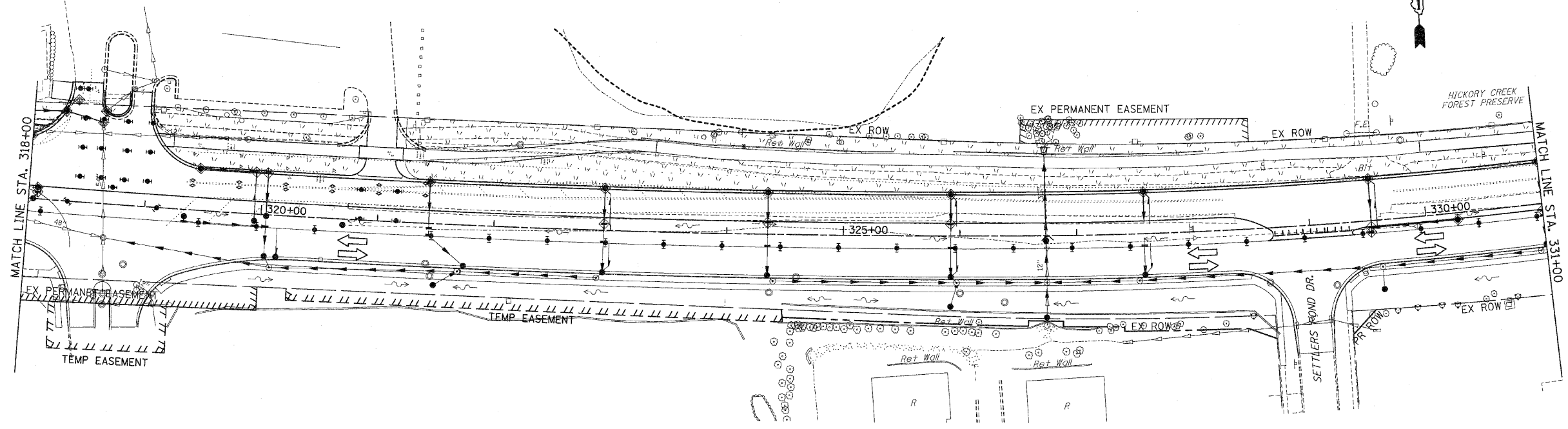


F.A.P. RTE.	SECTION	COUNTY	TOTAL SHEETS	SHEET NO
353	(12&13)WRS-3	WILL	1235	277
STA. 318+00		TO STA. 346+00		
FED. ROAD DIST. NO.	ILLINOIS	FED. AID PROJECT		
CONTRACT NO. 62479				



- EROSION CONTROL SYMBOLS**
- PERIMETER EROSION BARRIER
  - TEMPORARY FENCE
  - ABOVE GRADE INLET FILTER
  - INLET FILTER
  - TEMPORARY DITCH CHECK
  - RIPRAP
  - TEMPORARY SEEDING AND EROSION CONTROL BLANKET
  - CONSTRUCTION WORK ZONE
  - TEMPORARY PAVEMENT
  - TEMPORARY PAVEMENT CONSTRUCTED IN EARLIER STAGES

- NOTES:**
- DRAINAGE STRUCTURE INLET FILTERS ARE TO BE PROVIDED AND MAINTAINED FOR ALL INLETS, CATCH BASINS AND DRAINAGE STRUCTURES. PAY ITEMS AND SPECIAL PROVISIONS HAVE BEEN INCLUDED FOR THIS WORK.
  - EROSION CONTROL BLANKET SHALL BE USED AT ALL LOCATIONS WHERE TEMPORARY SEEDING IS USED.

REVISIONS		ILLINOIS DEPARTMENT OF TRANSPORTATION
NAME	DATE	
		<b>EROSION CONTROL PLANS</b> STAGE 3 U.S. RTE. 30 (LINCOLN HIGHWAY) STA. 318+00 TO STA. 346+00 SCALE : 1" = 50' DRAWN BY : BAE DATE : 10/12/2010 CHECKED BY : GB