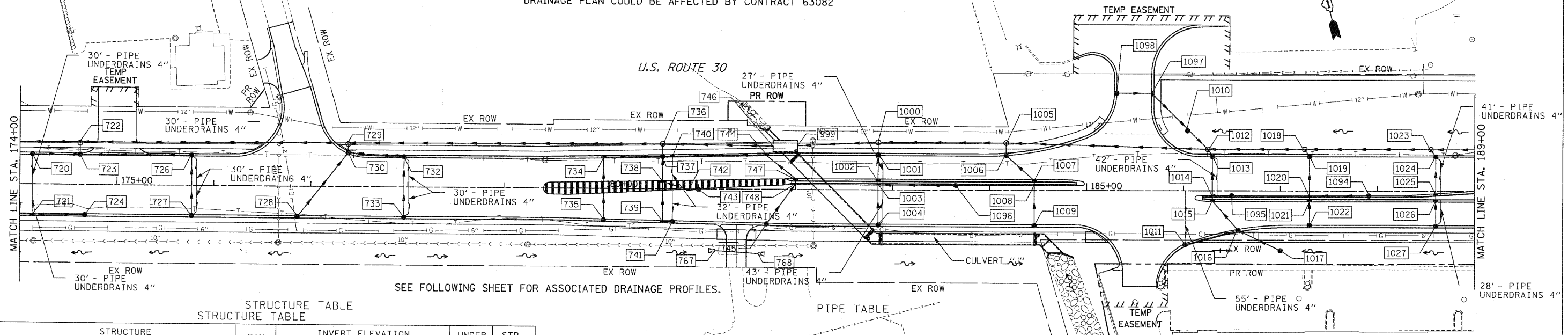


F.A.P. RTE.	SECTION	COUNTY	TOTAL SHEETS	SHEET NO.
353	(12&13)WRS-3	WILL	1235	294
STA. 174+00		TO STA. 189+00		
FED. ROAD DIST. NO.		ILLINOIS	FED. AID PROJECT	

LINCOLNWAY DR.

DRAINAGE PLAN COULD BE AFFECTED BY CONTRACT 63082



SEE FOLLOWING SHEET FOR ASSOCIATED DRAINAGE PROFILES.

STRUCTURE TABLE

STR. #	STATION	OFFSET	TYPE	FRAME	RIM ELEV	INVERT ELEVATION				UNDER DRAIN CONNECT.	STR TOP SLAB
						NORTH	EAST	SOUTH	WEST		
720	174+13.00	-30.0	CB A4	24	688.21		684.05			YES	FLAT
721	174+13.00	30.0	IN B	24	687.26		683.19			YES	TAPERED
722	174+67.00	-42.6	MH A9	1 CL	688.60		677.19			-	FLAT
723	174+67.00	-30.0	CB A4	24	688.32	682.72	682.59	677.19		-	FLAT
724	174+67.00	30.0	CB C	24	687.69			683.51		-	FLAT
726	175+77.00	-30.0	CB A4	24	688.61		683.82	683.82		YES	FLAT
727	175+77.00	30.0	CB C	24	688.58	684.42				YES	-
728	176+86.00	30.0	CB C	24	689.45	685.29				-	-
729	177+38.00	-43.3	MH A9	1 CL	690.08		677.89	684.37	677.89	-	TAPERED
730	177+38.00	-33.9	CB A4	24	689.79	684.47				-	FLAT
732	177+96.00	-30.0	CB A4	24	690.33		685.57	685.57		YES	FLAT
733	177+96.00	30.0	CB C	24	690.33	686.17				YES	-
734	180+02.00	-31.1	IN B	24	690.88		685.98	685.98		-	TAPERED
735	180+02.00	31.1	CB C	24	690.88	686.60				-	-
736	180+62.88	-44.0	MH A9	1 CL	690.84		678.73	682.01	678.73	-	TAPERED
737	180+62.88	-32.5	CB A4	24	690.64	682.12	684.84	685.74	685.37	-	FLAT
738	180+62.88	-8.3	IN B	1 OL	691.12	685.98	686.46	685.98		-	TAPERED
739	180+62.88	32.5	IN B	24	690.64	686.39				-	TAPERED
740	180+73.00	-32.5	IN B	24	690.60		684.94			YES	TAPERED
741	180+73.00	32.5	CB C	24	690.65		686.49	686.49		YES	-
742	180+89.99	2.0	IN B	1 OL	690.87		686.75			-	TAPERED
743	181+00.00	1.4	CB C	1 OL	690.82		686.85			-	-
744	181+70.00	-34.5	IN B	24	691.01		685.91	685.91		-	TAPERED
745	181+70.00	34.5	CB C	24	691.01	686.85				-	-
746	181+76.48	-44.2	BOX CULV	-	-			679.03		-	-
747	182+00.00	-11.0	IN B	24	691.72	686.29		686.29		-	TAPERED
748	182+00.00	-5.0	IN B	11V	691.40	686.35		686.35		-	TAPERED
767	181+17.00	63.0	FES 18	-	-					-	-
768	181+61.00	66.0	FES 18	-	-					-	-
999	182+01.98	-44.7	JUN BOX	-	-		682.49			-	-
1000	182+85.00	-49.0	MH A5	1 CL	692.49		683.06	687.16	683.06	-	TAPERED
1001	182+85.00	-35.0	CB A4	24	692.21	687.30		687.30		YES	FLAT
1002	182+85.00	-11.0	IN B	24	692.69	687.54		687.54		-	TAPERED
1003	182+85.00	-5.0	IN B	11V	692.37	687.60	688.10	687.60		-	TAPERED
1004	182+85.00	35.0	CB C	24	692.21	688.00				YES	TAPERED
1005	184+16.00	-49.0	MH A5	1 CL	694.47		687.99	689.46	683.95	-	TAPERED
1006	184+16.00	-35.7	CB A4	24	694.17	689.59		689.59		-	FLAT
1007	184+46.00	-11.0	IN B	24	695.11	689.98		689.98		-	TAPERED
1008	184+46.00	-5.0	IN B	11V	694.90	690.04		690.04		-	TAPERED
1009	184+46.00	35.0	CB C	24	694.63	690.44				-	TAPERED
1010	186+04.00	-61.5	CB A4	8	694.70	690.51		690.51		-	FLAT
1011	186+01.57	54.4	CB C	24	697.00	692.83				YES	FLAT
1012	186+25.00	-42.6	MH A5	1 CL	697.73	690.37	691.32	689.77		-	FLAT
1013	186+30.00	-35.0	CB A4	24	697.40	691.42		691.42		YES	TAPERED
1014	186+30.00	5.0	IN B	24	697.80	691.82	693.35	691.82		-	TAPERED
1015	186+30.00	11.0	IN B	11V	697.88	691.88		691.88		-	TAPERED
1016	186+56.22	39.4	CB A4	24	697.71	692.26		692.26		-	FLAT
1017	187+00.00	60.9	CB A4	8	697.00	692.75				-	FLAT
1018	187+25.00	-42.6	MH A5	1 CL	699.05		692.31	694.05	692.31	-	FLAT
1019	187+30.00	-35.0	CB A4	24	698.70	694.10		694.10		-	FLAT
1020	187+30.00	5.0	IN B	24	698.86	694.30	694.64	694.30		-	TAPERED
1021	187+30.00	11.0	IN B	11V	699.18	694.33		694.33		-	TAPERED
1022	187+30.00	35.0	CB C	24	698.70	694.45				-	-
1023	188+55.00	-42.6	MH A5	1 CL	700.38		693.61	695.40	693.61	-	FLAT
1024	188+60.00	-35.0	CB A4	1 OL	700.03	695.45		695.45		YES	FLAT
1025	188+60.00	2.3	IN B	24	700.24	695.64		695.64		-	TAPERED
1026	188+60.00	11.0	IN B	24	700.51	695.68		695.68		-	TAPERED
1027	188+60.00	35.0	CB C	24	700.03	695.80				YES	-
1094	187+91.00	5.0	CB C	11V	699.54			695.25		-	-
1095	186+49.00	5.0	CB C	11V	698.00			693.54		-	-
1096	189+65.00	5.0	CB C	11V	693.57			689.31		-	-
1097	189+66.80	-100.0	IN B	24	695.09			690.78	690.78	-	TAPERED
1098	189+30.80	-100.0	CB C	24	695.09		690.98			-	-

PIPE TABLE

U. S.	D. S.	U. S.	D. S.	SLOPE (FT/FT)	TYPE	STORM SEWER		DIA (INCH)	TRENCH BACKFILL (CU YD)
						LENGTH (1)	LENGTH (2)		
746	736	679.03	678.73	0.0026	2	114	78	260.4	
735	734	686.60	685.98	0.0100	2	62	12	10.8	
734	737	685.98	685.37	0.0100	2	61	12	13.1	
741	739	686.49	686.39	0.0100	2	10	12	1.3	
739	738	686.39	685.98	0.0100	2	41	12	7.1	
743	742	686.85	686.75	0.0100	1	10	12	1.3	
742	738	686.75	686.46	0.0100	2	29	12	4.4	
738	737	685.98	685.74	0.0100	2	24	12	5.2	
745	748	686.85	686.35	0.0100	2	50	12	8.6	
748	747	686.35	686.29	0.0100	2	6	12	1.4	
747	744	686.29	685.91	0.0100	2	38	12	9.0	
744	740	685.91	684.94	0.0100	2	97	12	24.9	
740	737	684.94	684.84	0.0100	2	10	12	2.8	
737	736	682.12	682.01	0.0100	2	11	15	14.5	
736	729	678.73	677.89	0.0026	2	325	78	744.6	
733	732	686.17	685.57	0.0100	2	60	12	9.1	
732	730	685.57	684.99	0.0100	2	58	12	11.3	
728	730	685.29	684.47	0.0100	2	82	12	14.2	
730	729	684.47	684.37	0.0100	2	9	12	6.6	
729	722	677.89	677.19	0.0026	2	27	78	383.7	
727	726	684.42	683.82	0.0100	2	60	12	9.1	
726	723	683.82	682.72	0.0100	2	110	12	26.0	
720	723	684.05	683.51	0.0100	2	54	12	8.2	
723	722	682.72	682.59	0.0100	2	13	15	9.4	
1028	1023	694.65	693.61	0.0080	2	130	30	74.2	
1027	1026	695.80	695.68	0.0050	2	24	12	3.6	
1026	1025	695.68	695.64	0.0050	2	9	12	1.5	
1025	1024	695.64	695.45	0.0050	2	37	12	6.4	
1024	1023	695.45	695.40	0.0050	2	9	12	1.2	
1023	1018	693.61	692.31	0.0100	2	130	30	0.0	
1022	1021	694.45	694.33	0.0050	2	24	12	3.6	
1021	1020	694.33	694.30	0.0050	2	6	12	1.0	
1094	1020	695.25	694.64	0.0100	2	61	12	8.1	
1020	1019	694.30	694.10	0.0050	2	40	12	6.9	
1019	1018	694.10	694.05	0.0050	2	9	12	1.2	
1018	1012	692.31	691.27	0.0104	2	100	30	0.0	
1017	1016	692.75	692.26	0.0100	2	49	12	20.5	
1011	1016	692.83	692.26	0.0100	2	57	12	11.0	
1016	1015	692.26	691.88	0.0100	2	39	12	10.7	
1015	1014	691.88	691.82	0.0100	2	6	12	1.9	
1095	1014	693.54	693.35	0.0100	2	19	12	2.9	
1014	1013	691.82	691.42	0.0100	2	40	12	12.8	
1013	1012	691.42	691.32	0.0100	2	9	12	1.7	
1098	1097	690.98	690.78	0.0055	2	36	12	7.7	
1097	1010	690.78	690.51	0.0050	2	22	12	7.1	
1010	1012	690.51	690.37	0.0050	2	28	15	0.0	
1012	1005	689.77	687.99	0.0085	2	209	36	113.9	
1009	1008	690.44	690.04	0.0100	2	40	12	6.1	
1008	1007	690.04	689.98	0.0100	2	6	12	1.3	
1007	1006	689.98	689.59	0.0100	2	39	12	7.5	
1006	1005	689.59	689.46	0.0100	2	13	12	4.8	
1096	1003	689.31	688.10	0.0150	2	81	12	10.6	
1005	1000	683.95	683.06	0.0068	2	131	36	223.4	
1004	1003	688.00	687.60	0.0100	2	40	12	6.1	
1003	1002	687.60	687.54	0.0100	2	6	12	1.2	
1002	1001	687.54	687.30	0.0100	2	24	12	5.2	
1001	1000	687.30	687.16	0.0100	2	14	12	8.8	
1000	999	683.06	682.49	0.0068	2	83	36	104.8	

TOTAL LENGTH FROM STRUCTURE TO STRUCTURE = STORM SEWER LENGTH