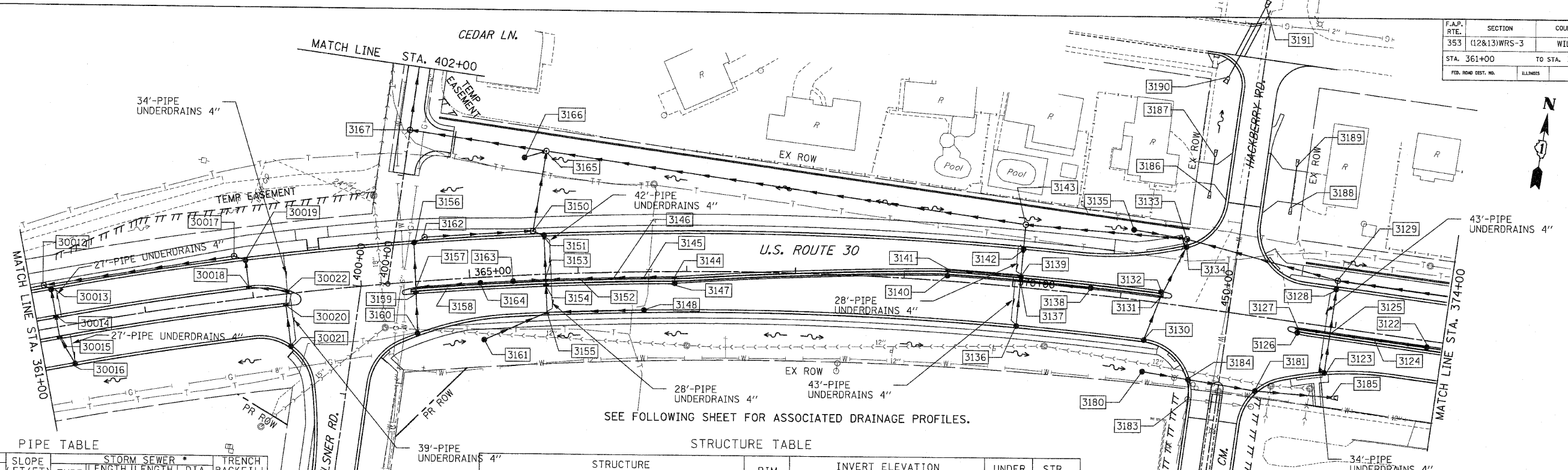


|                     |                |                  |              |           |
|---------------------|----------------|------------------|--------------|-----------|
| F.A.P. RTE.         | SECTION        | COUNTY           | TOTAL SHEETS | SHEET NO. |
| 353                 | (12&13)WRS-3   | WILL             | 1235         | 320       |
| STA. 361+00         | TO STA. 374+00 |                  |              |           |
| FED. ROAD DIST. NO. | ILLINOIS       | FED. AID PROJECT |              |           |



SEE FOLLOWING SHEET FOR ASSOCIATED DRAINAGE PROFILES.

PIPE TABLE

| STRUCTURE   | INVERT      | SLOPE   | STORM SEWER * |            | TRENCH           |       |    |        |
|-------------|-------------|---------|---------------|------------|------------------|-------|----|--------|
| U. S. D. S. | U. S. D. S. | (FT/FT) | LENGTH (1)    | LENGTH (2) | BACKFILL (CU YD) |       |    |        |
| 30021       | 30020       | 733.12  | 732.94        | 0.0050     | 2                | 36.6  | 12 | 7.1    |
| 30020       | 30022       | 732.94  | 732.86        | 0.0050     | 2                | 14.8  | 12 | 3.8    |
| 30022       | 30018       | 732.86  | 732.69        | 0.0050     | 2                | 35.6  | 12 | 9.2    |
| 30018       | 30019       | 732.69  | 732.56        | 0.0050     | 2                | 24.2  | 12 | 7.2    |
| 30019       | 30017       | 732.56  | 732.49        | 0.0050     | 2                | 13.9  | 12 | 5.0    |
| 30017       | 30012       | 732.49  | 731.44        | 0.0060     | 2                | 175.0 | 15 | 69.7   |
| 30016       | 30015       | 732.41  | 732.28        | 0.0050     | 2                | 26.4  | 12 | 4.0    |
| 30015       | 30014       | 732.28  | 732.17        | 0.0050     | 2                | 22.0  | 12 | 0.0    |
| 30014       | 30013       | 732.17  | 732.05        | 0.0050     | 2                | 24.0  | 12 | 6.2    |
| 30013       | 30012       | 732.05  | 732.01        | 0.0050     | 2                | 7.8   | 12 | 2.5    |
| 30012       | 30007       | 731.44  | 730.35        | 0.0060     | 2                | 182.0 | 18 | 74.3   |
| 3121        | 3129        | 717.47  | 717.26        | 0.0014     | 3                | 150   | 54 | 401.3  |
| 3122        | 3124        | 731.52  | 731.02        | 0.0100     | 2                | 50    | 12 | 8.7    |
| 3124        | 3125        | 731.02  | 730.62        | 0.0100     | 2                | 40    | 12 | 11.1   |
| 3123        | 3125        | 732.20  | 731.83        | 0.0100     | 2                | 37    | 12 | 5.7    |
| 3126        | 3127        | 732.74  | 732.69        | 0.0100     | 2                | 5     | 12 | 0.8    |
| 3127        | 3125        | 732.69  | 732.42        | 0.0090     | 2                | 30    | 12 | 4.6    |
| 3125        | 3128        | 730.62  | 730.22        | 0.0100     | 2                | 40    | 12 | 14.5   |
| 3128        | 3129        | 730.22  | 730.14        | 0.0100     | 4                | 8     | 12 | 6.3    |
| 3129        | 3133        | 717.26  | 717.04        | 0.0015     | 4                | 112   | 54 | 384.6  |
| 3130        | 3131        | 733.91  | 733.50        | 0.0100     | 2                | 41    | 12 | 6.3    |
| 3131        | 3132        | 733.50  | 733.44        | 0.0100     | 2                | 6     | 12 | 1.2    |
| 3132        | 3134        | 733.44  | 732.98        | 0.0100     | 2                | 46    | 12 | 12.8   |
| 3135        | 3133        | 733.14  | 732.66        | 0.0100     | 2                | 48    | 12 | 32.2   |
| 3134        | 3133        | 732.98  | 732.89        | 0.0100     | 4                | 8     | 12 | 2.3    |
| 3133        | 3143        | 717.04  | 716.82        | 0.0015     | 4                | 146   | 54 | 391.7  |
| 3136        | 3137        | 734.98  | 734.58        | 0.0100     | 2                | 40    | 12 | 6.9    |
| 3138        | 3137        | 734.75  | 734.23        | 0.0080     | 2                | 65    | 12 | 11.2   |
| 3137        | 3139        | 734.23  | 734.18        | 0.0090     | 2                | 6     | 12 | 1.5    |
| 3140        | 3141        | 735.95  | 735.89        | 0.0100     | 2                | 6     | 12 | 0.9    |
| 3141        | 3139        | 735.89  | 735.23        | 0.0100     | 2                | 66    | 12 | 11.4   |
| 3139        | 3142        | 734.18  | 733.94        | 0.0100     | 2                | 24    | 12 | 7.7    |
| 3142        | 3143        | 733.94  | 733.71        | 0.0100     | 4                | 23    | 12 | 16.5   |
| 3143        | 3165        | 716.82  | 716.21        | 0.0014     | 4                | 435   | 54 | 0.0    |
| 3144        | 3144        | 735.95  | 735.89        | 0.0100     | 2                | 6     | 12 | 0.9    |
| 3144        | 3145        | 735.89  | 735.59        | 0.0100     | 2                | 30    | 12 | 4.0    |
| 3145        | 3146        | 735.59  | 735.29        | 0.0100     | 2                | 30    | 12 | 4.6    |
| 3146        | 3152        | 735.29  | 734.99        | 0.0100     | 2                | 30    | 12 | 4.6    |
| 3152        | 3153        | 734.99  | 734.69        | 0.0100     | 2                | 30    | 12 | 5.2    |
| 3163        | 3153        | 735.02  | 734.72        | 0.0100     | 2                | 30    | 12 | 4.6    |
| 3148        | 3155        | 735.56  | 734.66        | 0.0100     | 2                | 90    | 12 | 11.9   |
| 3161        | 3155        | 734.50  | 734.18        | 0.0050     | 1                | 64    | 12 | 11.7   |
| 3155        | 3154        | 734.18  | 733.94        | 0.0100     | 2                | 24    | 12 | 6.2    |
| 3154        | 3153        | 733.94  | 733.88        | 0.0100     | 2                | 6     | 12 | 1.7    |
| 3153        | 3151        | 733.88  | 733.48        | 0.0100     | 2                | 40    | 15 | 14.1   |
| 3151        | 3150        | 733.48  | 733.37        | 0.0100     | 2                | 11    | 15 | 7.6    |
| 3160        | 3159        | 734.05  | 734.01        | 0.0010     | 2                | 36    | 12 | 6.3    |
| 3159        | 3157        | 734.01  | 734.01        | 0.0010     | 2                | 6     | 12 | 1.2    |
| 3164        | 3158        | 734.85  | 734.55        | 0.0100     | 2                | 30    | 12 | 4.0    |
| 3158        | 3157        | 734.55  | 734.27        | 0.0100     | 2                | 28    | 12 | 4.3    |
| 3157        | 3156        | 734.01  | 733.61        | 0.0100     | 2                | 40    | 12 | 10.4   |
| 3156        | 3162        | 733.61  | 733.50        | 0.0100     | 2                | 10    | 12 | 3.6    |
| 3162        | 3150        | 733.50  | 732.51        | 0.0100     | 2                | 99    | 12 | 72.3   |
| 3150        | 3165        | 732.51  | 731.77        | 0.0100     | 2                | 74    | 12 | 12.8   |
| 3166        | 3165        | 728.43  | 728.34        | 0.0050     | 2                | 19    | 12 | 5.3    |
| 3165        | 3167        | 716.21  | 716.05        | 0.0014     | 3                | 116   | 54 | 0.0    |
| 3167        | 3168        | 716.06  | 713.35        | 0.0064     | 2                | 423   | 54 | 1131.2 |
| 3168        | 3169        | 713.35  | 710.61        | 0.0064     | 2                | 430   | 54 | 667.8  |
| 3169        | 3170        | 704.34  | 702.42        | 0.0064     | 2                | 300   | 54 | 521.7  |
| 3180        | 3184        | 732.75  | 732.49        | 0.0060     | 1                | 44    | 15 | 13.3   |
| 3183        | 3184        | 735.09  | 734.73        | 0.0200     | 1                | 18    | 12 | 2.4    |
| 3184        | 3181        | 732.45  | 732.33        | 0.0020     | 1                | 29    | 12 | 7.9    |
| 3181        | 3185        | 732.33  | 732.19        | 0.0020     | 1                | 71    | 24 | 3.4    |

STRUCTURE TABLE

| STR. # | STATION   | OFFSET | TYPE   | FRAME | RIM ELEV | INVERT ELEVATION |        |        |        | UNDER DRAIN CONNECT | STR TOP SLAB |         |
|--------|-----------|--------|--------|-------|----------|------------------|--------|--------|--------|---------------------|--------------|---------|
|        |           |        |        |       |          | NORTH            | EAST   | SOUTH  | WEST   |                     |              |         |
| 30012  | 361+12.00 | -40.0  | MH A4  | 1 CL  | 738.21   |                  | 731.44 | 732.01 | 731.44 | -                   | TAPERED      |         |
| 30013  | 361+18.00 | -35.0  | CB A4  | 24    | 737.80   | 732.05           |        | 732.05 |        | YES                 | TAPERED      |         |
| 30014  | 361+18.00 | -11.0  | IN B   | 24    | 737.19   | 732.17           |        | 732.17 |        | -                   | TAPERED      |         |
| 30015  | 361+18.00 | 11.0   | IN B   | 24    | 737.19   | 732.28           |        | 732.28 |        | YES                 | TAPERED      |         |
| 30016  | 361+29.00 | 35.0   | CB C   | 24    | 736.64   | 732.41           |        |        |        | -                   | TAPERED      |         |
| 30017  | 362+87.00 | -40.0  | MH A4  | 1 CL  | 739.23   |                  |        |        |        | -                   | TAPERED      |         |
| 30018  | 362+97.00 | -11.0  | IN B   | 24    | 738.23   | 732.69           | 732.69 | 732.49 | 732.49 | -                   | TAPERED      |         |
| 30019  | 363+29.00 | -35.0  | CB A4  | 24    | 738.86   | 732.56           |        | 732.56 |        | -                   | TAPERED      |         |
| 30020  | 363+29.00 | 11.0   | IN B   | 24    | 738.42   | 732.94           |        | 732.94 |        | -                   | TAPERED      |         |
| 30021  | 363+30.00 | 47.6   | CB C   | 24    | 737.48   | 733.12           |        |        |        | YES                 | TAPERED      |         |
| 30022  | 363+31.82 | -3.5   | IN B   | 24    | 738.37   |                  |        | 732.86 | 732.86 | YES                 | TAPERED      |         |
| 3122   | 373+86.00 | 5.0    | CB C   | 11V   | 735.77   |                  |        |        |        | -                   | TAPERED      |         |
| 3123   | 372+96.00 | 42.4   | CB C   | 24    | 736.36   | 732.20           |        |        |        | YES                 | TAPERED      |         |
| 3124   | 373+36.00 | 5.0    | IN B   | 24    | 736.27   |                  | 731.02 |        |        | -                   | TAPERED      |         |
| 3125   | 372+96.00 | 5.0    | IN B   | 11V   | 736.74   | 730.62           | 730.62 | 731.83 | 731.02 | -                   | TAPERED      |         |
| 3126   | 372+66.00 | 10.0   | CB C   | 24    | 737.28   | 732.74           |        |        | 732.42 | -                   | TAPERED      |         |
| 3127   | 372+66.00 | 5.0    | IN B   | 11V   | 737.15   |                  | 732.69 | 732.69 |        | -                   | TAPERED      |         |
| 3128   | 372+96.00 | -35.0  | CB A4  | 24    | 736.91   | 730.22           |        | 730.22 |        | YES                 | TAPERED      |         |
| 3129   | 372+96.00 | -43.0  | MH A8  | 1 CL  | 737.28   |                  | 717.26 | 730.14 | 717.26 | -                   | TAPERED      |         |
| 3130   | 371+26.00 | 35.0   | CB C   | 24    | 738.08   | 733.91           |        |        |        | -                   | FLAT         |         |
| 3131   | 371+37.00 | -5.0   | IN B   | 11V   | 738.38   | 733.50           |        | 733.50 |        | -                   | TAPERED      |         |
| 3132   | 371+37.00 | -10.8  | IN B   | 24    | 738.58   | 733.44           |        | 733.44 |        | -                   | TAPERED      |         |
| 3133   | 371+53.40 | -61.3  | MH A8  | 1 CL  | 738.56   | 732.66NW         | 717.04 | 732.89 | 717.04 | -                   | FLAT         |         |
| 3134   | 371+55.00 | -53.3  | CB C   | 24    | 738.54   | 732.98           |        |        |        | -                   | TAPERED      |         |
| 3135   | 371+05.00 | -63.6  | CB C   | 8     | 737.54   |                  | 733.14 |        |        | -                   | TAPERED      |         |
| 3136   | 370+07.00 | 35.0   | CB C   | 24    | 739.27   | 734.98           |        |        |        | -                   | TAPERED      |         |
| 3137   | 370+07.00 | -5.0   | IN B   | 24    | 739.56   | 734.23           | 734.23 | 734.58 |        | YES                 | TAPERED      |         |
| 3138   | 370+72.00 | -5.0   | CB C   | 11V   | 738.91   |                  |        | 734.75 |        | -                   | TAPERED      |         |
| 3139   | 370+07.00 | -11.0  | IN B   | 11V   | 739.88   | 734.18           |        | 734.18 | 735.23 | YES                 | TAPERED      |         |
| 3140   | 369+41.00 | -5.0   | CB C   | 11V   | 740.17   | 735.95           |        |        |        | -                   | TAPERED      |         |
| 3141   | 369+41.00 | -11.0  | IN B   | 24    | 740.49   | 735.89           | 735.89 |        |        | -                   | TAPERED      |         |
| 3142   | 370+07.00 | -35.0  | CB A4  | 24    | 740.49   | 733.94           |        | 733.94 |        | -                   | TAPERED      |         |
| 3143   | 370+07.00 | -57.7  | MH A8  | 1 CL  | 738.52   |                  | 716.82 | 733.71 | 716.82 | -                   | FLAT         |         |
| 3144   | 366+90.00 | 4.9    | IN B   | 24    | 740.12   |                  |        | 735.89 |        | -                   | TAPERED      |         |
| 3145   | 366+60.00 | 5.0    | IN B   | 11V   | 739.94   |                  | 735.59 | 735.59 |        | -                   | TAPERED      |         |
| 3146   | 366+30.00 | 5.0    | IN B   | 11V   | 739.76   |                  | 735.29 | 735.29 |        | -                   | TAPERED      |         |
| 3147   | 366+90.00 | 10.7   | CB C   | 24    | 740.52   | 735.95           |        |        |        | -                   | TAPERED      |         |
| 3148   | 366+60.00 | 35.0   | CB C   | 24    | 739.73   |                  |        | 735.56 |        | -                   | TAPERED      |         |
| 3150   | 365+60.00 | -40.0  | MH A4  | 1 CL  | 740.82   | 732.51           |        | 733.37 | 732.51 | -                   | TAPERED      |         |
| 3151   | 365+70.00 | -35.0  | CB A4  | 24    | 740.43   | 733.48           |        | 733.48 |        | YES                 | TAPERED      |         |
| 3152   | 365+00.00 | 5.0    | IN B   | 11V   | 739.58   |                  | 734.99 | 734.99 |        | -                   | TAPERED      |         |
| 3153   | 365+70.00 | 5.0    | IN B   | 11V   | 739.41   |                  | 733.88 | 734.69 | 733.88 | 734.72              | -            | TAPERED |
| 3154   | 365+70.00 | 11.0   | IN B   | 24    | 739.82   | 733.94           |        | 733.94 |        | -                   | TAPERED      |         |
| 3155   | 365+70.00 | 35.0   | IN B   | 24    | 739.21   | 734.18           |        | 734.66 | 734.18 | YES                 | TAPERED      |         |
| 3157   | 364+52.00 | -35.0  | CB A4  | 24    | 739.74   |                  | 733.61 | 733.61 |        | -                   | TAPERED      |         |
| 3158   | 364+52.00 | 5.3    | IN B   | 11V   | 738.96   |                  | 734.01 | 734.27 | 734.01 | -                   | TAPERED      |         |
| 3159   | 364+80.00 | 5.0    | IN B   | 11V   | 738.99   |                  | 734.55 | 734.55 |        | -                   | TAPERED      |         |
| 3160   | 364+52.00 | 11.0   | IN B   | 24    | 739.13   | 734.01           |        | 734.01 |        | -                   | TAPERED      |         |
| 3161   | 365+10.00 | 57.0   | CB C   | 24    | 738.18   | 734.05           |        |        |        | -                   | TAPERED      |         |
| 3162   | 364+60.70 | -40.0  | MH A4  | 1 CL  | 740.24   |                  |        | 733.50 | 733.50 | -                   | TAPERED      |         |
| 3163   | 365+40.00 | -5.0   | CB C   | 11V   | 739.23   |                  |        | 735.02 |        | -                   | TAPERED      |         |
| 3164   | 365+10.00 | 5.0    | IN B   | 11V   | 739.06   |                  |        |        |        | -                   | TAPERED      |         |
| 3165   | 365+75.30 | -112.5 | MH A8  | 1 CL  | 735.50   | 728.34SW         | 716.21 | 731.77 | 716.21 | -                   | FLAT         |         |
| 3166   | 365+57.00 | -107.5 | CB A4  | 8     | 732.59   | 728.43           |        |        |        | -                   | FLAT         |         |
| 3180   | 371+30.00 | 64.0   | CB A4  | 8     | 735.70   |                  | 732.75 |        |        | -                   | FLAT         |         |
| 3181   | 372+34.50 | 67.9   | CB A5  | 24    | 736.78   |                  | 732.33 |        |        | -                   | FLAT         |         |
| 3183   | 371+74.60 | 84.0   | EX CB  | 24    | 736.60   |                  | 734.00 |        |        | -                   | FLAT         |         |
| 3184   | 371+73.90 | 66.2   | CB A5  | 24    | 737.03   |                  | 734.63 |        |        | -                   | FLAT         |         |
| 3185   | 373+05.00 | 64.0   | FES 24 | -</   |          |                  |        |        |        |                     |              |         |