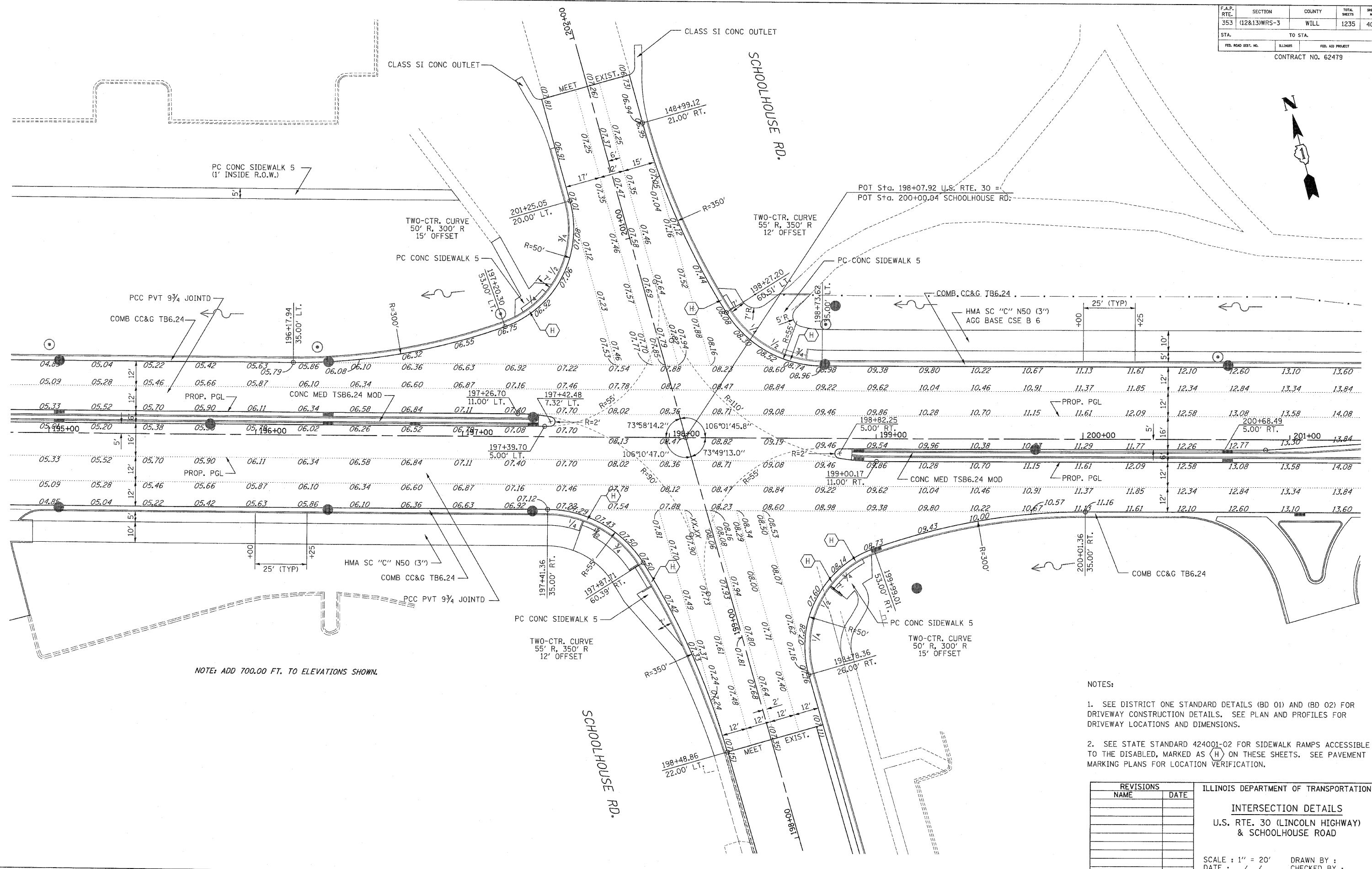


F.A.P. RTE.	SECTION	COUNTY	TOTAL SHEETS	SHEET NO.
353	(12&13)WRS-3	WILL	1235	402
STA.	TO STA.			
FED. ROAD DIST. NO.	BLINDS	FED. AID PROJECT		
CONTRACT NO. 62479				



NOTE: ADD 700.00 FT. TO ELEVATIONS SHOWN.

- NOTES:
- SEE DISTRICT ONE STANDARD DETAILS (BD 01) AND (BD 02) FOR DRIVEWAY CONSTRUCTION DETAILS. SEE PLAN AND PROFILES FOR DRIVEWAY LOCATIONS AND DIMENSIONS.
 - SEE STATE STANDARD 424001-02 FOR SIDEWALK RAMP ACCESSIBLE TO THE DISABLED, MARKED AS (H) ON THESE SHEETS. SEE PAVEMENT MARKING PLANS FOR LOCATION VERIFICATION.

REVISIONS		ILLINOIS DEPARTMENT OF TRANSPORTATION
NAME	DATE	
		INTERSECTION DETAILS U.S. RTE. 30 (LINCOLN HIGHWAY) & SCHOOLHOUSE ROAD

SCALE: 1" = 20'
 DATE: / /
 DRAWN BY: _____
 CHECKED BY: _____