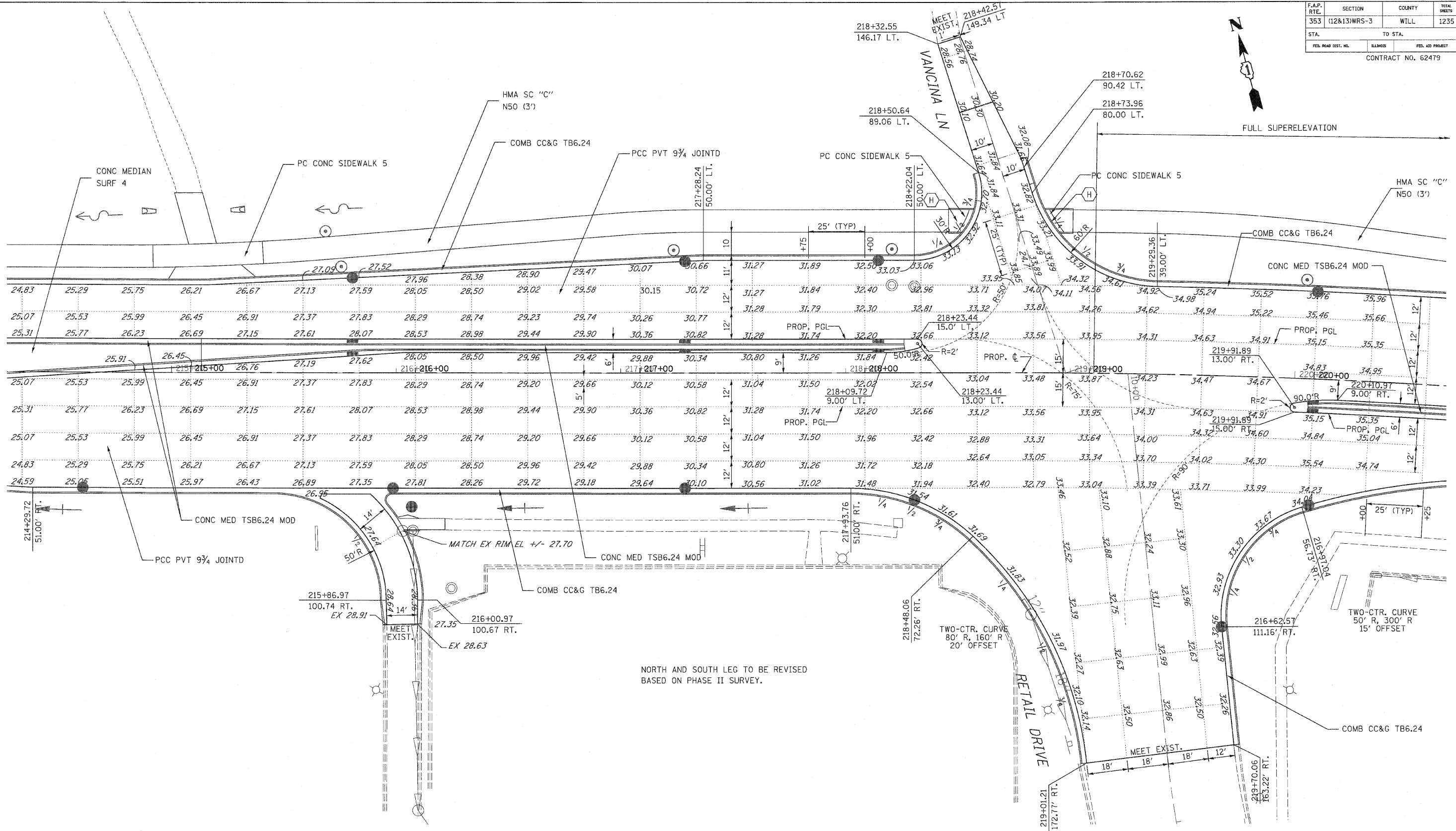


F.A.P. RTE.	SECTION	COUNTY	TOTAL SHEETS	SHEET NO.
353	(12&13)WRS-3	WILL	1235	403
STA.	TO STA.			
FED. ROAD DIST. NO.	ILLINOIS	FED. AID PROJECT		

CONTRACT NO. 62479



NOTE: ADD 700.00 FT. TO ELEVATIONS SHOWN.

NOTES:

- SEE DISTRICT ONE STANDARD DETAILS (BD 01) AND (BD 02) FOR DRIVEWAY CONSTRUCTION DETAILS. SEE PLAN AND PROFILES FOR DRIVEWAY LOCATIONS AND DIMENSIONS.
- SEE STATE STANDARD 424001-02 FOR SIDEWALK RAMPS ACCESSIBLE TO THE DISABLED, MARKED AS (H) ON THESE SHEETS. SEE PAVEMENT MARKING PLANS FOR LOCATION VERIFICATION.

REVISIONS	
NAME	DATE

ILLINOIS DEPARTMENT OF TRANSPORTATION  
**INTERSECTION DETAILS**  
 U.S. RTE. 30 (LINCOLN HIGHWAY)  
 & DRIVES 218+90 / 296+94  
 SCALE : 1" = 20'  
 DATE : / / DRAWN BY :  
 CHECKED BY :