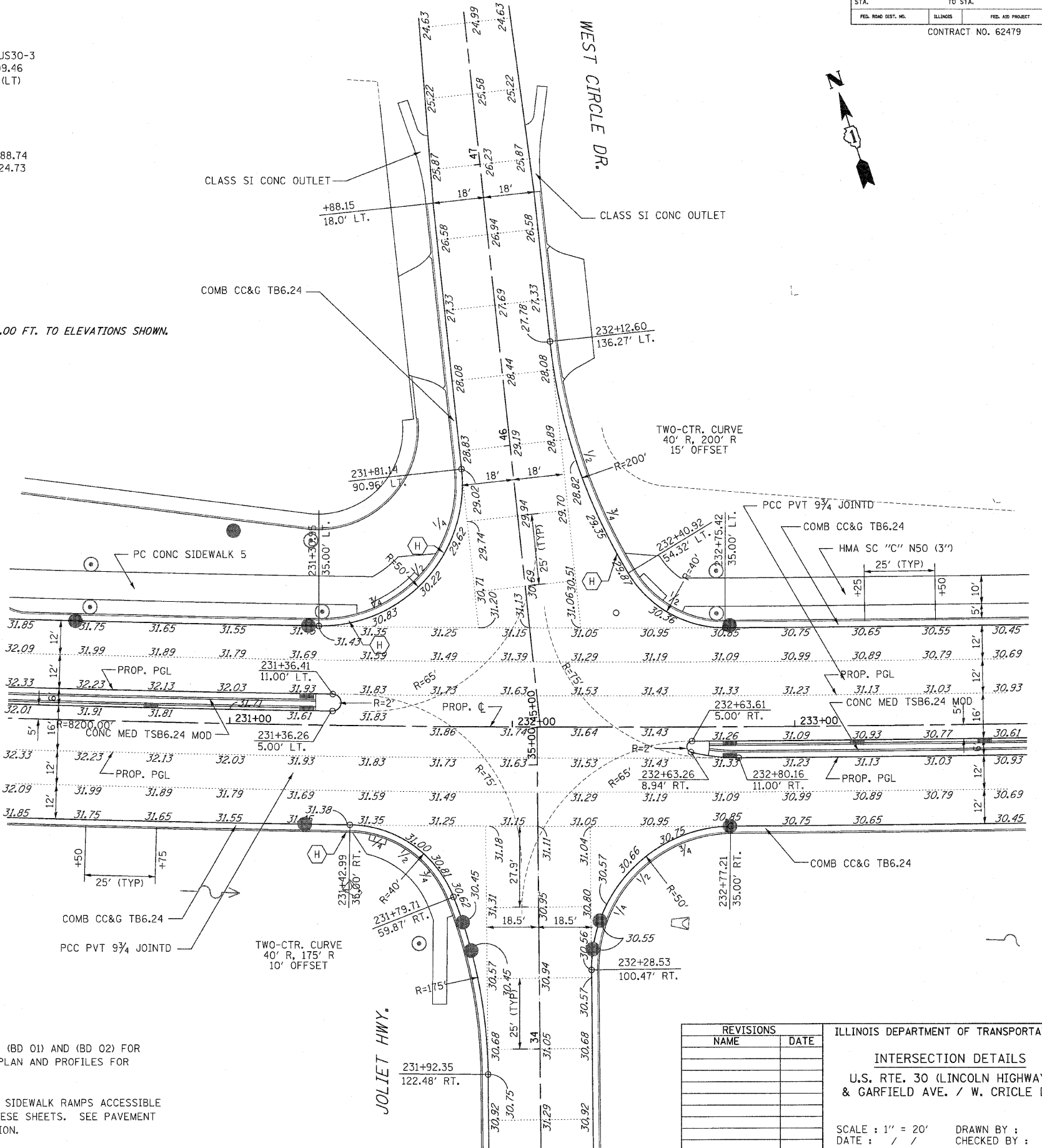
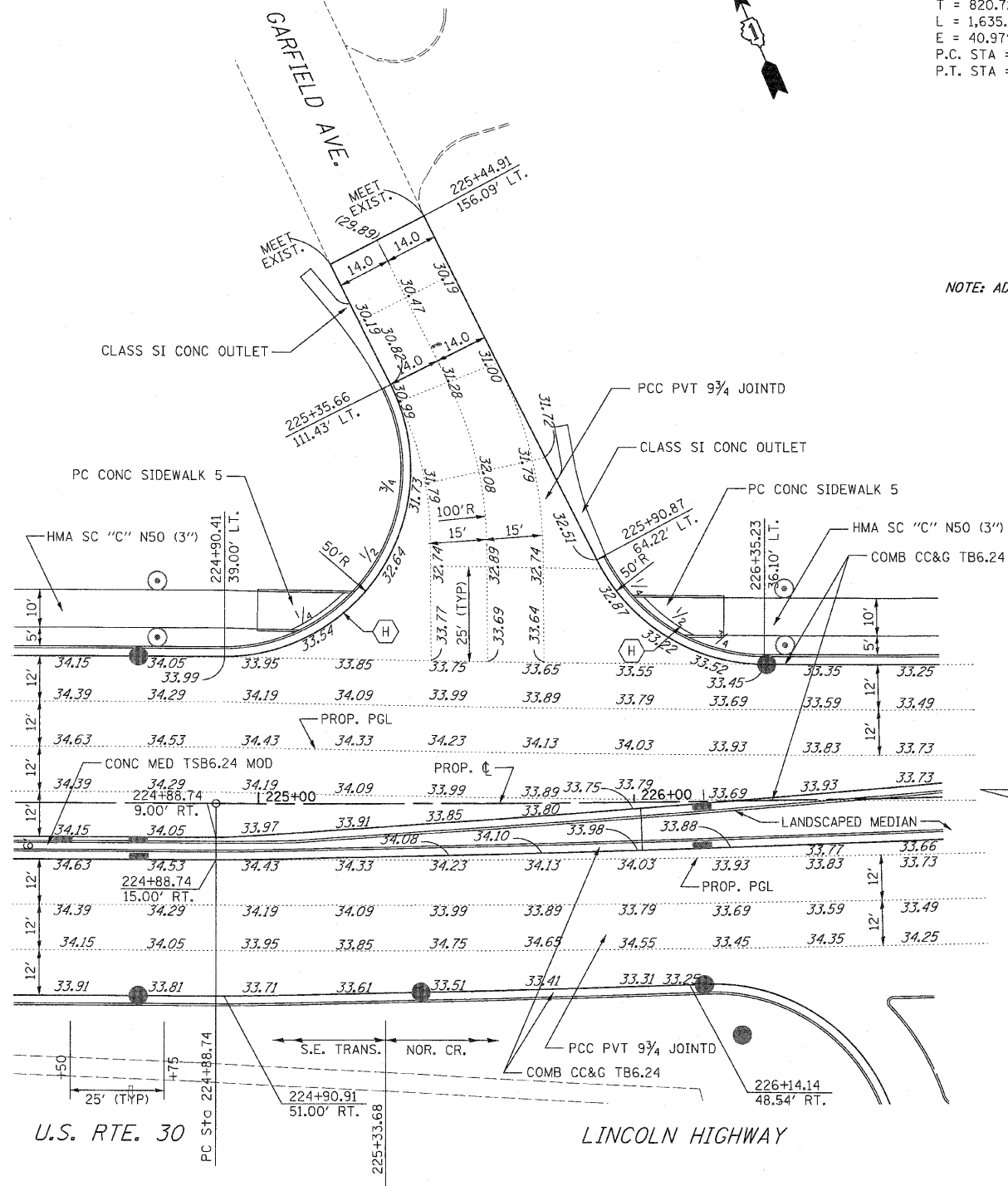


PROP. CURVE CLUS30-3
 PI STA. = 233+09.46
 $\Delta = 11^\circ 25' 52''$ (LT)
 $D = 0^\circ 41' 55''$
 $R = 8,200.00'$
 $T = 820.72'$
 $L = 1,635.98'$
 $E = 40.97'$
 P.C. STA = 224+88.74
 P.T. STA = 241+24.73

NOTE: ADD 700.00 FT. TO ELEVATIONS SHOWN.



NOTES:

- SEE DISTRICT ONE STANDARD DETAILS (BD 01) AND (BD 02) FOR DRIVEWAY CONSTRUCTION DETAILS. SEE PLAN AND PROFILES FOR DRIVEWAY LOCATIONS AND DIMENSIONS.
- SEE STATE STANDARD 424001-02 FOR SIDEWALK RAMP ACCESSIBLE TO THE DISABLED, MARKED AS (H) ON THESE SHEETS. SEE PAVEMENT MARKING PLANS FOR LOCATION VERIFICATION.

REVISIONS	
NAME	DATE

ILLINOIS DEPARTMENT OF TRANSPORTATION
 INTERSECTION DETAILS
 U.S. RTE. 30 (LINCOLN HIGHWAY)
 & GARFIELD AVE. / W. CRICLE DR.
 SCALE: 1" = 20'
 DATE: / /
 DRAWN BY:
 CHECKED BY: