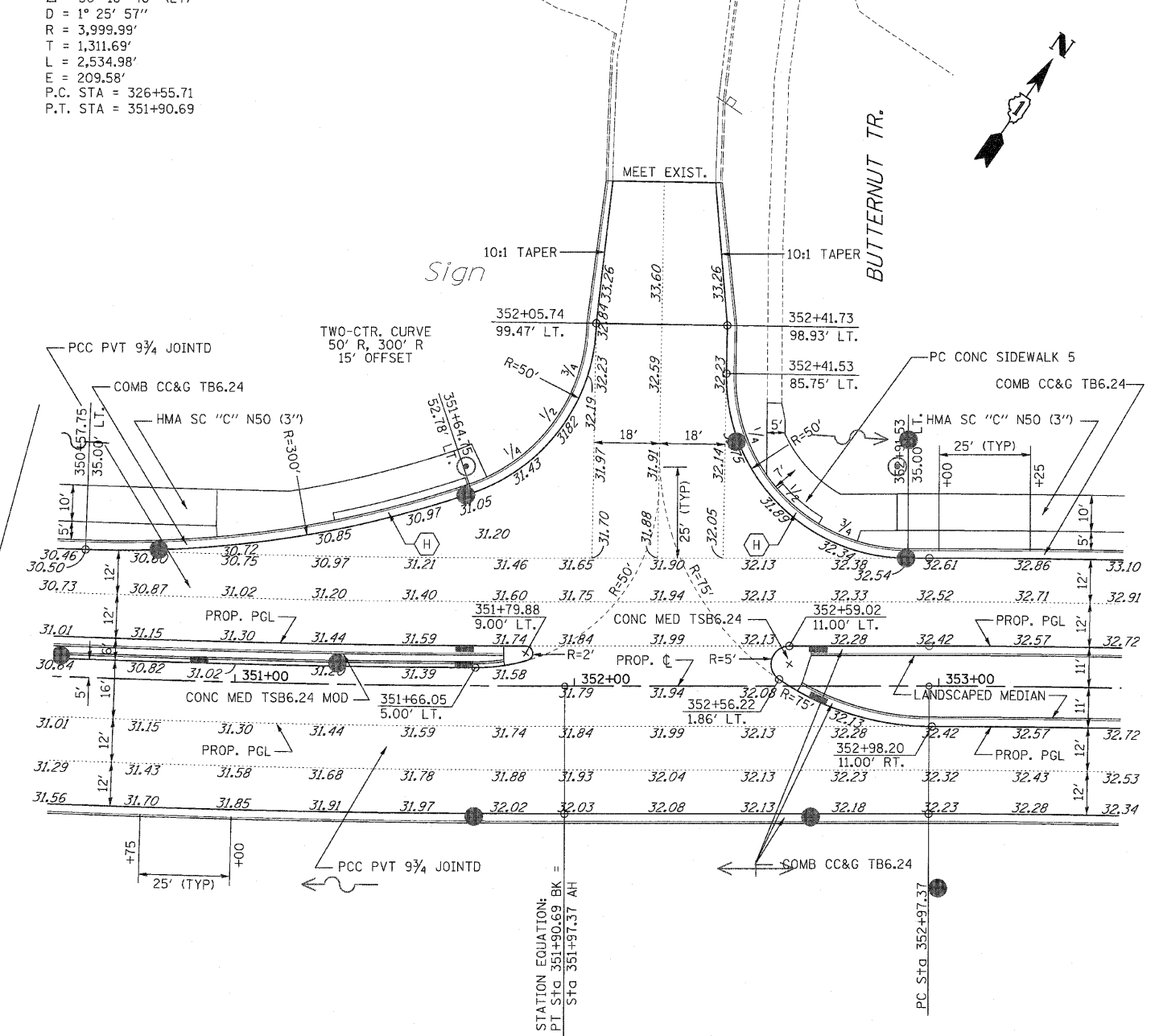
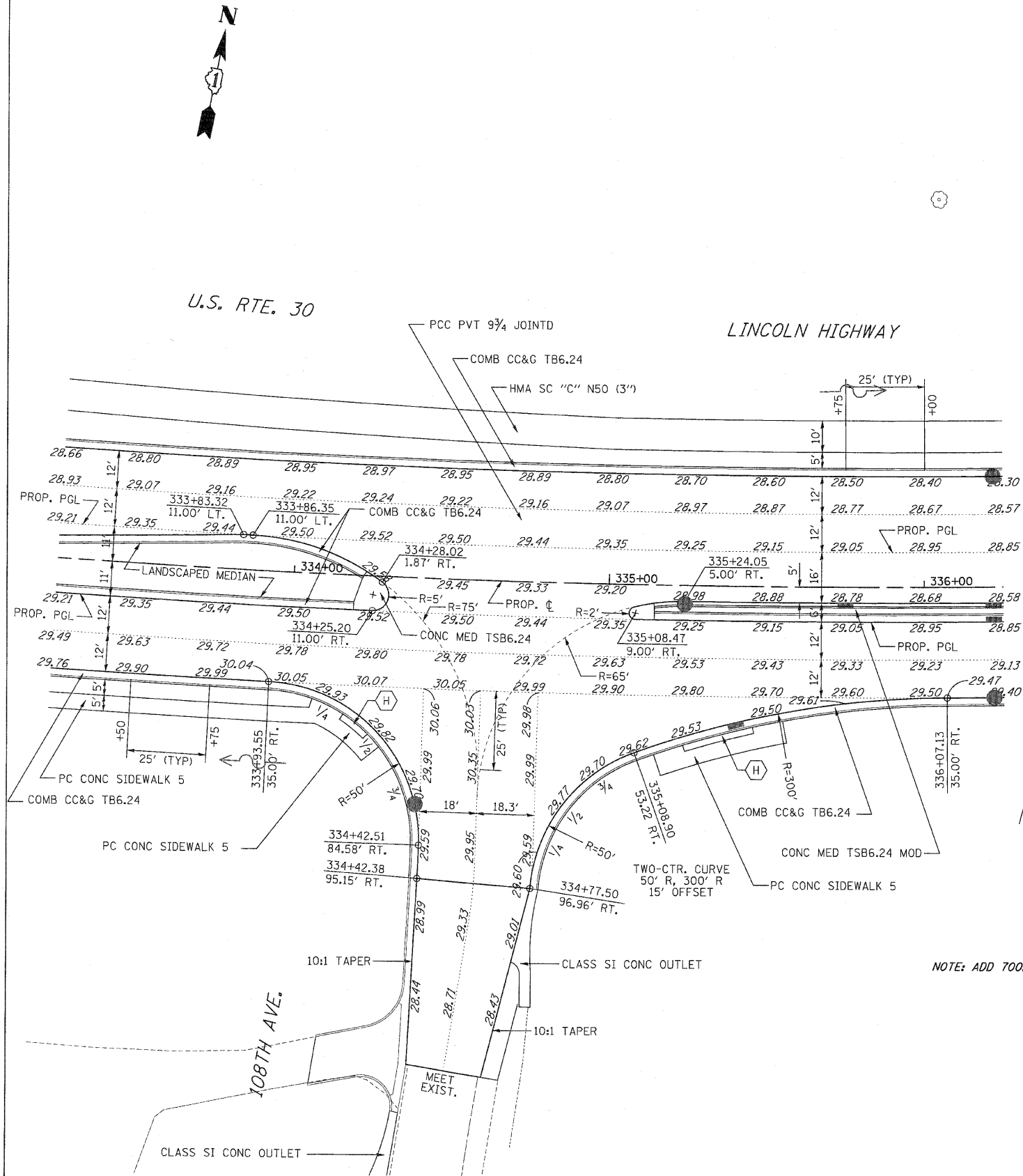


F.A.P. RTE.	SECTION	COUNTY	TOTAL SHEETS	SHEET NO.
353	(12&13)WRS-3	WILL	1235	409
STA.	TO STA.			
FED. ROAD DIST. NO.	ILLINOIS	FED. AID PROJECT		
CONTRACT NO. 62479				

PROP. CURVE CLUS30-6
 PI STA. = 339+67.40
 $\Delta = 36^\circ 18' 40''$ (LT)
 $D = 1^\circ 25' 57''$
 $R = 3,999.99'$
 $T = 1,311.69'$
 $L = 2,534.98'$
 $E = 209.58'$
 P.C. STA = 326+55.71
 P.T. STA = 351+90.69



NOTE: ADD 700.00 FT. TO ELEVATIONS SHOWN.

- NOTES:
- SEE DISTRICT ONE STANDARD DETAILS (BD 01) AND (BD 02) FOR DRIVEWAY CONSTRUCTION DETAILS. SEE PLAN AND PROFILES FOR DRIVEWAY LOCATIONS AND DIMENSIONS.
 - SEE STATE STANDARD 424001 FOR SIDEWALK RAMPS ACCESSIBLE TO THE DISABLED, MARKED AS (H) ON THESE SHEETS. SEE PAVEMENT MARKING PLANS FOR LOCATION VERIFICATION.

REVISIONS		ILLINOIS DEPARTMENT OF TRANSPORTATION
NAME	DATE	
		INTERSECTION DETAILS U.S. RTE. 30 (LINCOLN HIGHWAY) & 108TH AVE. / BUTTERNUT TR.

SCALE : 1" = 50'
 DATE : / /
 DRAWN BY : BAE
 CHECKED BY : GB