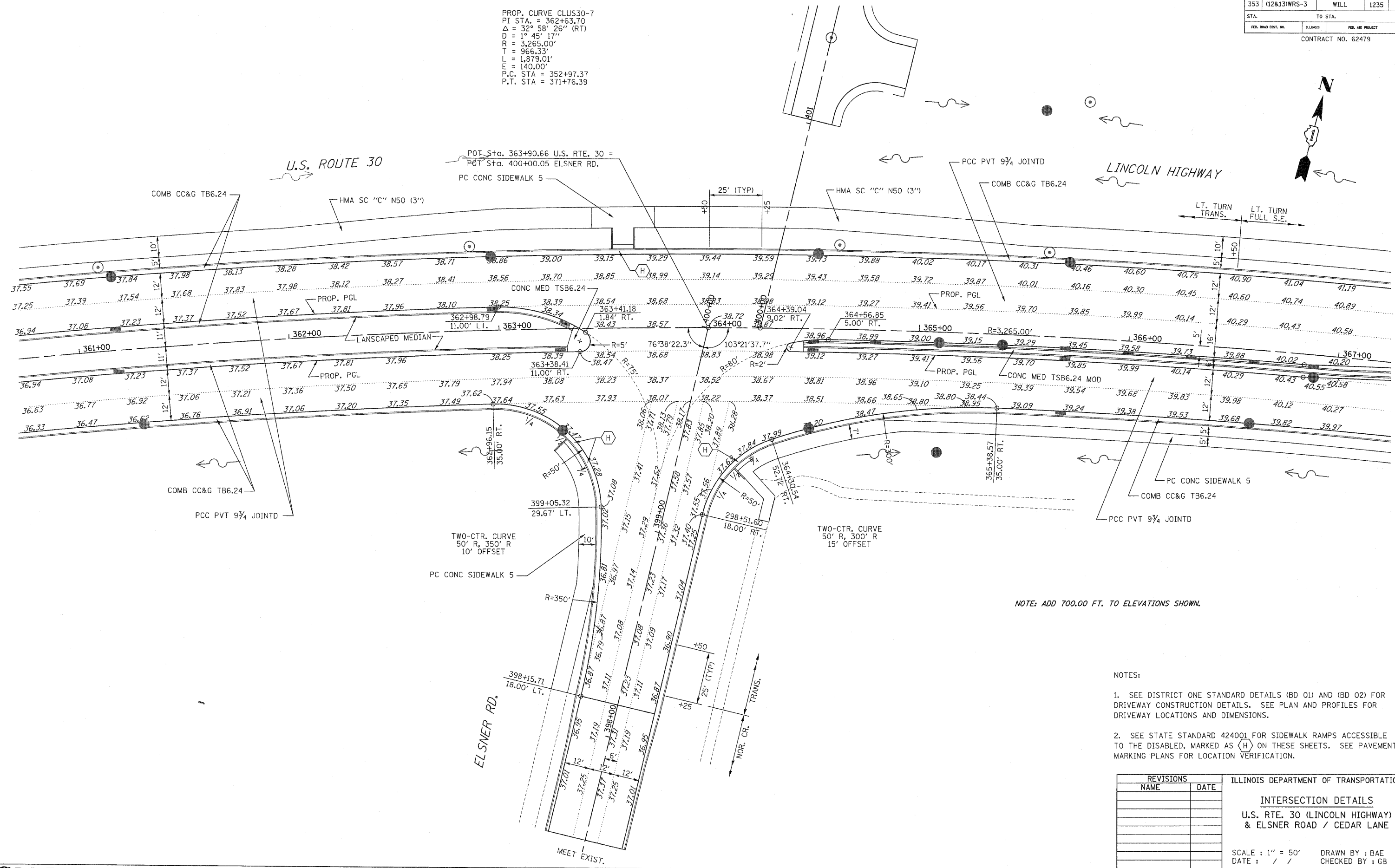
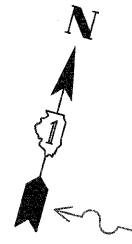


F.A.P. RTE.	SECTION	COUNTY	TOTAL SHEETS	SHEET NO.
353	(12&13)WRS-3	WILL.	1235	410
STA.	TO STA.			
FED. ROAD DIST. NO.	ILLINOIS	FED. AID PROJECT		

CONTRACT NO. 62479

PROP. CURVE CLUS30-7
 PI STA. = 362+63.70
 $\Delta = 32^\circ 58' 26''$ (RT)
 $D = 1^\circ 45' 17''$
 $R = 3,265.00'$
 $T = 966.33'$
 $L = 1,879.01'$
 $E = 140.00'$
 P.C. STA = 352+97.37
 P.T. STA = 371+76.39



NOTE: ADD 700.00 FT. TO ELEVATIONS SHOWN.

- NOTES:
- SEE DISTRICT ONE STANDARD DETAILS (BD 01) AND (BD 02) FOR DRIVEWAY CONSTRUCTION DETAILS. SEE PLAN AND PROFILES FOR DRIVEWAY LOCATIONS AND DIMENSIONS.
 - SEE STATE STANDARD 424001 FOR SIDEWALK RAMPS ACCESSIBLE TO THE DISABLED, MARKED AS (H) ON THESE SHEETS. SEE PAVEMENT MARKING PLANS FOR LOCATION VERIFICATION.

REVISIONS		ILLINOIS DEPARTMENT OF TRANSPORTATION
NAME	DATE	
		INTERSECTION DETAILS U.S. RTE. 30 (LINCOLN HIGHWAY) & ELSNER ROAD / CEDAR LANE

SCALE: 1" = 50'
 DATE: / /
 DRAWN BY: BAE
 CHECKED BY: GB