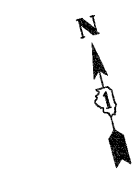
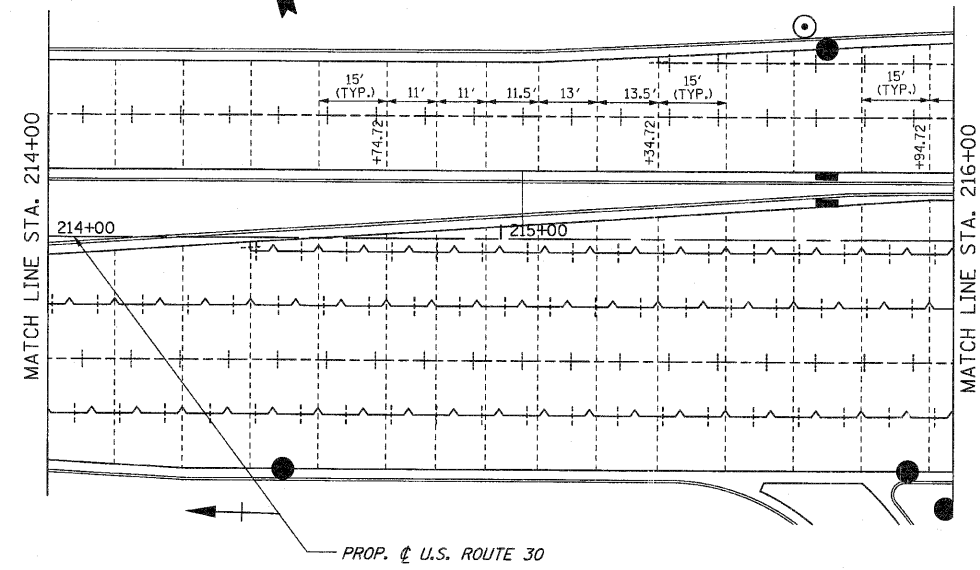
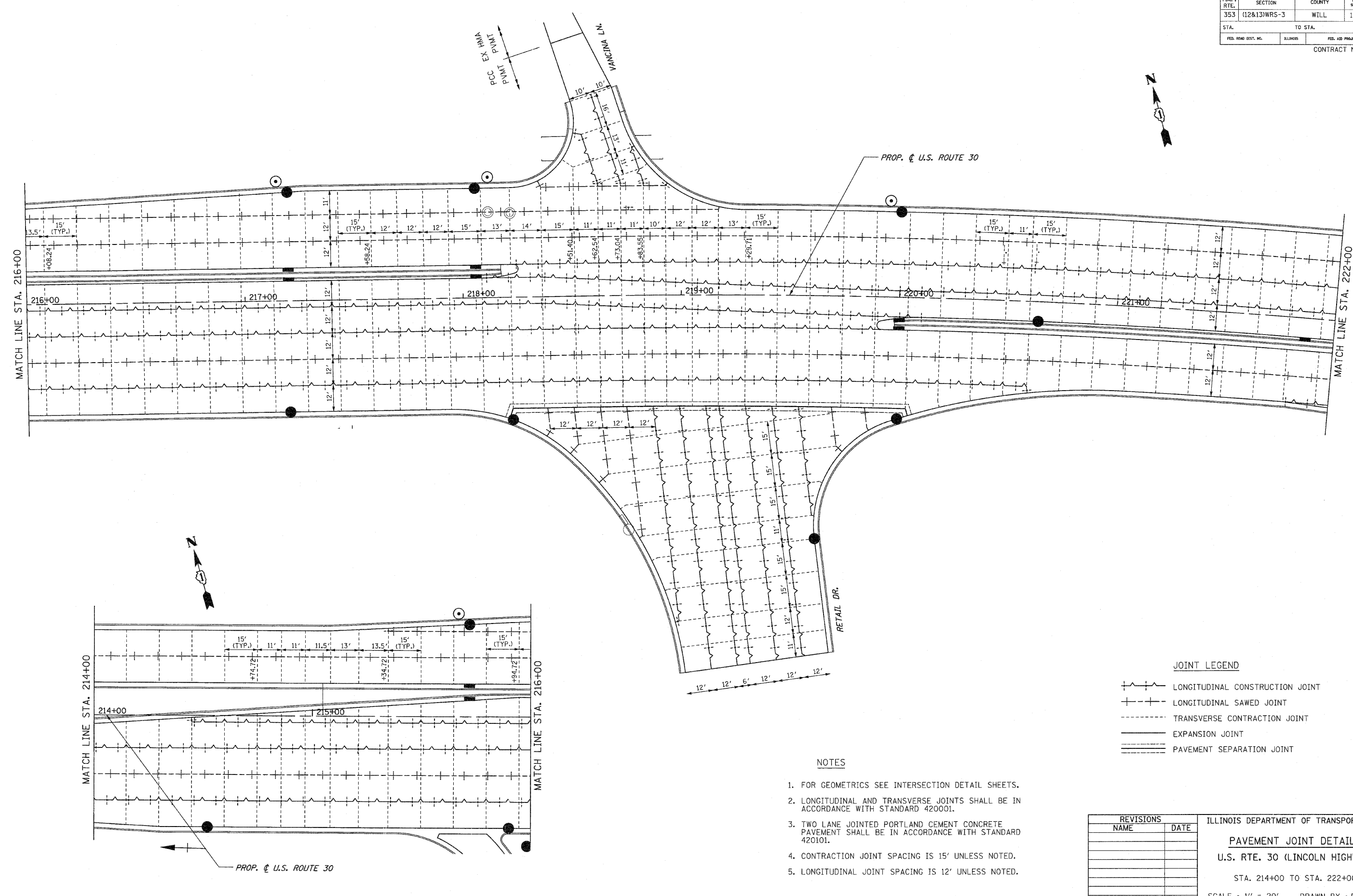


F.A.P. RTE.	SECTION	COUNTY	TOTAL SHEETS	SHEET NO.
353	(12&13)WRS-3	WILL	1235	424
STA.	TO STA.			
FED. ROAD DIST. NO.	ILLINOIS	FED. AID PROJECT		
CONTRACT NO. 62479				



JOINT LEGEND

	LONGITUDINAL CONSTRUCTION JOINT
	LONGITUDINAL SAWED JOINT
	TRANSVERSE CONTRACTION JOINT
	EXPANSION JOINT
	PAVEMENT SEPARATION JOINT

NOTES

1. FOR GEOMETRICS SEE INTERSECTION DETAIL SHEETS.
2. LONGITUDINAL AND TRANSVERSE JOINTS SHALL BE IN ACCORDANCE WITH STANDARD 420001.
3. TWO LANE JOINTED PORTLAND CEMENT CONCRETE PAVEMENT SHALL BE IN ACCORDANCE WITH STANDARD 420101.
4. CONTRACTION JOINT SPACING IS 15' UNLESS NOTED.
5. LONGITUDINAL JOINT SPACING IS 12' UNLESS NOTED.

REVISIONS	
NAME	DATE

ILLINOIS DEPARTMENT OF TRANSPORTATION
PAVEMENT JOINT DETAILS
 U.S. RTE. 30 (LINCOLN HIGHWAY)
 STA. 214+00 TO STA. 222+00
 SCALE : 1" = 20'
 DATE : / / DRAWN BY : BAE
 CHECKED BY : GB