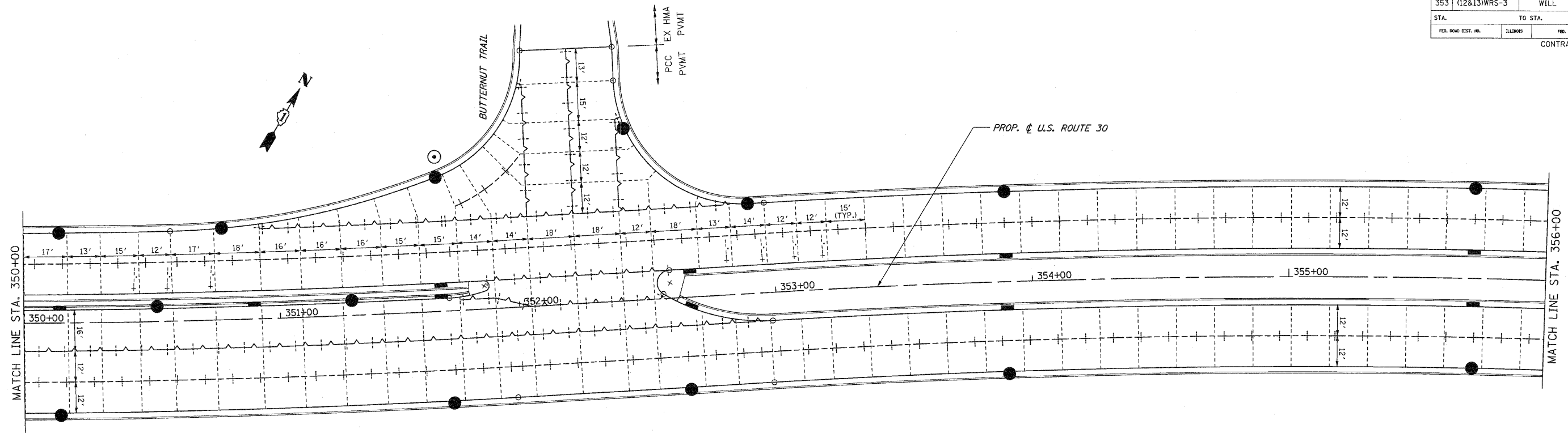


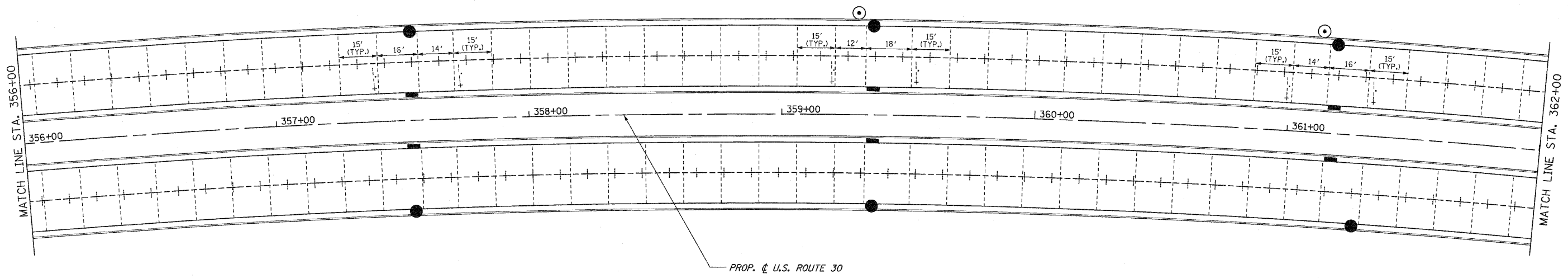
| | | | | |
|---------------------|--------------|----------|------------------|-----------|
| F.A.P. RTE. | SECTION | COUNTY | TOTAL SHEETS | SHEET NO. |
| 353 | (12&13)WRS-3 | WILL | 1235 | 435 |
| STA. | | TO STA. | | |
| FED. ROAD DIST. NO. | | ILLINOIS | FED. AID PROJECT | |
| CONTRACT NO. 62479 | | | | |



JOINT LEGEND

| | |
|--|---------------------------------|
| | LONGITUDINAL CONSTRUCTION JOINT |
| | LONGITUDINAL SAWED JOINT |
| | TRANSVERSE CONTRACTION JOINT |
| | EXPANSION JOINT |
| | PAVEMENT SEPARATION JOINT |

- NOTES**
- FOR GEOMETRICS SEE INTERSECTION DETAIL SHEETS.
 - LONGITUDINAL AND TRANSVERSE JOINTS SHALL BE IN ACCORDANCE WITH STANDARD 420001.
 - TWO LANE JOINTED PORTLAND CEMENT CONCRETE PAVEMENT SHALL BE IN ACCORDANCE WITH STANDARD 420101.
 - CONTRACTION JOINT SPACING IS 15' UNLESS NOTED.
 - LONGITUDINAL JOINT SPACING IS 12' UNLESS NOTED.



| REVISIONS | | ILLINOIS DEPARTMENT OF TRANSPORTATION |
|-----------|------|--|
| NAME | DATE | |
| | | PAVEMENT JOINT DETAILS U.S. RTE. 30 (LINCOLN HIGHWAY) STA. 350+00 TO STA. 362+00 SCALE : 1" = 20' DATE : / / DRAWN BY : BAE CHECKED BY : GB |
| | | |
| | | |
| | | |
| | | |