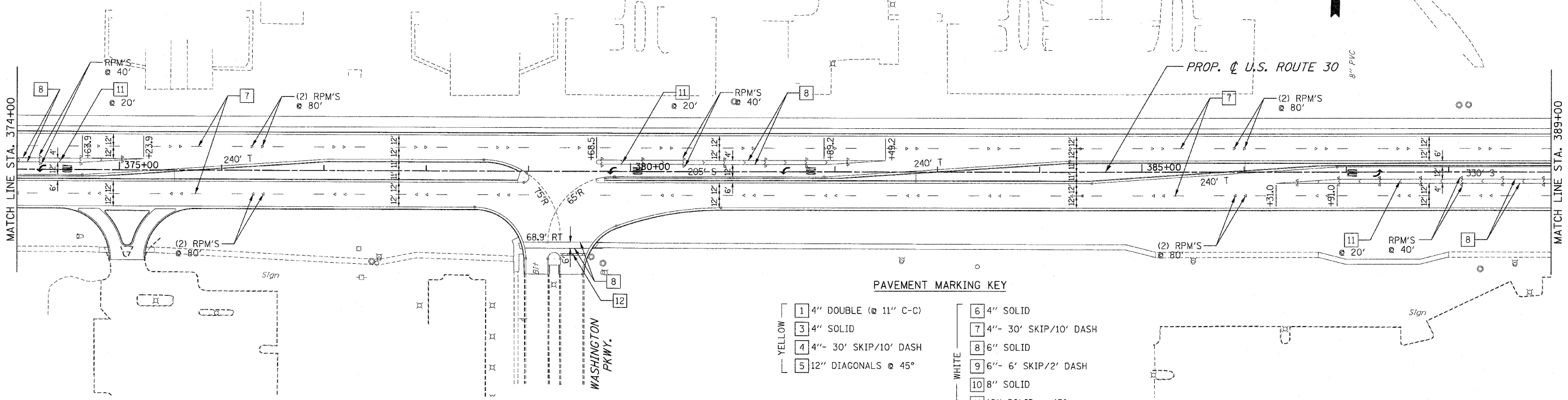
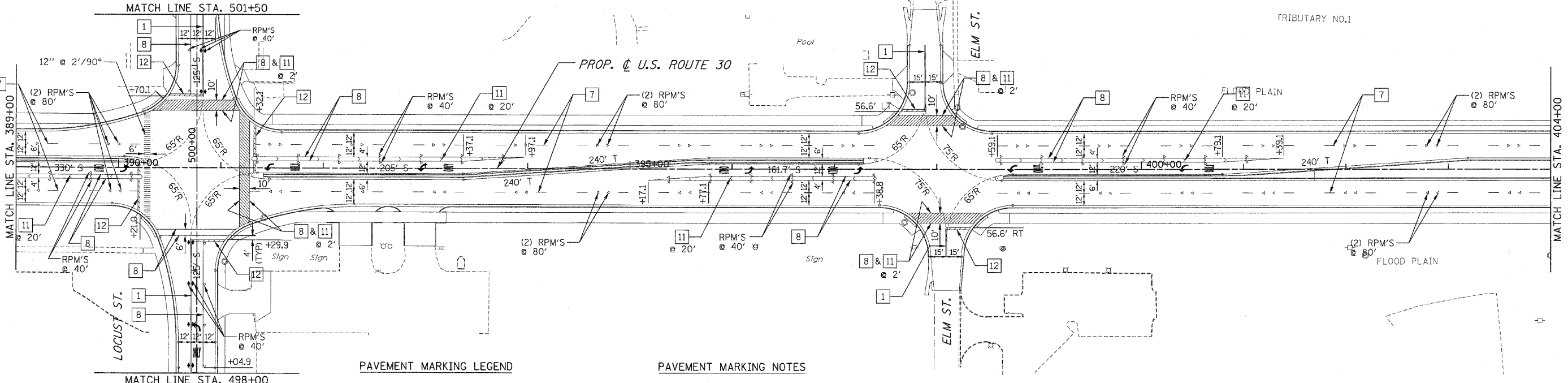


F.A.P. RTE.	SECTION	COUNTY	TOTAL SHEETS	SHEET NO.
353	(12&13)WRS-3	WILL.	1235	451
STA.	TO STA.			
FED. ROAD DIST. NO.	ILLINOIS	FED. AID PROJECT		
CONTRACT NO. 62479				



PAVEMENT MARKING KEY

YELLOW	1 4" DOUBLE @ 11" C-C	6 4" SOLID
	3 4" SOLID	7 4"- 30' SKIP/10' DASH
	4 4"- 30' SKIP/10' DASH	8 6" SOLID
	5 12" DIAGONALS @ 45°	9 6"- 6' SKIP/2' DASH
		10 8" SOLID
		11 12" SOLID @ 45°
		12 24" STOP BAR
		WHITE



PAVEMENT MARKING LEGEND

- LETTERS AND SYMBOLS
- STOP LINE, 24" WHITE
- RAISED PAVEMENT MARKER (RPM), ONE-WAY CRYSTAL
- RAISED PAVEMENT MARKER (RPM), ONE-WAY AMBER
- RAISED PAVEMENT MARKER (RPM), TWO-WAY AMBER
- 240' T LENGTH OF TAPER
- 205' S LENGTH OF STORAGE

PAVEMENT MARKING NOTES

1. THERMOPLASTIC PAVEMENT MARKINGS SHALL BE APPLIED ON BITUMINOUS PAVEMENT.
2. POLYUREA PAVEMENT MARKINGS SHALL BE APPLIED ON P.C. CONCRETE PAVEMENT.
3. PAVEMENT MARKINGS AND RAISED PAVEMENT MARKERS SHALL BE PER DISTRICT ONE PAVEMENT MARKING AND RAISED PAVEMENT MARKERS DETAIL.
4. TWO WEEKS PRIOR TO PLACING PERMANENT PAVEMENT MARKINGS CONTACT LAWRENCE HILL, IDOT'S AREA TRAFFIC FIELD ENGINEER AT (815)485-6475.



REVISIONS	
NAME	DATE

ILLINOIS DEPARTMENT OF TRANSPORTATION
PAVEMENT MARKING PLANS
U.S. RTE. 30 (LINCOLN HIGHWAY)
 STA. 374+00 TO STA. 404+00
 SCALE : 1" = 50' DRAWN BY : BAE
 DATE : 10/12/2010 CHECKED BY : GB