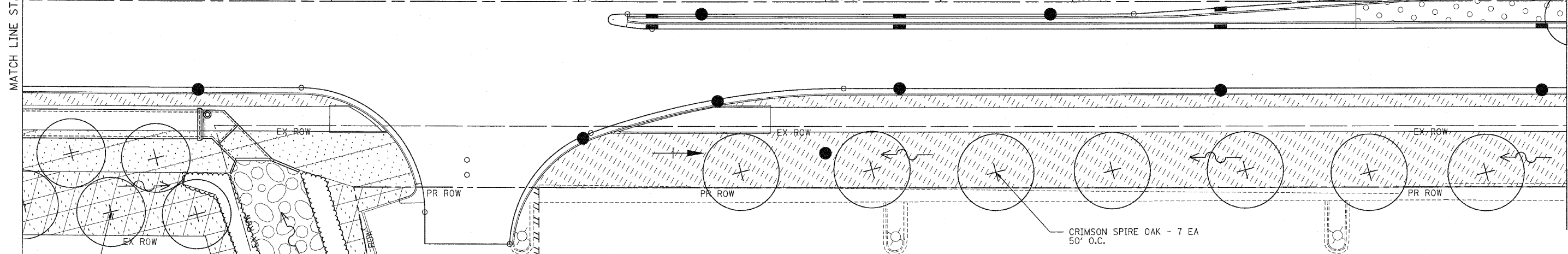
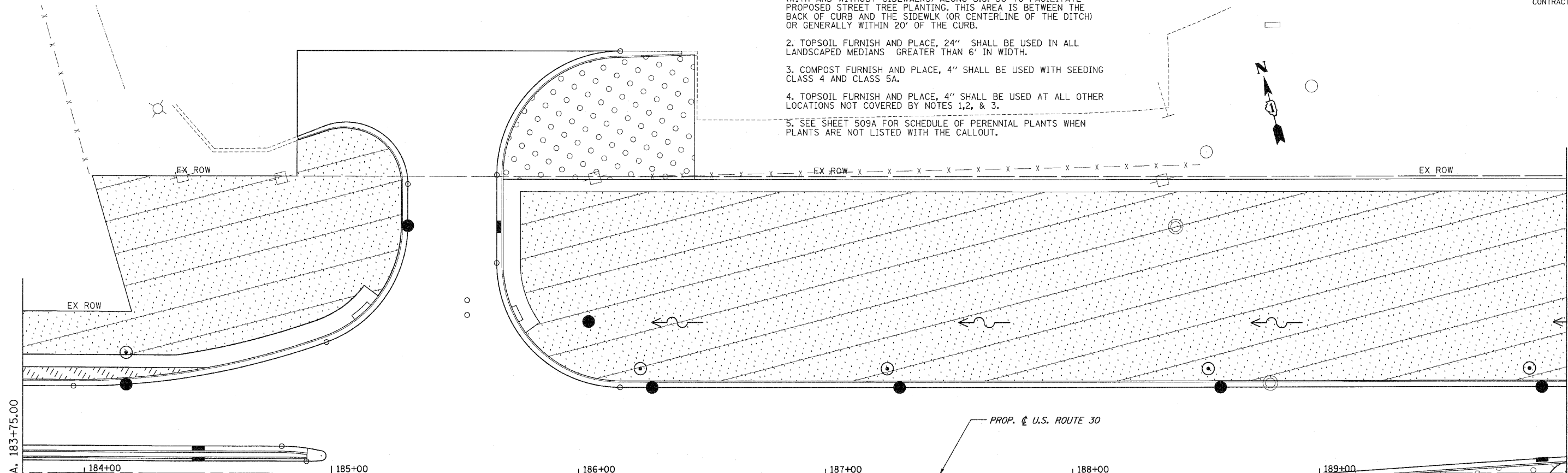


F.A.P. RTE.	SECTION	COUNTY	TOTAL SHEETS	SHEET NO.
353	(12&13)WRS-3	WILL	1235	466
STA.	TO STA.			
FED. ROAD DIST. NO.	ILLINOIS	FED. AID PROJECT		
CONTRACT NO. 62479				

LANDSCAPING GENERAL NOTES

1. TOPSOIL FURNISH AND PLACE, 8" SHALL BE USED IN PARKWAYS (WITH AND WITHOUT SIDEWALKS) ALONG U.S. 30 TO FACILITATE PROPOSED STREET TREE PLANTING. THIS AREA IS BETWEEN THE BACK OF CURB AND THE SIDEWALK (OR CENTERLINE OF THE DITCH) OR GENERALLY WITHIN 20' OF THE CURB.
2. TOPSOIL FURNISH AND PLACE, 24" SHALL BE USED IN ALL LANDSCAPED MEDIANS GREATER THAN 6' IN WIDTH.
3. COMPOST FURNISH AND PLACE, 4" SHALL BE USED WITH SEEDING CLASS 4 AND CLASS 5A.
4. TOPSOIL FURNISH AND PLACE, 4" SHALL BE USED AT ALL OTHER LOCATIONS NOT COVERED BY NOTES 1,2, & 3.
5. SEE SHEET 509A FOR SCHEDULE OF PERENNIAL PLANTS WHEN PLANTS ARE NOT LISTED WITH THE CALLOUT.



LEGEND

- | | | | |
|--|--------------------------------|--|--|
| | SODDING, SALT TOLERANT | | STONE RIPRAP, CLASS AS SPECIFIED |
| | SEEDING, CLASS 2A | | SEEDING, CLASS 4B (MODIFIED) WETLAND MIX |
| | SEEDING, CLASS 4 & 5A COMBINED | | EXISTING SODDING |
| | SEEDING, CLASS 4 | | EXISTING SEEDING, CLASS 4 |
| | SEEDING, CLASS 1 | | |
| | PERENNIAL PLANTS | | |

BUR OAK - 5 EA

SILKY DOGWOOD 45 EA
5' O.C. - STAGGERED

STONE RIPRAP
SEE STRUCTURE PLANS

SILKY DOGWOOD 35 EA
5' O.C. - STAGGERED

CRIMSON SPIRE OAK - 7 EA
50' O.C.

REVISIONS	
NAME	DATE

ILLINOIS DEPARTMENT OF TRANSPORTATION
LANDSCAPING PLANS
 U.S. RTE. 30 (LINCOLN HIGHWAY)
 STA. 183+75.00 TO STA. 190+00
 SCALE : 1" = 20'
 DATE : 10/12/2010
 DRAWN BY : BAE
 CHECKED BY : GB