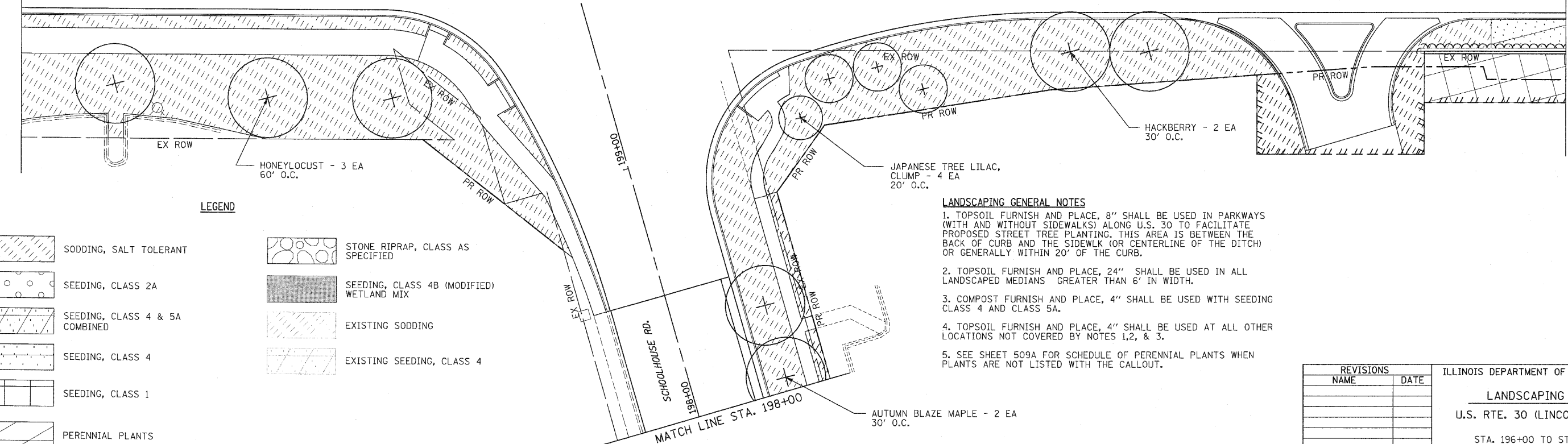
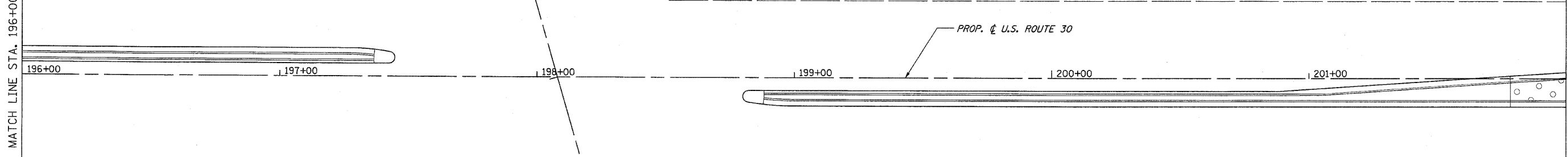
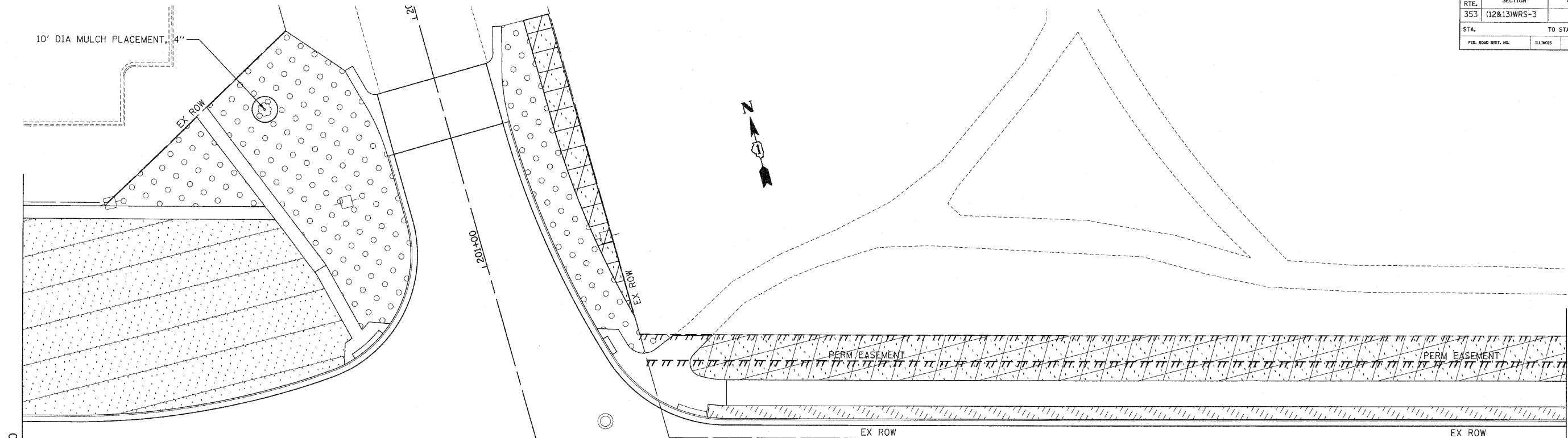


F.A.P. RTE.	SECTION	COUNTY	TOTAL SHEETS	SHEET NO.
353	(12&13)WRS-3	WILL	1235	468
STA.		TO STA.		
FED. ROAD DIST. NO.		ILLINOIS		FED. AID PROJECT
CONTRACT NO. 62479				



**LEGEND**

	SODDING, SALT TOLERANT		STONE RIPRAP, CLASS AS SPECIFIED
	SEEDING, CLASS 2A		SEEDING, CLASS 4B (MODIFIED) WETLAND MIX
	SEEDING, CLASS 4 & 5A COMBINED		EXISTING SODDING
	SEEDING, CLASS 4		EXISTING SEEDING, CLASS 4
	SEEDING, CLASS 1		
	PERENNIAL PLANTS		

**LANDSCAPING GENERAL NOTES**

1. TOPSOIL FURNISH AND PLACE, 8" SHALL BE USED IN PARKWAYS (WITH AND WITHOUT SIDEWALKS) ALONG U.S. 30 TO FACILITATE PROPOSED STREET TREE PLANTING. THIS AREA IS BETWEEN THE BACK OF CURB AND THE SIDEWALK (OR CENTERLINE OF THE DITCH) OR GENERALLY WITHIN 20' OF THE CURB.
2. TOPSOIL FURNISH AND PLACE, 24" SHALL BE USED IN ALL LANDSCAPED MEDIANS GREATER THAN 6' IN WIDTH.
3. COMPOST FURNISH AND PLACE, 4" SHALL BE USED WITH SEEDING CLASS 4 AND CLASS 5A.
4. TOPSOIL FURNISH AND PLACE, 4" SHALL BE USED AT ALL OTHER LOCATIONS NOT COVERED BY NOTES 1, 2, & 3.
5. SEE SHEET 509A FOR SCHEDULE OF PERENNIAL PLANTS WHEN PLANTS ARE NOT LISTED WITH THE CALLOUT.

REVISIONS	
NAME	DATE

ILLINOIS DEPARTMENT OF TRANSPORTATION  
**LANDSCAPING PLANS**  
 U.S. RTE. 30 (LINCOLN HIGHWAY)  
 STA. 196+00 TO STA. 202+00  
 SCALE : 1" = 20'  
 DATE : 10/12/2010  
 DRAWN BY : BAE  
 CHECKED BY : GB