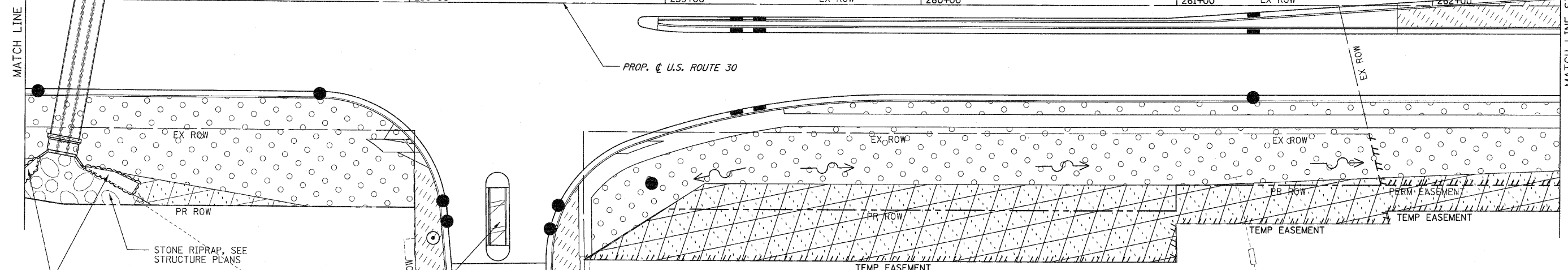
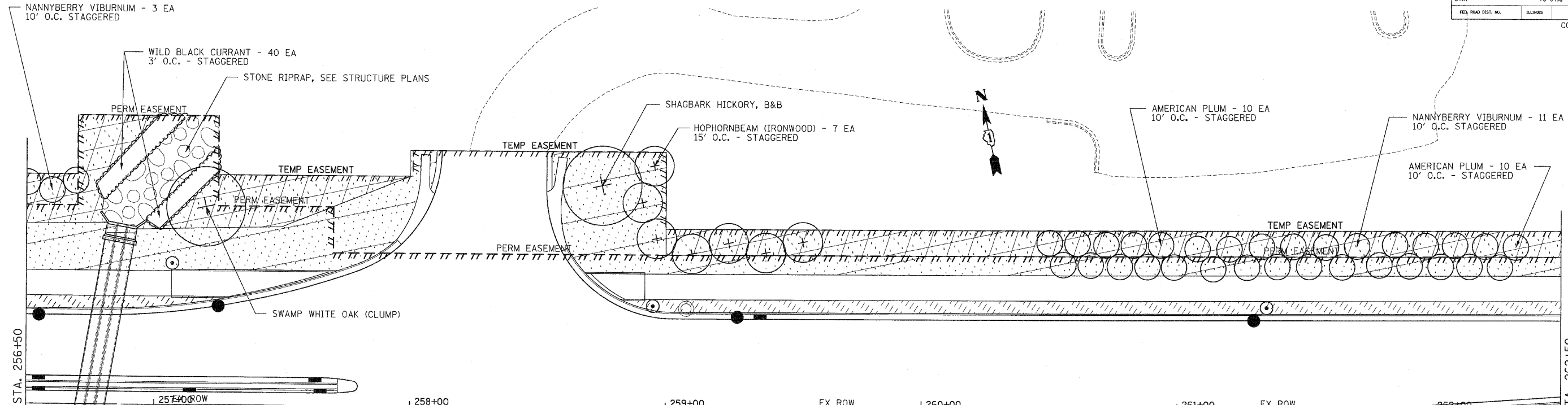


F.A.P. RTE.	SECTION	COUNTY	TOTAL SHEETS	SHEET NO.
353	(12&13)WRS-3	WILL	1235	479
STA.		TO STA.		
FED. ROAD DIST. NO.	BLINDS	FED. AID PROJECT		
CONTRACT NO. 62479				



PERENNIAL PLANT, ORNAMENTAL TYPE,  
GALLON POT - 0.5 UNIT  
-SPOROBOLUS HETEROLEPIS (PRAIRIE DROPSEED) - 50 EA  
PERENNIAL PLANT, BULB TYPE - 1.00 UNIT  
-DAFFODILS - 100 EA

**LEGEND**

- |  |                                |  |  |
|--|--------------------------------|--|--|
|  | SODDING, SALT TOLERANT         |  | STONE RIPRAP, CLASS AS SPECIFIED         |
|  | SEEDING, CLASS 2A              |  | SEEDING, CLASS 4B (MODIFIED) WETLAND MIX |
|  | SEEDING, CLASS 4 & 5A COMBINED |  | EXISTING SODDING                         |
|  | SEEDING, CLASS 4               |  | EXISTING SEEDING, CLASS 4                |
|  | SEEDING, CLASS 1               |  |  |
|  | PERENNIAL PLANTS               |  |  |

**LANDSCAPING GENERAL NOTES**

1. TOPSOIL FURNISH AND PLACE, 8" SHALL BE USED IN PARKWAYS (WITH AND WITHOUT SIDEWALKS) ALONG U.S. 30 TO FACILITATE PROPOSED STREET TREE PLANTING. THIS AREA IS BETWEEN THE BACK OF CURB AND THE SIDEWALK (OR CENTERLINE OF THE DITCH) OR GENERALLY WITHIN 20' OF THE CURB.
2. TOPSOIL FURNISH AND PLACE, 24" SHALL BE USED IN ALL LANDSCAPED MEDIANS GREATER THAN 6' IN WIDTH.
3. COMPOST FURNISH AND PLACE, 4" SHALL BE USED WITH SEEDING CLASS 4 AND CLASS 5A.
4. TOPSOIL FURNISH AND PLACE, 4" SHALL BE USED AT ALL OTHER LOCATIONS NOT COVERED BY NOTES 1, 2, & 3.
5. SEE SHEET 509A FOR SCHEDULE OF PERENNIAL PLANTS WHEN PLANTS ARE NOT LISTED WITH THE CALLOUT.

REVISIONS	
NAME	DATE

ILLINOIS DEPARTMENT OF TRANSPORTATION  
**LANDSCAPING PLANS**  
U.S. RTE. 30 (LINCOLN HIGHWAY)  
STA. 256+50 TO STA. 262+50  
SCALE : 1" = 20'  
DATE : 10/12/2010  
DRAWN BY : BAE  
CHECKED BY : GB