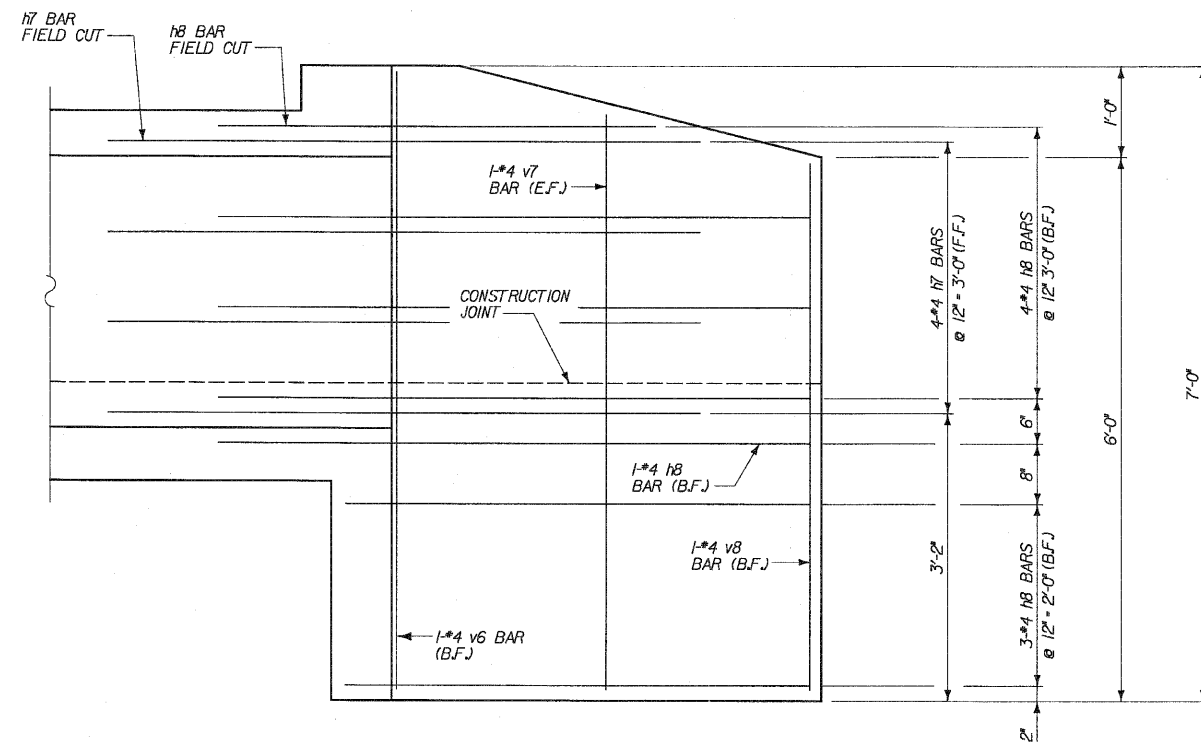
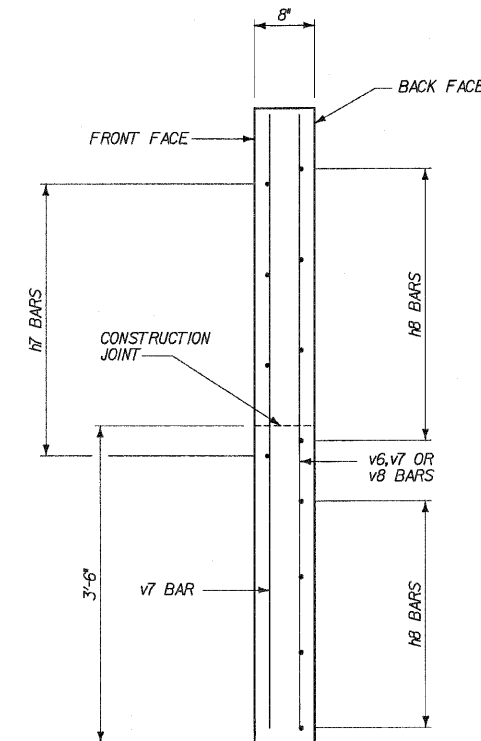


WING C & D PLAN



WING C & D ELEVATION



WING C & D TYPICAL SECTION

DESIGNED	CDS
CHECKED	ASP
DRAWN	EvH
CHECKED	CDS

REVISIONS	
NAME	DATE

DLZ 85 W. Algonquin Rd. Ste. 220
Arlington Heights IL 60005
DLZ Illinois, Inc.

CULVERT 'D'
WINGS C & D
U.S. ROUTE 30 (LINCOLN HIGHWAY)
F.A.P. 353 (U.S. 30)
SECTION (12 & 13) WRS-3
STATION 256+75.00
WILL COUNTY
STRUCTURE NUMBER 099-C014