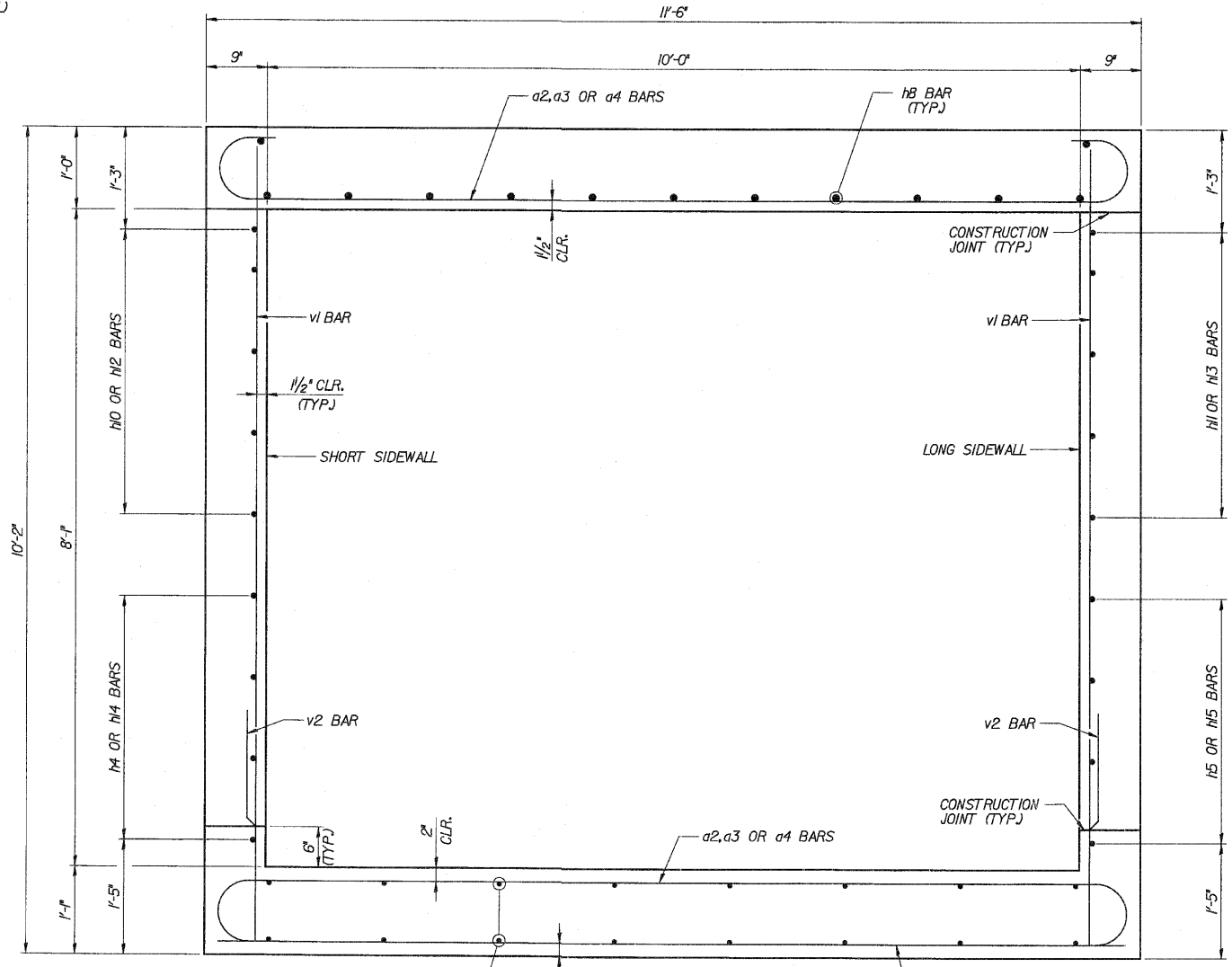


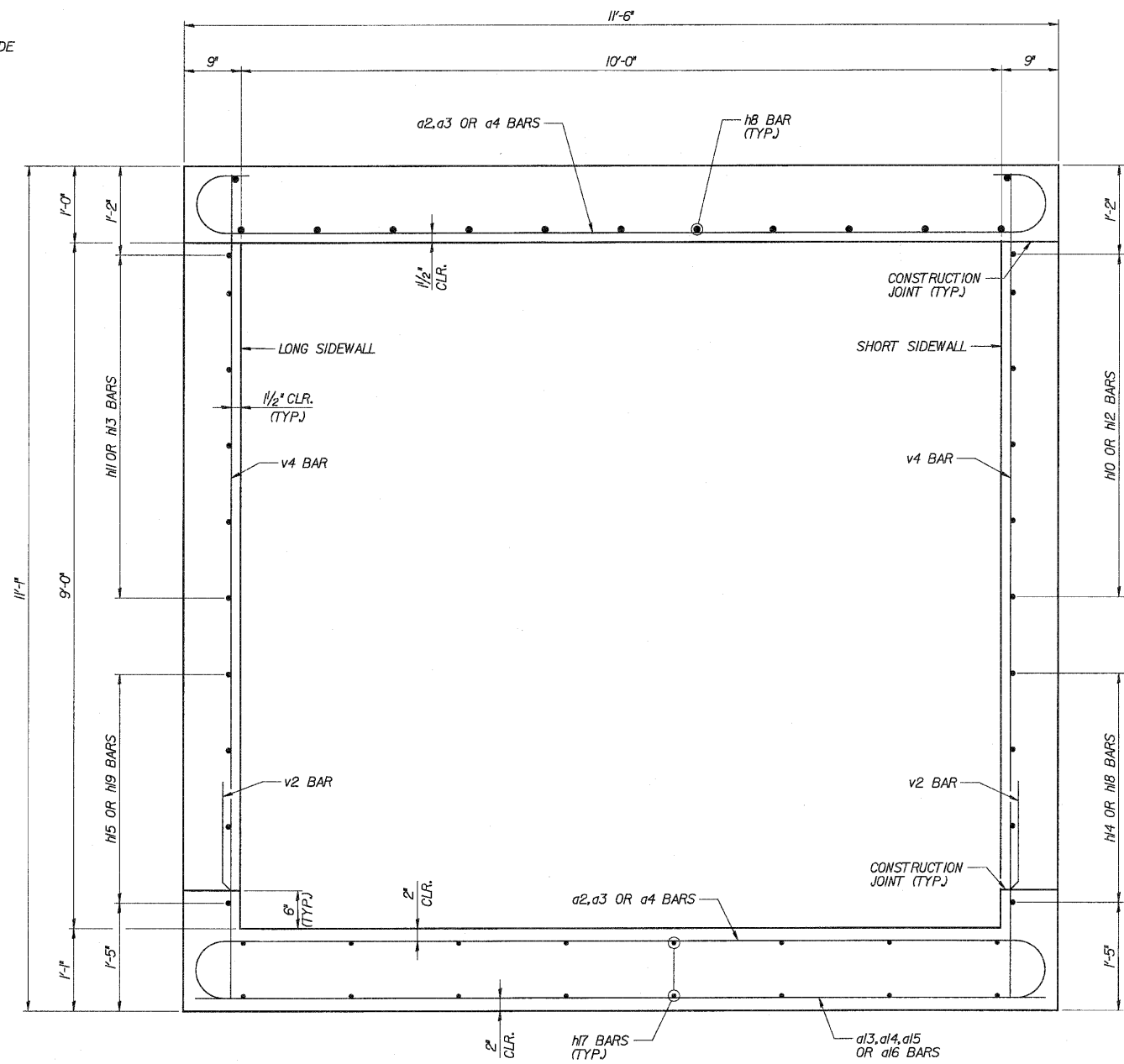
**SECTION L-L**

① 4\*5 h27 BARS @ 12'-3"-0" (LONG SIDEWALL)  
4\*5 h28 BARS @ 12'-3"-0" (SHORT SIDEWALL)



**SECTION F-F**

DESIGNED	ASP
CHECKED	CDS
DRAWN	BEM
CHECKED	ASP



**SECTION K-K**

NOTE:  
TILT HOOK BARS IN TOP AND BOTTOM SLAB TO PROVIDE REQUIRED CLEARANCE.

**DLZ** 85 W. Algonquin Rd. Ste. 220  
Arlington Heights IL 60005  
DLZ Illinois, Inc.

REVISIONS	
NAME	DATE

**CULVERT 'J'**  
**TYPICAL SECTIONS**  
U.S. ROUTE 30 (LINCOLN HIGHWAY)  
F.A.P. 353 (U.S. 30)  
SECTION (12 & 13) WRS-3  
STATION 182+31.00  
WILL COUNTY  
STRUCTURE NUMBER 099-C013