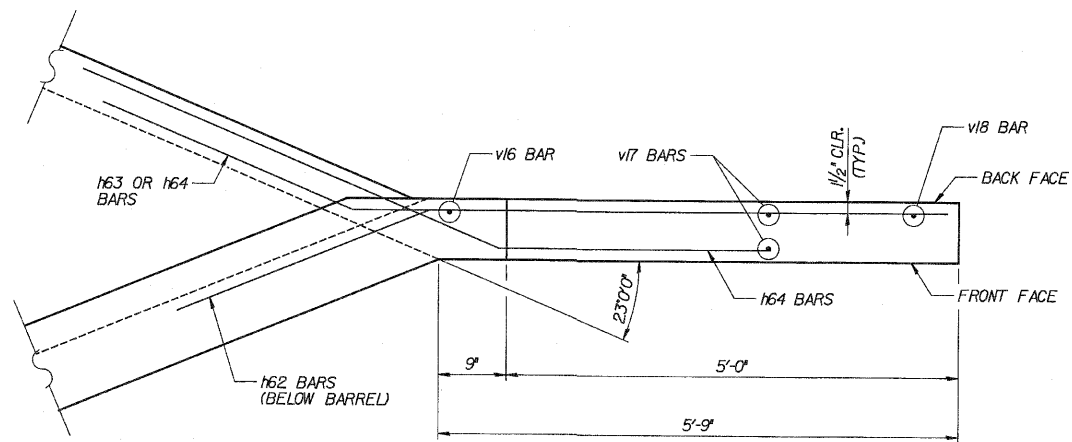
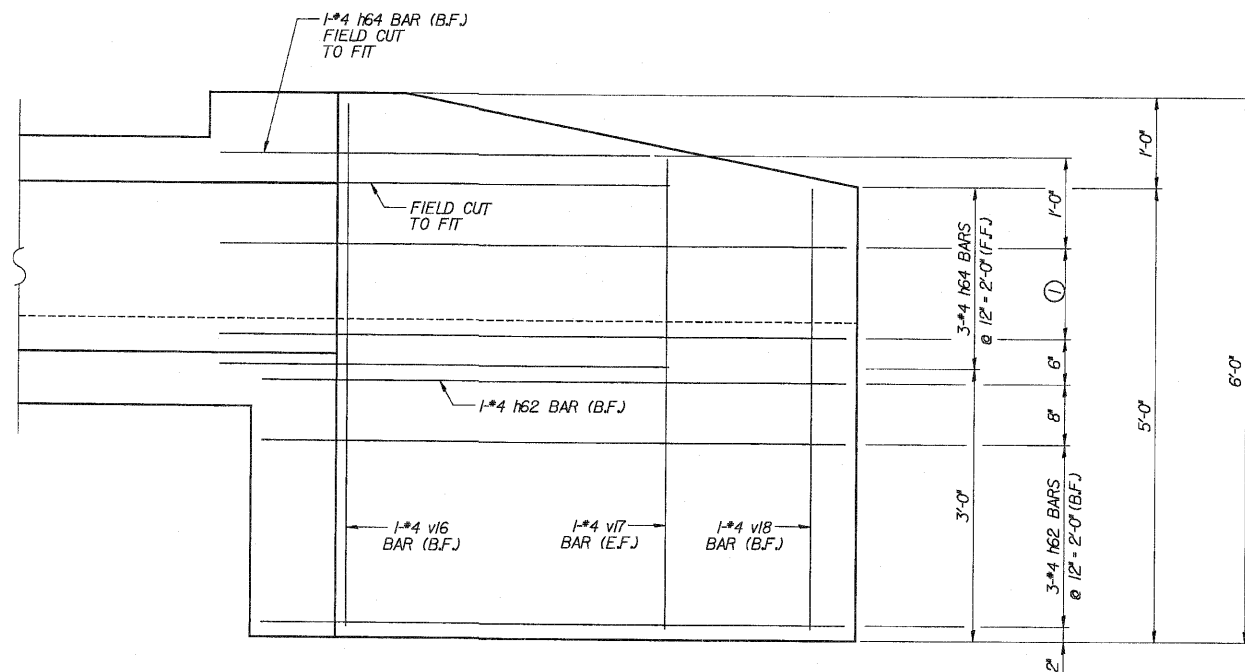


ROUTE NO.	SECTION	COUNTY	TOTAL SHEETS	SHEET NO.
FAP 353	*	WILL	1235	697
FED. ROAD DIST. #	ILLINOIS	FED. AID PROJECT		

\* SECT. (12 & 13) WRS-3  
\* CONTRACT NO. 62479



**WING A PLAN**

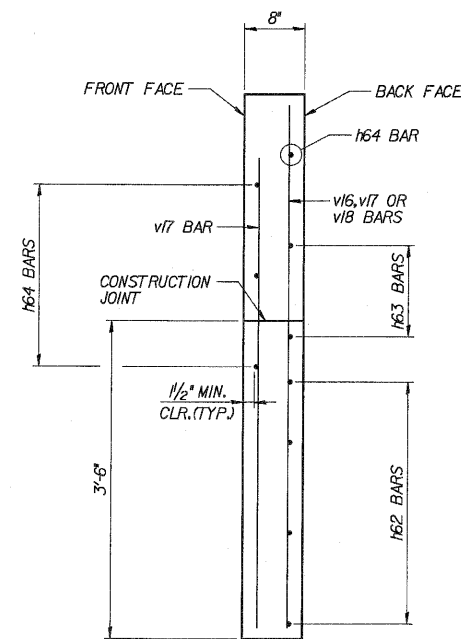


**WING A ELEVATION**

① 2-#4 163 BARS @ 12'-1'-0" (B.F.)

**LEGEND**

B.F. = BACK FACE  
F.F. = FRONT FACE  
E.F. = EACH FACE



**WING A TYPICAL SECTION**

DESIGNED	ASP
CHECKED	CDS
DRAWN	BEM
CHECKED	ASP

REVISIONS	
NAME	DATE

**DLZ** 85 W. Algonquin Rd. Ste. 220  
Arlington Heights IL 60005  
DLZ Illinois, Inc.

**CULVERT 'J'**  
**WING A**  
U.S. ROUTE 30 (LINCOLN HIGHWAY)  
F.A.P. 353 (U.S. 30)  
SECTION (12 & 13) WRS-3  
STATION 182+31.00  
WILL COUNTY  
STRUCTURE NUMBER 099-C013