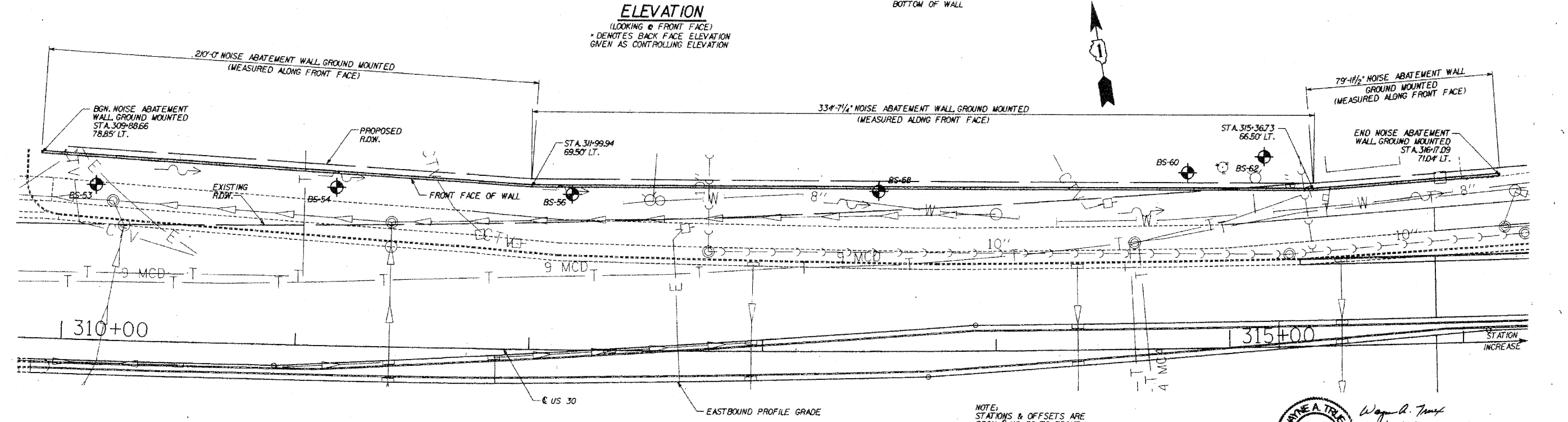
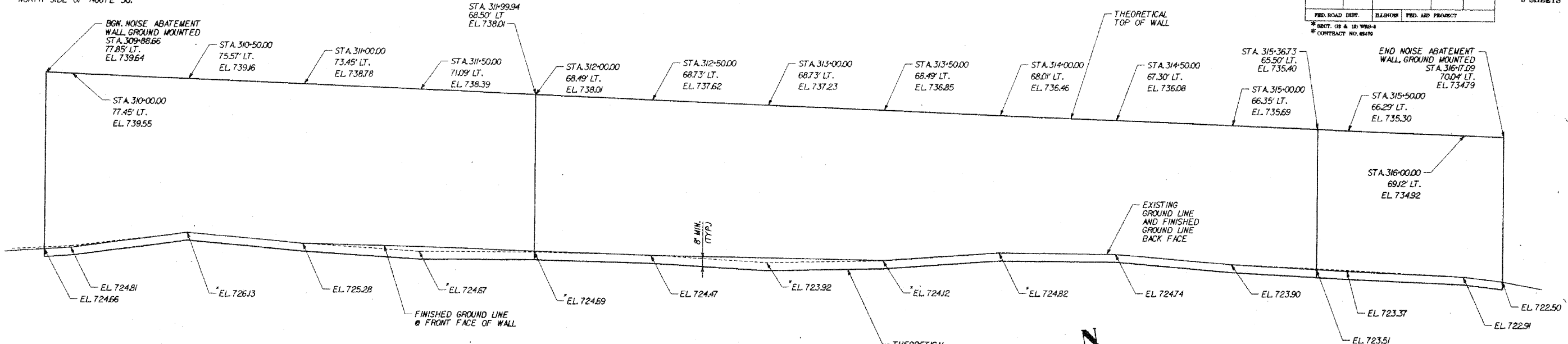


ROUTE NO.	SECTION	COUNTY	TOTAL SHEETS	SHEET NO.
FAP 353	*	WILL	1235	756
FED. ROAD DIST.		ILLINOIS	FED. AID PROJECT	
* SHEET 12 & 13 WRS-3		* CONTRACT NO. 05479		

BENCH MARK: BM 231  
STA. 317+94.643, 56.838' LT., ELEV. 720.96  
SET SQUARE ON CURB IN FRONT OF FRANKFORT TWP BUILDING,  
NORTH SIDE OF ROUTE 30.



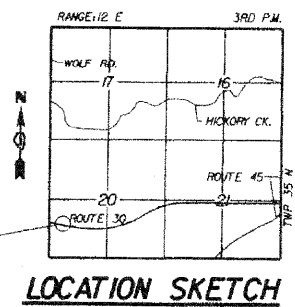
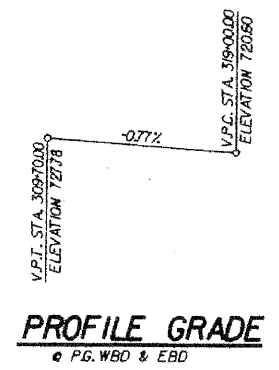
NOTE:  
STATIONS & OFFSETS ARE FROM E US 30 TO FRONT FACE OF WALL

**TOTAL BILL OF MATERIALS**

ITEM	UNIT	QUANTITY
NOISE ABATEMENT WALL GROUND MOUNTED	SQ. FT.	8,389

**CURVE DATA**

PI STA. = 315+74.0  
 $\Delta$  = 11° 50' 47" (LT.)  
 D = 0' 32" 44"  
 R = 10,500.00'  
 T = 1089.38'  
 L = 2170.98'  
 E = 56.36'  
 P.C. STA. = 304+84.72  
 P.T. STA. = 326+55.71



**DESIGN SPECIFICATIONS**  
AASHTO 2002 SPECIFICATIONS

DESIGNED	ASP
CHECKED	WSP
DRAWN	BGC
CHECKED	WSP



Wayne A. Trapp  
11-30-10

**DLZ** 85 W. Algonquin Rd. Ste. 220  
Arlington Heights IL 60005

**NOISE WALL D**  
**PLAN & ELEVATION**  
U.S. ROUTE 30 (LINCOLN HIGHWAY)  
F.A.P. 353 (U.S. 30)  
SECTION (12 & 13) WRS-3  
STATION 309+88.63 TO 316+17.14  
WILL COUNTY

**REVISIONS**

NAME	DATE