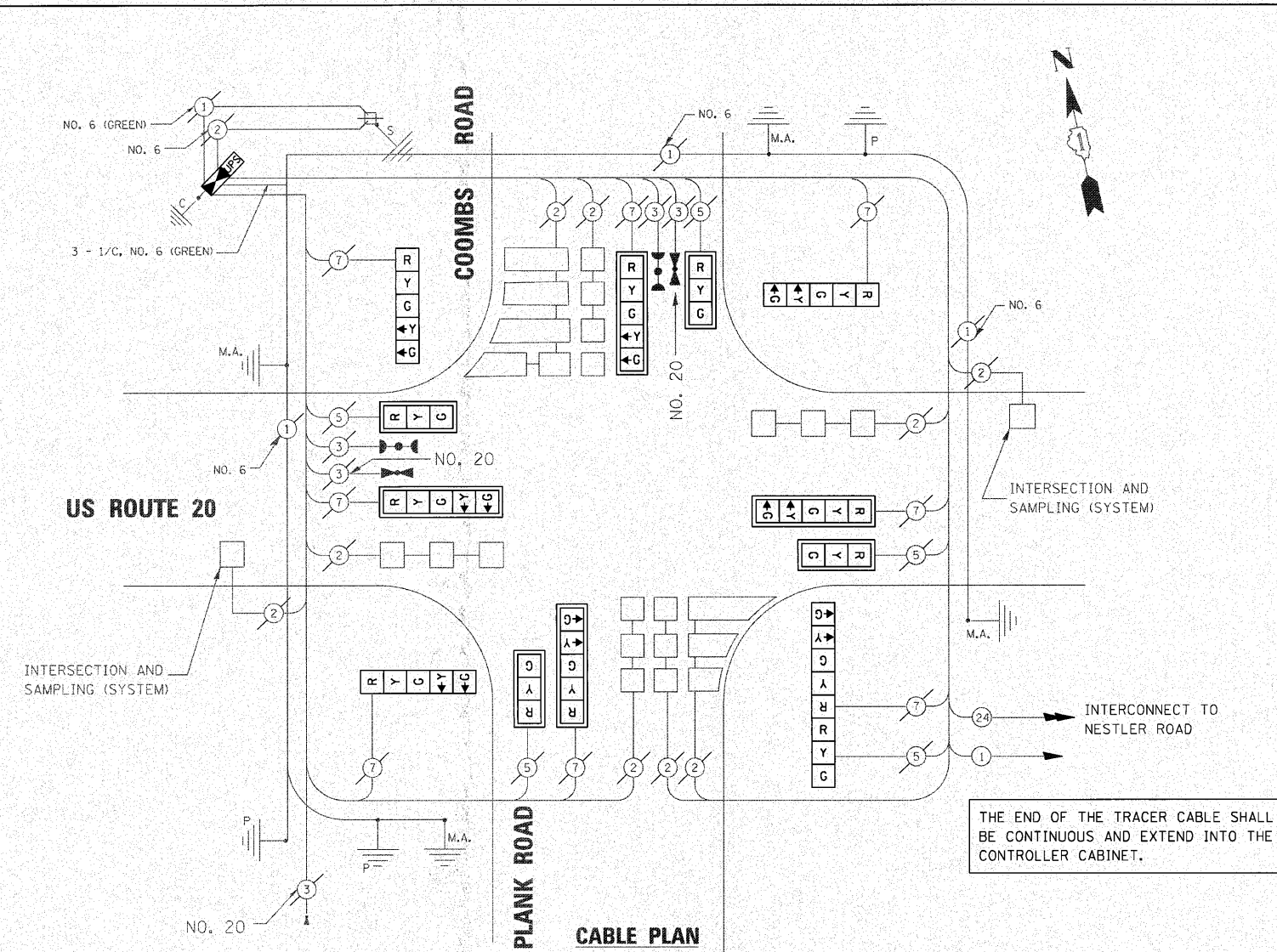


FILE NAME = P:\2009\ME09006-Var\PH1\CADD\W05\_US20\Shs\0162529-sh1-TS01-Plan.dgn  
 PLOT SCALE = 28.0000 / IN.  
 USER NAME = Millennium Professional Services



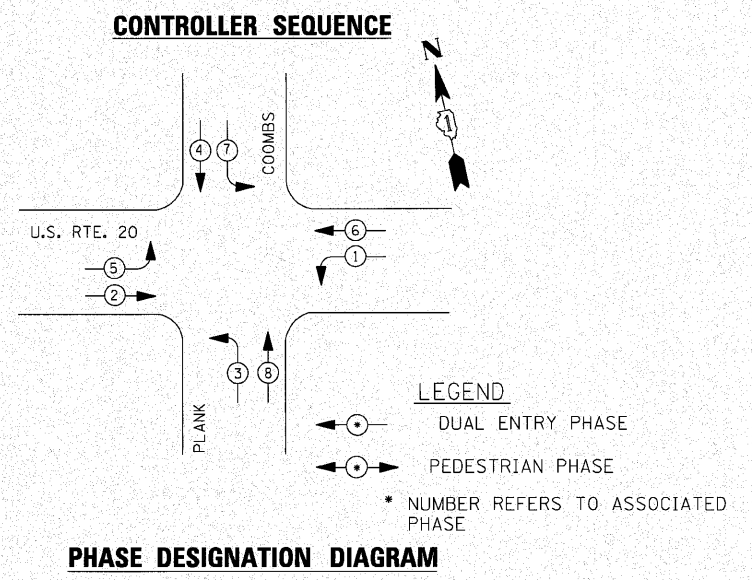
**SCHEDULE OF QUANTITIES**

- 1 EACH TRANSCEIVER - FIBER OPTIC
- 4 EACH SIGNAL HEAD, LED, 1-FACE, 3-SECTION, MAST-ARM MOUNTED
- 3 EACH SIGNAL HEAD, LED, 1-FACE, 5-SECTION, BRACKET MOUNTED
- 4 EACH SIGNAL HEAD, LED, 1-FACE, 5-SECTION, MAST-ARM MOUNTED
- 1 EACH SIGNAL HEAD, LED, 2-FACE, 1-3 SECTION, 1-5 SECTION, BRACKET MOUNTED
- 12 EACH REMOVE EXISTING SIGNAL HEAD
- 1 EACH CONTROLLER (SPECIAL)

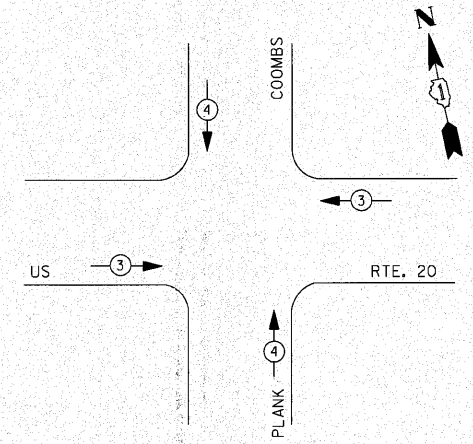
THE TRAFFIC SIGNAL CONTROL EQUIPMENT FOR THIS SYSTEM SHALL BE "EAGLE" TO MATCH THE EXISTING ADJACENT SYSTEM.

THE END OF THE TRACER CABLE SHALL BE CONTINUOUS AND EXTEND INTO THE CONTROLLER CABINET.


I.D.O.T TRAFFIC SIGNAL INSTALLATION ELECTRICAL SERVICE REQUIREMENTS						TOTAL WATTAGE
TYPE	NO. LAMPS	WATTAGE		% OPERATION		
		INCAND.	LED			
SIGNAL (RED)	12	135	17	0.50	102.0	
(YELLOW)	12	135	25	0.25	75.0	
(GREEN)	12	135	15	0.25	45.0	
ARROW	16	135	12	0.10	19.2	
PED. SIGNAL		90	25	1.00		
CONTROLLER	1	100	100	1.00	100.0	
ILLUM. SIGN		84		0.05	--	
FLASHER				0.50	--	
TOTAL =					341.2	



**EMERGENCY VEHICLE PREEMPTION SEQUENCE**



PROPOSED EMERGENCY VEHICLE PREEMPTORS		
EMERGENCY VEHICLE PREEMPTOR	3	4
MOVEMENT	← →	↑


**MILLENNIA PROFESSIONAL SERVICES**  
 200 22ND Street, Suite 216, Lombard, IL 60148  
 630.705.0110 voice, 630.839.2566 fax  
 WWW.MPS-IL.COM

DESIGNED - TVN	REVISED -
DRAWN - TVN	REVISED -
CHECKED - RPD	REVISED -
DATE - 4/9/2010	REVISED -

STATE OF ILLINOIS  
DEPARTMENT OF TRANSPORTATION

**CABLE PLAN, PHASE DESIGNATION DIAGRAM,  
SCHEDULE OF QUANTITIES  
US 20 AT PLANK / COOMBS ROAD**  
 SCALE: SHEET NO. OF SHEETS STA. TO STA.

F.A.P. RTE.	SECTION	COUNTY	TOTAL SHEETS	SHEET NO.
345	BWRS-2	KANE	72	39
FED. ROAD DIST. NO. 1 ILLINOIS FED. AID PROJECT			CONTRACT NO. 62529	

P:\2009\ME09006-Var\PH1\CADD\W05\_US20\Shs\0162529-sh1-TS01-Plan.dgn