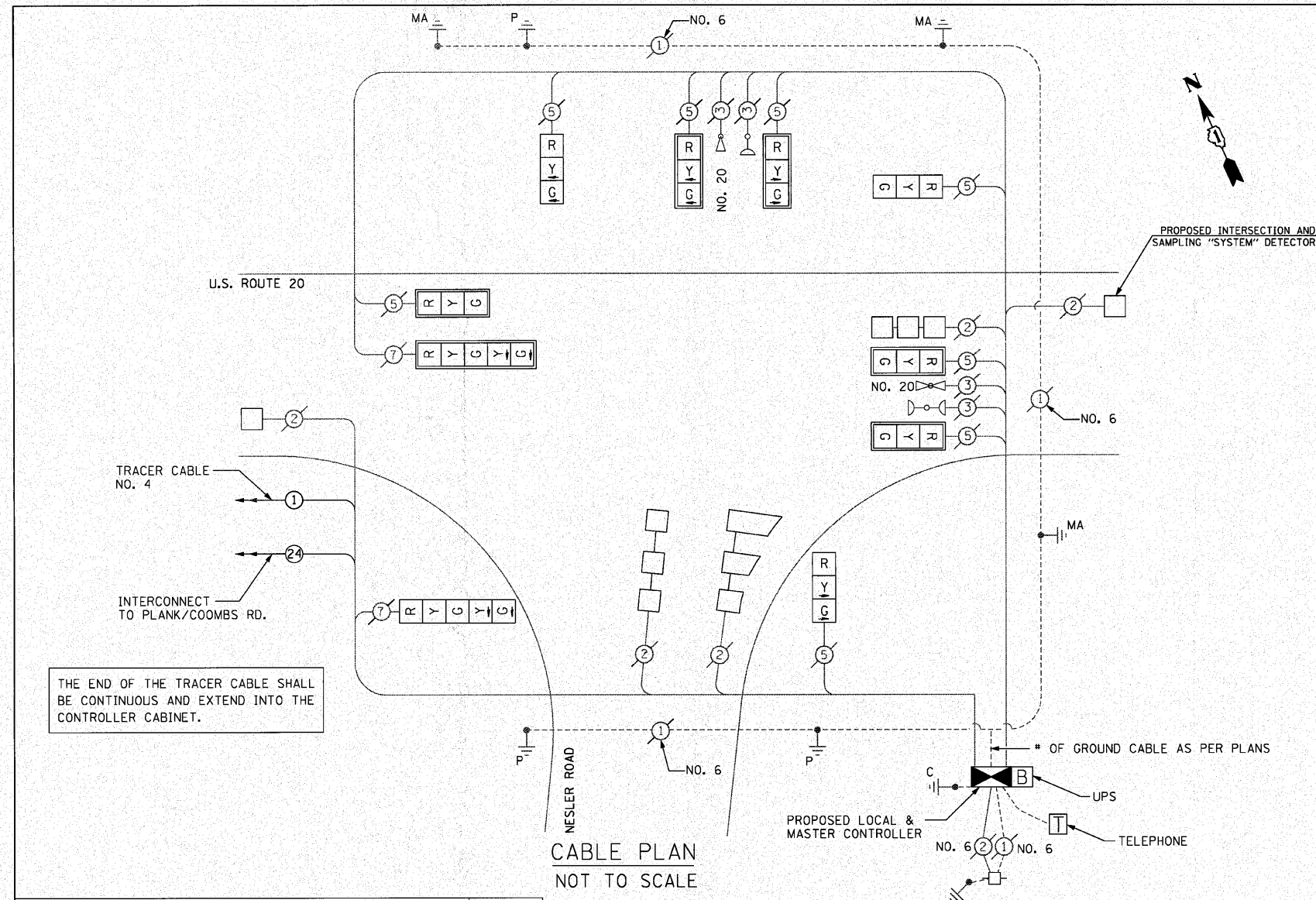


SCHEDULE OF QUANTITIES

| ITEM | UNIT | QTY |
|---|------|-----|
| TRANSCIVER- FIBEROPTIC | EACH | 1 |
| FULL-ACTUATED CONTROLLER AND TYPE V CABINET, SPECIAL | EACH | 1 |
| SIGNAL HEAD, LED, 1-FACE, 3-SECTION, MAST-ARM MOUNTED | EACH | 5 |
| SIGNAL HEAD, LED, 1-FACE, 3-SECTION, BRACKET MOUNTED | EACH | 3 |
| SIGNAL HEAD, LED, 1-FACE, 5-SECTION, BRACKET MOUNTED | EACH | 1 |
| SIGNAL HEAD, LED, 1-FACE, 5-SECTION, MAST-ARM MOUNTED | EACH | 1 |
| DETECTOR LOOP REPLACEMENT | FOOT | 376 |
| INDUCTIVE LOOP DETECTOR | EACH | 5 |
| RELOCATE EXISTING EMERGENCY VEHICLE PRIORITY SYSTEM, PHASING UNIT | EACH | 1 |
| REMOVE EXISTING SIGNAL HEAD | EACH | 10 |



CABLE PLAN
NOT TO SCALE

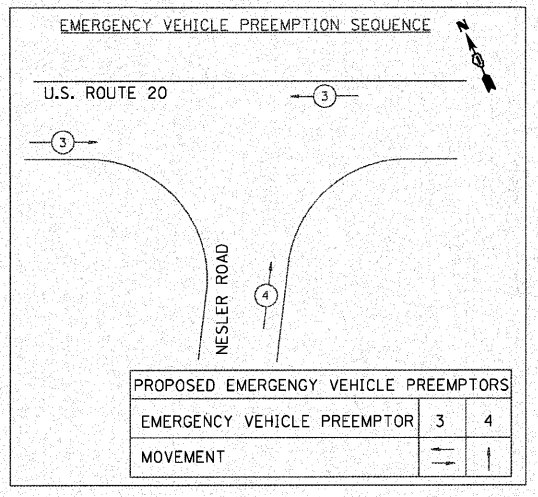
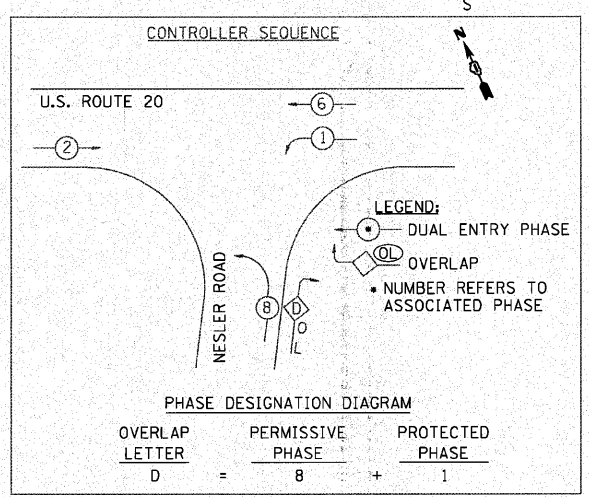
THE TRAFFIC SIGNAL CONTROL EQUIPMENT FOR THIS SYSTEM SHALL BE "EAGLE" TO MATCH THE EXISTING ADJACENT SYSTEM.

I.D.O.T.
TRAFFIC SIGNAL INSTALLATION
ELECTRICAL SERVICE REQUIREMENTS

| TYPE | NO. OF LAMPS | WATTAGE | | % OPERATION | TOTAL WATTAGE |
|--------------|--------------|-----------|-------|-------------|---------------|
| | | X INCAND. | LED X | | |
| SIGNAL (RED) | 10 | 135 | 17 | 0.50 | 85 |
| (YELLOW) | 10 | 135 | 25 | 0.25 | 62.5 |
| (GREEN) | 10 | 135 | 15 | 0.25 | 37.5 |
| ARROW | 4 | 135 | 12 | 0.10 | 4.8 |
| PED. SIGNAL | - | 135 | 12 | 0.19 | - |
| CONTROLLER | 1 | 100 | 100 | 1.00 | 100 |
| ILLUM. SIGN | - | 84 | - | 0.05 | - |
| FLASHER | - | - | - | 0.50 | - |
| TOTAL | | | | | 289.8 |

ENERGY COSTS TO:
ILLINOIS DEPARTMENT OF TRANSPORTATION
201 WEST CENTER COURT
SCHAUMBURG, ILLINOIS 60196-1096
ENERGY SUPPLY: CONTACT: ROSE PECORARO
PHONE: (847) 608-2331
COMPANY: COMED

| FOUNDATION (DEPTH) | (FT.) | CABLE SLACK | (FT.) | VERTICAL | (FT.) |
|--------------------|-------|------------------|-------|-------------------|------------|
| TYPE A - POST | 4 | HANDHOLE | 6.5 | ALL FOUNDATIONS | 3.5 |
| D - CONTROLLER | 4 | DOUBLE HANDHOLE | 13 | MAST ARM (L) POLE | 20'+ L-2 = |
| E - M. ARM POLE | | SIGNAL POST | 2 | BRACKET MOUNTED | 13 |
| 24" | 10 | CONTROLLER CAB. | 1 | PED. PUSHBUTTON | 4 |
| 30" | 15 | FIBER OPTIC | 13 | ELECTRIC SERVICE | 13.5 |
| 36" | 15 | ELECTRIC SERVICE | 1 | SERVICE TO GROUND | 13.5 |
| | | GROUND CABLE | 1 | POST MOUNTED | 6 |



FILE NAME: P:\2009\ME\0906_Ver-Vor_Phil\CADD\W05_US20\Shs\0162529-ah-1502-2Nessler-CBL.dgn
 PLOT SCALE: 1/8"=1'-0"
 USER NAME: Millennium Professional Services

200 22ND Street, Suite 216, Lombard, IL 60148
630.705.0110 voice, 630.839.2566 fax
WWW.MPS-IL.COM

| | | | |
|----------|----------|---------|---|
| DESIGNED | TVN | REVISED | - |
| DRAWN | TVN | REVISED | - |
| CHECKED | RPD | REVISED | - |
| DATE | 4/9/2010 | REVISED | - |

**STATE OF ILLINOIS
DEPARTMENT OF TRANSPORTATION**

**CABLE PLAN, PHASE DESIGNATION DIAGRAM,
SCHEDULE OF QUANTITIES
US 20 AT NESSLER ROAD**

SCALE: SHEET NO. OF SHEETS STA. TO STA.

| | | | | |
|---|---------|--------|--------------------|-----------|
| F.A.P. RTE. | SECTION | COUNTY | TOTAL SHEETS | SHEET NO. |
| 345 | 8WRS-2 | KANE | 72 | 41 |
| FED. ROAD DIST. NO. 1 ILLINOIS FED. AID PROJECT | | | CONTRACT NO. 62529 | |

P:\2009\ME\0906_Ver-Vor_Phil\CADD\W05_US20\Shs\0162529-ah-1502-2Nessler-CBL.dgn