

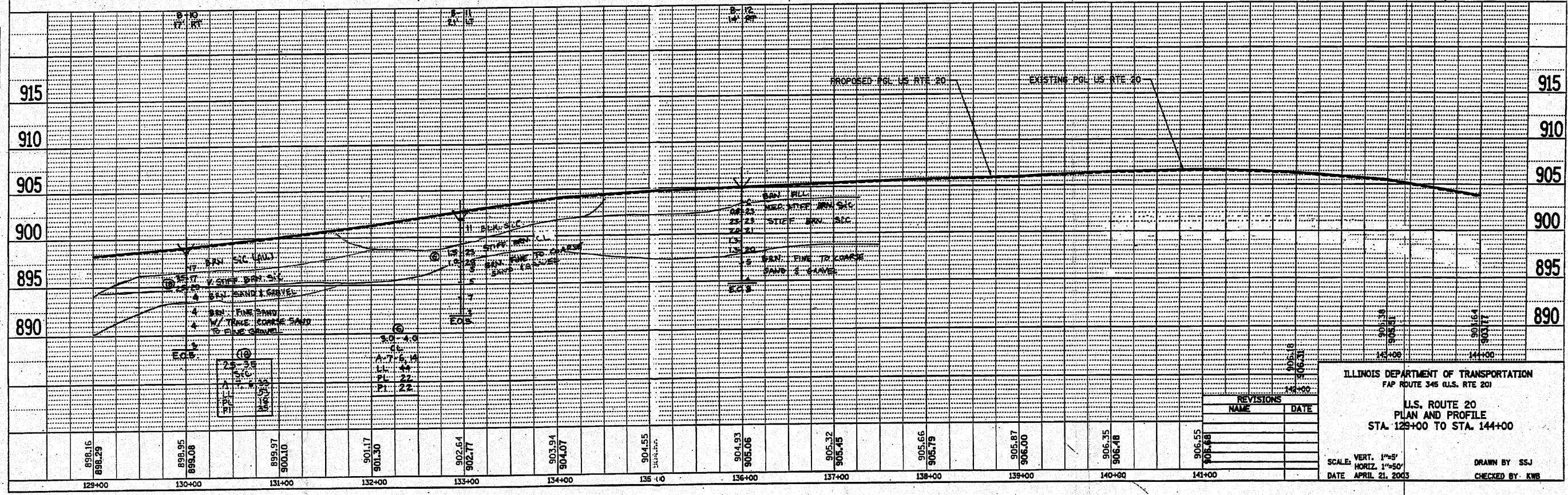
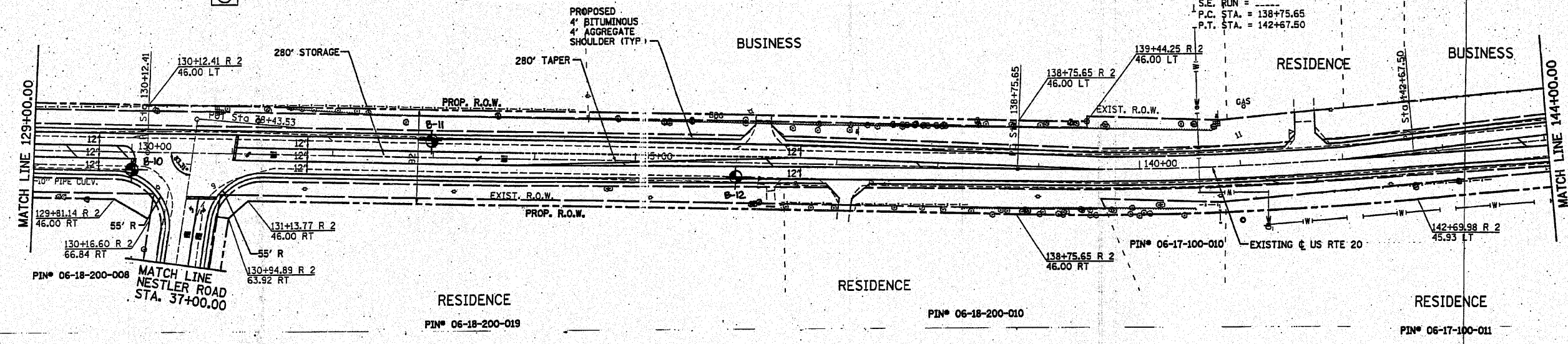
DATE	
BY	
REVISIONS	
NO.	
DATE	
BY	
REVISIONS	
NO.	
DATE	
BY	
REVISIONS	
NO.	

DATE	
BY	
REVISIONS	
NO.	
DATE	
BY	
REVISIONS	
NO.	
DATE	
BY	
REVISIONS	
NO.	

FOR INFORMATION ONLY

RTE	SECTION	COUNTY	SHEETS	SHEET NO.
345	8WRS-2	KANE	72	47
STA. 129+00.00		TO STA. 144+00.00		
FED. ROAD DIST. NO.		ILLINOIS FED. AID PROJECT		

EXIST. CURVE 12
 PI STA. = 140+71.82
 $\Delta = 7^{\circ} 00' 49''$ (LT)
 $D = 1^{\circ} 47' 23''$
 $R = 3,201.15'$
 $T = 196.17'$
 $L = 391.85'$
 $E = 6.01'$
 $e = \text{---}$
 T.R. = ---
 S.E. RUN = ---
 P.C. STA. = 138+75.65
 P.T. STA. = 142+67.50



REVISIONS	
NAME	DATE

ILLINOIS DEPARTMENT OF TRANSPORTATION
 FAP ROUTE 345 (U.S. RTE 20)
 U.S. ROUTE 20
 PLAN AND PROFILE
 STA. 129+00 TO STA. 144+00
 SCALE: VERT. 1"=5'
 HORIZ. 1"=50'
 DATE APRIL 21, 2003
 DRAWN BY SSJ
 CHECKED BY KWB