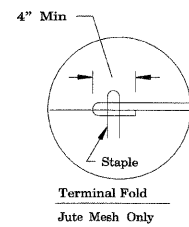
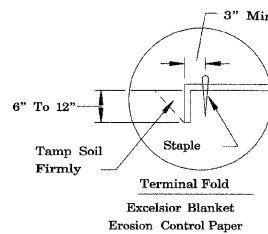


A:\001\10201\001.DSN  
 10-25-2010, 17:55:10  
 ROSSPF  
 \\FS-0044\AM\VOL1.D\TRANS\_07\_2202\20745-001\CIVIL\CAD\01 DESIGN\1A TENG SHEET\ED01A282.SHT

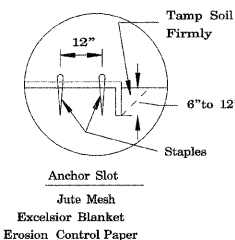


Terminal Fold  
Jute Mesh Only



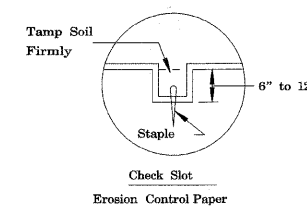
Terminal Fold  
Excelsior Blanket  
Erosion Control Paper

DETAIL 1



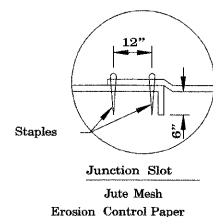
Anchor Slot  
Jute Mesh  
Excelsior Blanket  
Erosion Control Paper

DETAIL 3

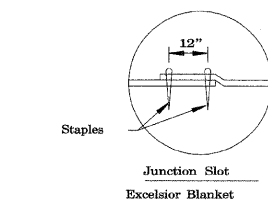


Check Slot  
Erosion Control Paper

DETAIL 4

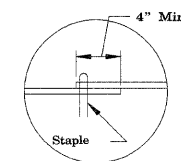


Junction Slot  
Jute Mesh  
Erosion Control Paper



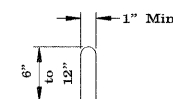
Junction Slot  
Excelsior Blanket

DETAIL 2



Lap Joint  
Erosion Control Paper  
Excelsior Blanket Shall  
Be Butted Together.

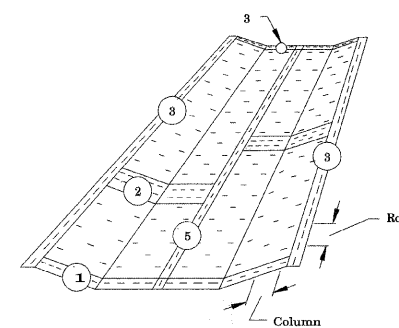
DETAIL 5



STAPLE DETAIL

**DETAIL NOTES:**

- ON EROSION CONTROL PAPER, CHECK SLOTS, IN DITCH CHANNEL SHALL BE SPACED SO THAT ONE OCCURS WITHIN EACH 50' ON SLOPES OF MORE THAN 4% AND LESS THAN 6%. ON SLOPES OF 6% OR MORE THEY SHALL BE SPACED SO THAT ONE OCCURS WITHIN EACH 25'.
- STAPLES ARE TO BE PLACED ALTERNATIVELY, IN COLUMNS APPROXIMATELY 2' APART AND IN ROWS APPROXIMATELY 8' APART. APPROXIMATELY 175 STAPLES ARE REQUIRED PER 4'x225' ROLL OF MATERIAL AND 125 STAPLES ARE REQUIRED PER 4'x150' ROLL OF MATERIAL.
- EROSION CONTROL MATERIAL SHALL BE PLACED LOOSELY OVER GROUND SURFACE.
- ALL TERMINAL ENDS AND TRANSVERSE LAPS SHALL BE STAPLED AT APPROXIMATELY 12" INTERVALS.



**EROSION CONTROL BLANKET**

|   |                        |                |           |  |  |  |                |        |              |           |
|---|------------------------|----------------|-----------|--|--|--|----------------|--------|--------------|-----------|
| FILE NAME =<br>\$FILEL\$  | USER NAME = \$USER\$   | DESIGNED - KPS | REVISED - | <b>STATE OF ILLINOIS</b><br><b>DEPARTMENT OF TRANSPORTATION</b><br>GREEN GARDEN TOWNSHIP<br>88TH AVENUE (PEOTONE ROAD) | <b>EROSION &amp; SEDIMENT CONTROL DETAILS</b><br><b>(2 OF 2)</b> | F.A. RTE.  | SECTION        | COUNTY | TOTAL SHEETS | SHEET NO. |
|   | PLOT SCALE = \$SCALE\$ | DRAWN - PFR    | REVISED - |  |  | N/A  | 03-07118-00-BR | WILL   | 43           | 13        |
| <b>TENG</b> TENG & ASSOCIATES, INC.<br>ENGINEERS/ARCHITECTS/PLANNERS<br>CHICAGO, ILLINOIS | PLOT DATE = 10-25-2010 | CHECKED - TKL  | REVISED - | SCALE: N.T.S.  |  | FED. ROAD DIST. NO. ILLINOIS FED. AID PROJECT<br><b>CONTRACT NO. 63156</b> |                |        |              |           |
|   | DATE - 10/27/10        | REVISED -      |           |  |  |  |                |        |              |           |