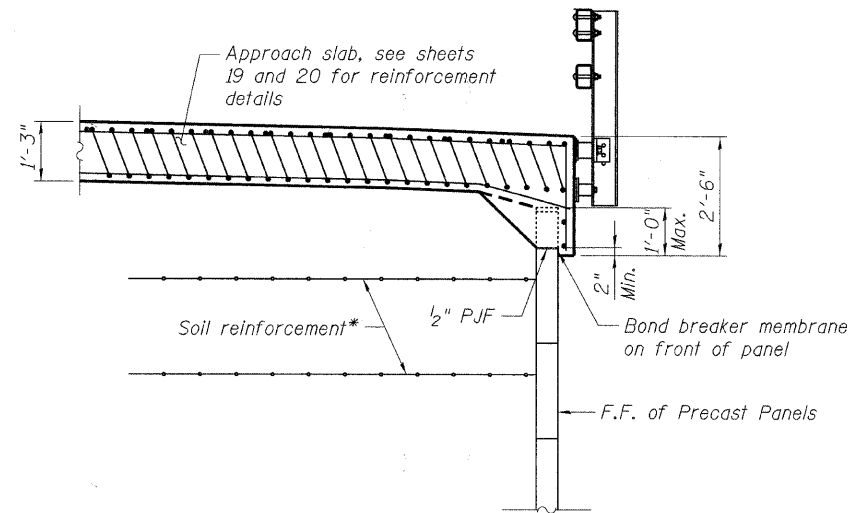
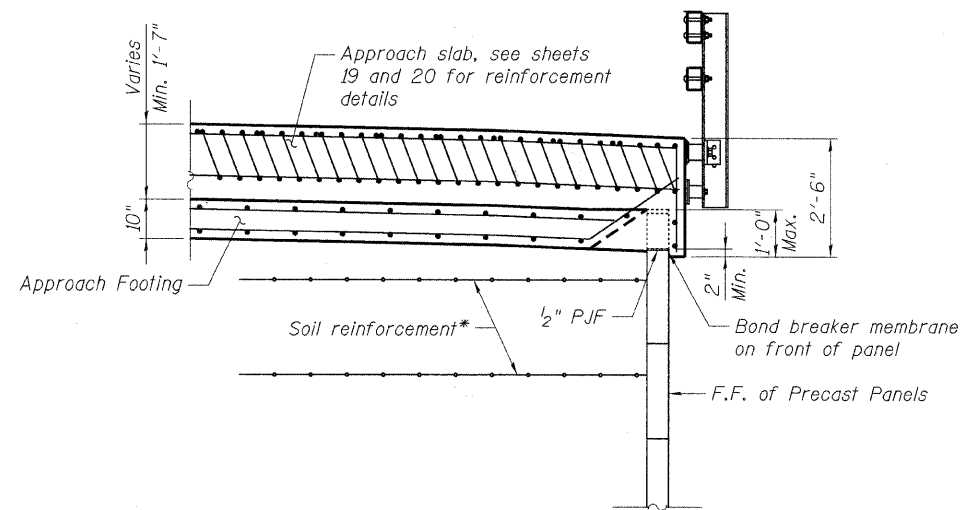


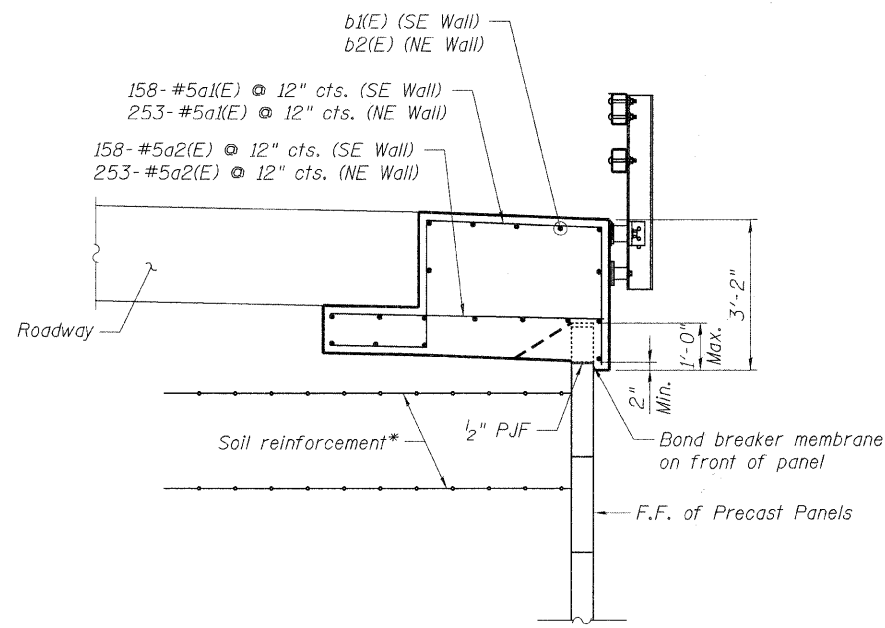
**TYPICAL WALL SECTION**  
(Looking Upstation)



**SECTION THRU APPROACH SLAB - NEAR ABUTMENT**



**SECTION THRU APPROACH SLAB - AT APPROACH FOOTING**



**SECTION THRU ANCHORAGE SLAB - ROADWAY**

\* MSE wall supplier's internal design shall account for the anchorage slab's bearing pressure surcharge of 1.3 ksf and horizontal sliding force of 0.5 kips/ft. of wall.

**NOTE:**  
Work this sheet with sheets 20, 21, 23, 25, 26 & 28.

\\FS-0844\AN\VALI.TD\TRANS\_07\2202\20745\081\STRUCT\CAD\01\_DESIGN\TENSHEET\0801A203.SHT  
 10-26-2010 15:55:23  
 TENG & ASSOCIATES, INC.  
 ENGINEERS/ARCHITECTS/PLANNERS  
 CHICAGO, ILLINOIS

FILE NAME =	USER NAME = #USER#	DESIGNED - KK	REVISED -	<b>STATE OF ILLINOIS</b> <b>DEPARTMENT OF TRANSPORTATION</b> GREEN GARDEN TOWNSHIP 88TH AVENUE (PEOTONE ROAD)	<b>MSE WALL DETAILS - I</b>	F.A. RTE.	SECTION	COUNTY	TOTAL SHEETS	SHEET NO.	
#FILE#		DRAWN - KK	REVISED -			N/A	03-07118-00-BR	WILL	43	27	
PLOT SCALE = #SCALE#		CHECKED - KPS	REVISED -			CONTRACT NO. 63156					
PLOT DATE = 10-26-2010		DATE - 10/27/10	REVISED -			FED. ROAD DIST. NO. [ILLINOIS] FED. AID PROJECT					