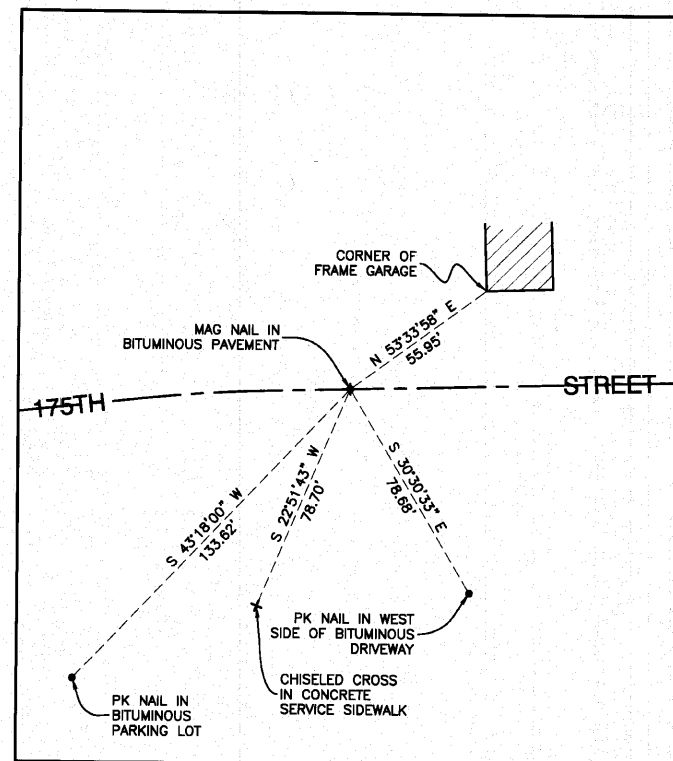
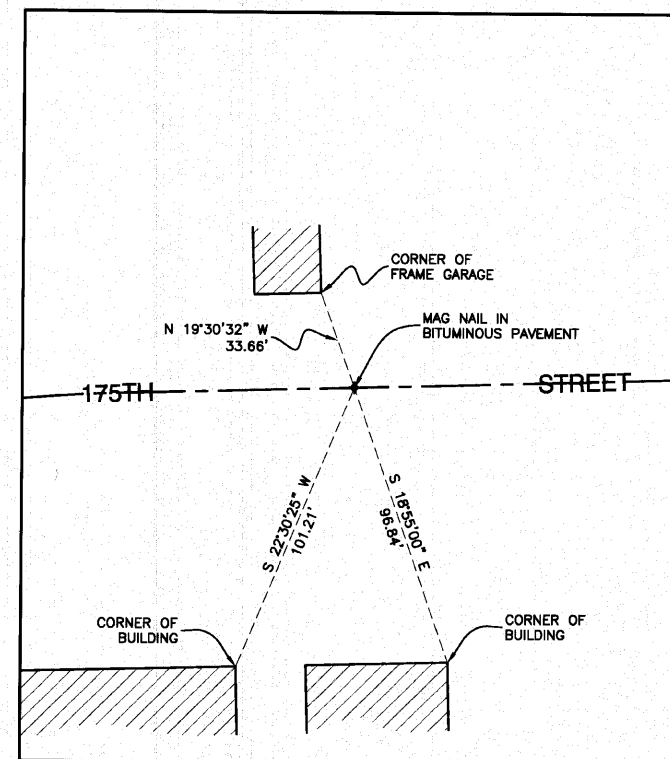


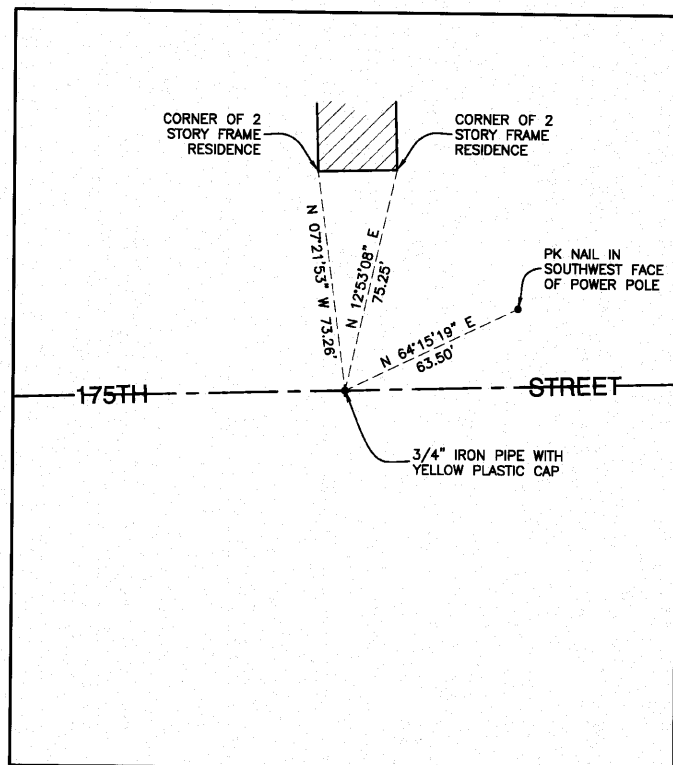
#151 P.T. STATION 61+91.40 175TH STREET  
NORTH=1787521.2907 EAST=1132574.4938



#152 P.O.T. STATION 62+21.59 175TH STREET  
NORTH=1787522.1448 EAST=1132604.6687



#153 P.O.T. STATION 63+00.00 175TH STREET  
NORTH=1787524.3634 EAST=1132683.0473



#154 P.O.T. STATION 65+00.00 175TH STREET  
NORTH=1787530.0222 EAST=1132882.9672

**NOTE:**

Coordinate values indicated hereon are based upon the North American Datum of 1983 adjustment of 2007 (N.A.D. '83 (2007)). The coordinate values are Illinois State Plane Eastern Zone estimated GROUND coordinates utilizing an average location for the length of the project having the following parameters:

WGS '84 North Latitude = 41°34'32.76869"  
WGS '84 West Longitude = 87°46'56.40390"  
WGS '84 Height = 590.647 U.S. Feet

Utilization of these parameters should yield a ground scale factor of 1.0000272094.

Bearings indicated hereon are referenced to the North American Datum of 1983 adjustment of 2007 (N.A.D. '83 (2007)) Illinois State Plane Eastern Zone



FILE NAME = 08508-ALGN-02 Alignment & Ties - TIE 04	USER NAME =	DESIGNED =	REVISED =
	PLOT SCALE = Not To Scale	CHECKED -- REG, KWM	REVISED --
	PLOT DATE =	DRAWN -- REG, KWM	REVISED --
		CHECKED -- REG, KWM	REVISED --

STATE OF ILLINOIS  
DEPARTMENT OF TRANSPORTATION

175TH STREET AT HARLEM AVENUE  
INTERSECTION IMPROVEMENTS  
ALIGNMENT & TIES

SCALE: Not To Scale SHEET NO. 13 OF 60 SHEETS STA. TO STA.

F.A.P. RTE.	SECTION	COUNTY	TOTAL SHEETS	SHEET NO.
348	06-00104-00-CH	COOK	60	13
CONTRACT NO. 63453				
FED. ROAD DIST. NO. 1 ILLINOIS FED. AID PROJECT N.H.SIP-8003 (851)				