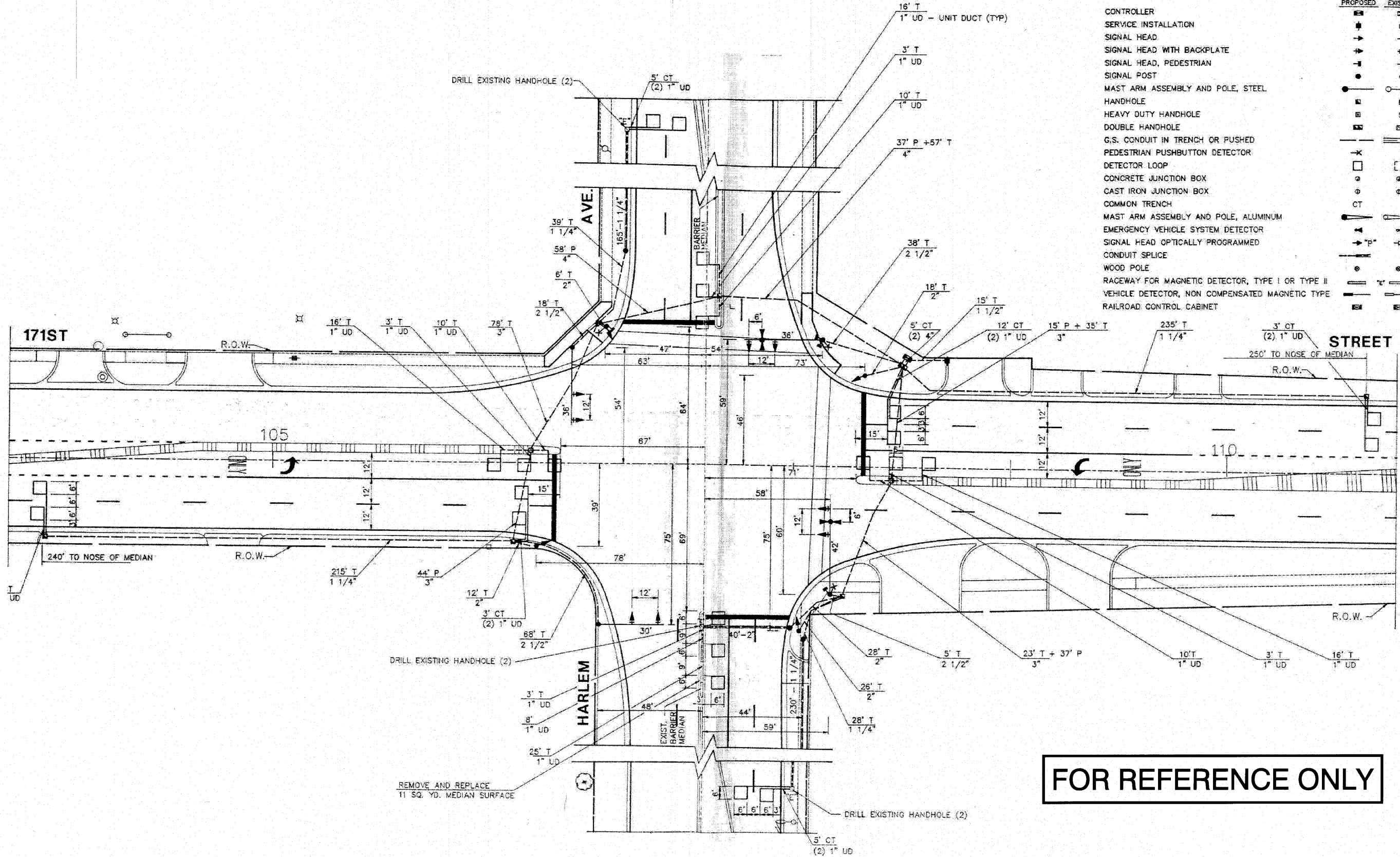


**LEGEND**

	PROPOSED	EXISTING
CONTROLLER		
SERVICE INSTALLATION		
SIGNAL HEAD		
SIGNAL HEAD WITH BACKPLATE		
SIGNAL HEAD, PEDESTRIAN		
SIGNAL POST		
MAST ARM ASSEMBLY AND POLE, STEEL		
HANDHOLE		
HEAVY DUTY HANDHOLE		
DOUBLE HANDHOLE		
G.S. CONDUIT IN TRENCH OR PUSHED		
PEDESTRIAN PUSHBUTTON DETECTOR		
DETECTOR LOOP		
CONCRETE JUNCTION BOX		
CAST IRON JUNCTION BOX		
COMMON TRENCH		
MAST ARM ASSEMBLY AND POLE, ALUMINUM		
EMERGENCY VEHICLE SYSTEM DETECTOR		
SIGNAL HEAD OPTICALLY PROGRAMMED		
CONDUIT SPLICE		
WOOD POLE		
RACEWAY FOR MAGNETIC DETECTOR, TYPE I OR TYPE II		
VEHICLE DETECTOR, NON COMPENSATED MAGNETIC TYPE		
RAILROAD CONTROL CABINET		



**FOR REFERENCE ONLY**

FILE NAME = 06508 SGNL 06 - P01	USER NAME =	DESIGNED -- WPD	REVISED --	<b>STATE OF ILLINOIS DEPARTMENT OF TRANSPORTATION</b>	TRAFFIC SIGNAL INSTALLATION 171ST STREET AND HARLEM AVENUE		F.A.P. RTE. 348	SECTION 06-00104-00-CH	COUNTY COOK	TOTAL SHEETS 80	SHEET NO. 42	
PLOT SCALE = 1=1	DRAWN -- AG	CHECKED -- WPD	REVISED --		SCALE: N/A	SHEET NO. 42 OF 80 SHEETS	STA. N/A	TO STA. N/A	CONTRACT NO. 63453			
PLOT DATE = 10-14-10	CHECKED -- AG	DRAWN -- AG	REVISED --		FED. ROAD DIST. NO. 1 ILLINOIS FED. AID PROJECT #HSIP-9003 (851)							

ASB DRAWN BY AG/LE/EN ON 4/16/10  
PLOT BY RICHARD QUINLAN ON 10/13/10